

For Sale or Lease Industrial Warehouse

46966 Mindy Street
Tea, SD 57064

Lease Rate Reduced!



List Price: \$650,000
Lease Rate: \$4.75/sq. ft.
Lease Type: Gross plus utilities

Building Information

Total Available Sq. Ft.: 5,160
Building Sq. Ft.: 14,500
Lot Size/Sq. Ft.: 51,430
Year Built: 2003
Type of Construction: Steel Frame
Roof: Metal
Floor: Concrete
Zoning: I-1
Real Estate Taxes: \$5,089.10

Property Highlights

- ◇ Multi-tenant industrial building in the Hagedorn Industrial Park east of Tea.
- ◇ 5,160 sq. ft. available.
- ◇ 3-phase power.
- ◇ 18' sidewalls.
- ◇ 5" concrete.
- ◇ 14' X 16 overhead doors
- ◇ Well appointed offices.
- ◇ Floor drains.
- ◇ Metal lined.
- ◇ Short distance to I-29.
- ◇ Located west of the Tea airport.

The information contained herein has been given to us by the owner of the property or other sources we deem reliable, we have no reason to doubt its accuracy, but we do not guarantee it. All information should be verified prior to purchase or lease.

Contact

Troy Fawcett, CCIM, SIOR

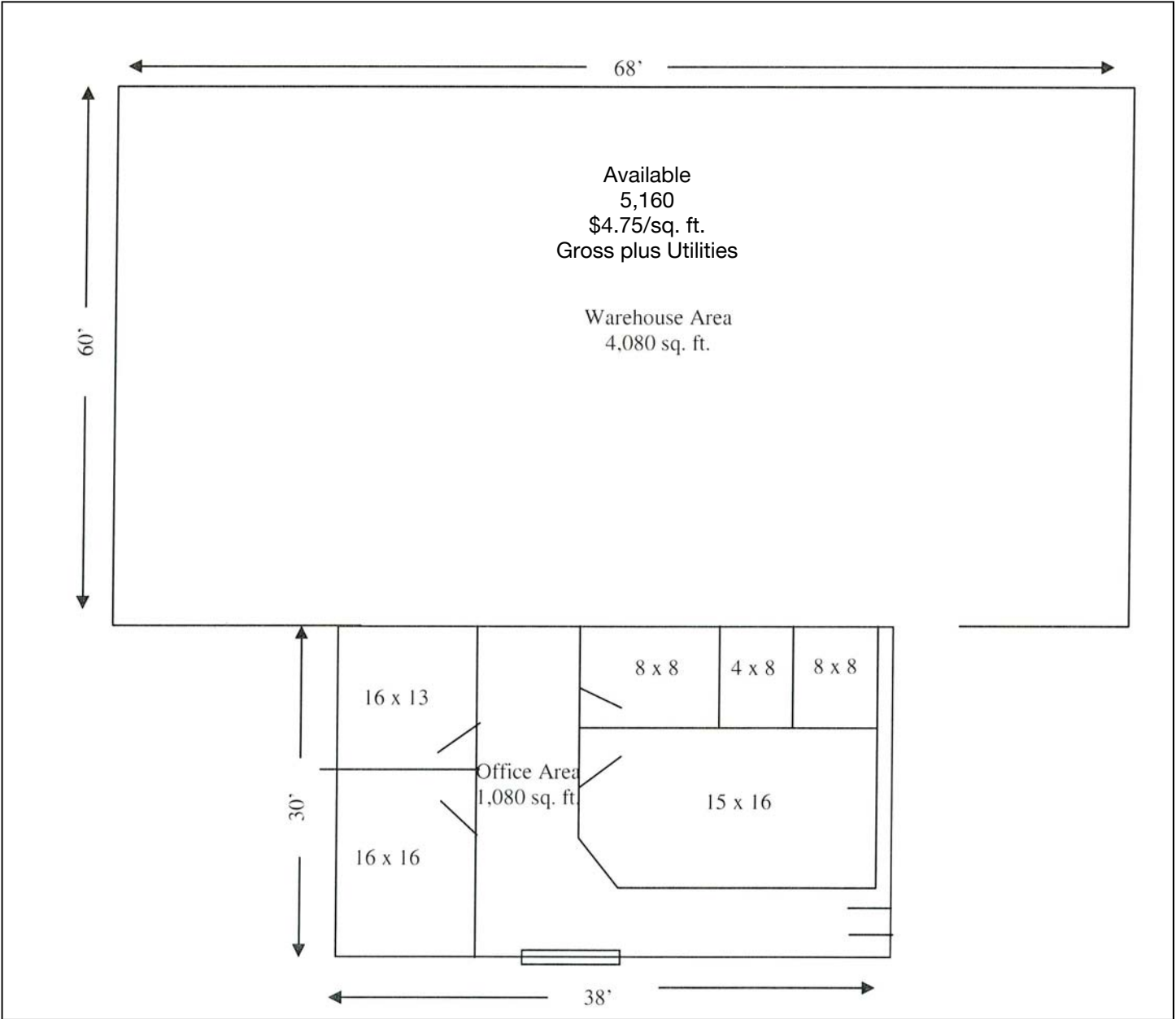
NAI Sioux Falls
101 N. Main Avenue, Suite 213
Sioux Falls, SD 57104
Direct: 605-444-7120
Cell: 605-321-2199
Fax: 605-357-7102
Email: tfawcett@naisiouxfalls.com
Web: www.siouxfallscommercial.com



NAI Sioux Falls

Commercial Real Estate Services, Worldwide.

Floor Plan



Aerial View



NAI Sioux Falls

Commercial Real Estate Services, Worldwide.