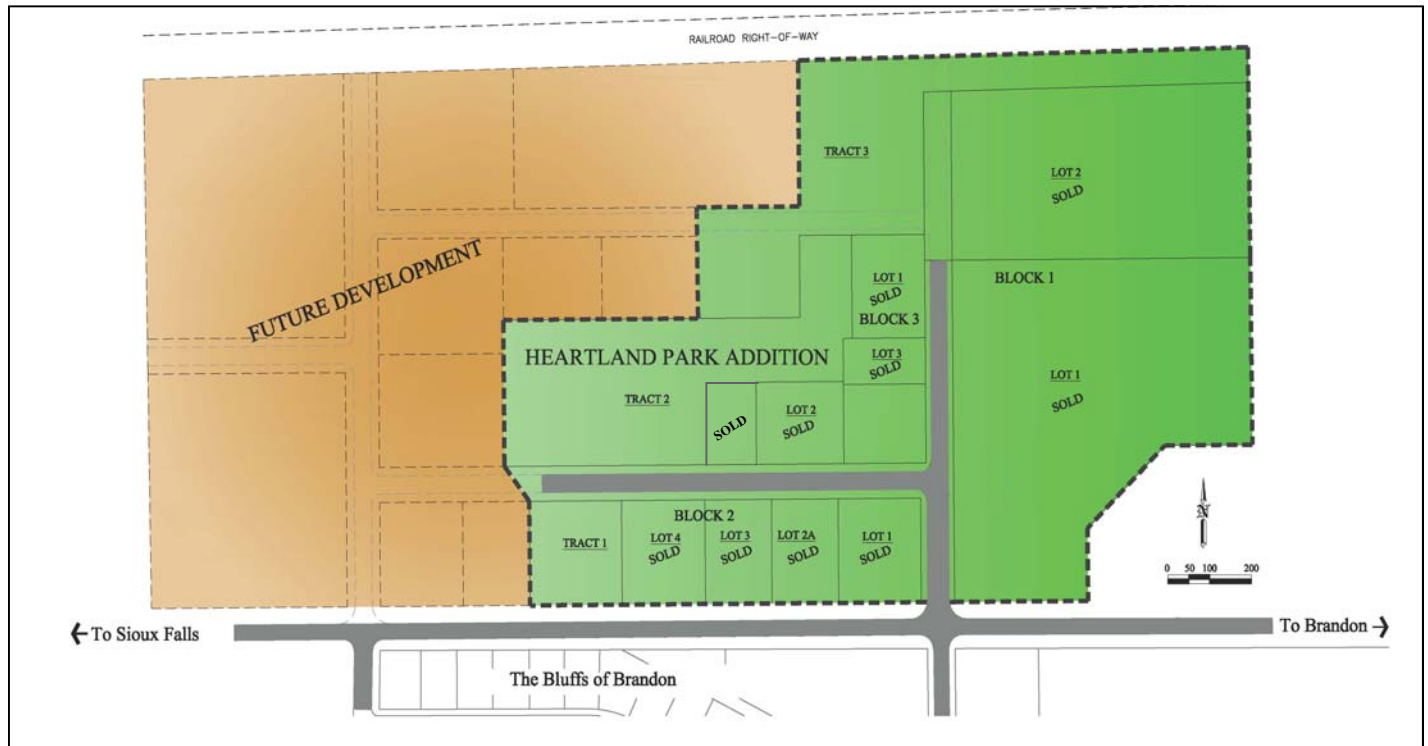


For Sale Commercial Land

Heartland Park
Brandon, SD 57005



List Price: \$1.75—\$5.00/sq. ft.

Land Size: 1/2 acres up to 45 acres available
Zoning: General Business
Terms: Cash or other acceptable terms
Real Estate Taxes: TBD

The information contained herein has been given to us by the owner of the property or other sources we deem reliable, we have no reason to doubt its accuracy, but we do not guarantee it. All information should be verified prior to purchase or lease.

Property Summary

- ◇ Very attractive business park with covenants in place.
- ◇ Flexible lot sizes available.
- ◇ Perfect for retail, office, light industrial & warehousing needs.
- ◇ Easy access to I-90 & I-229.
- ◇ Close proximity to Sioux Falls.
- ◇ All lots have Brandon city water & sewer, electric, natural gas and hard surface streets.
- ◇ Owners are South Dakota licensed real estate brokers.

Contact information

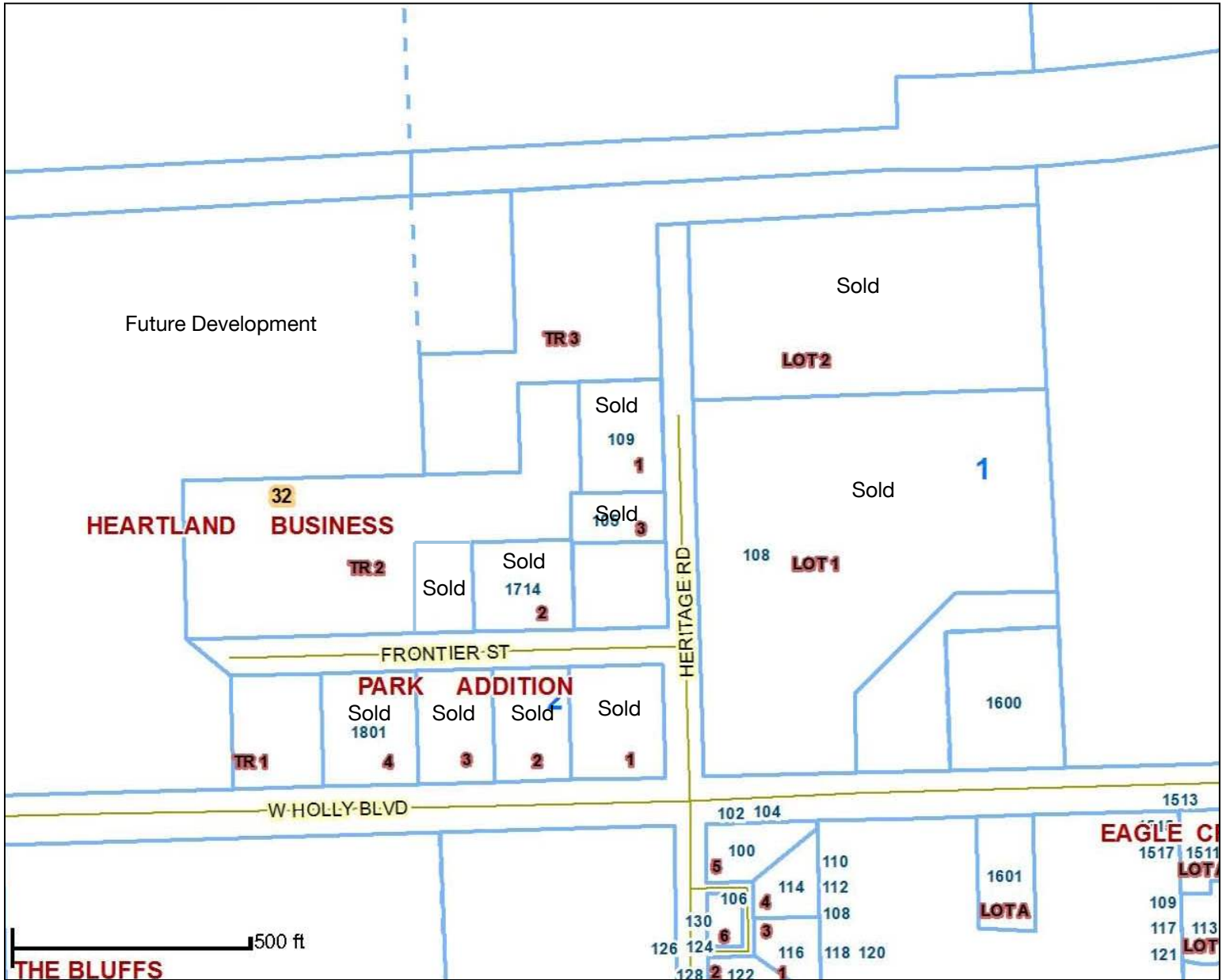
Tom Ode, Broker Associate
NAI Sioux Falls
101 N. Main Avenue, Suite 213
Sioux Falls, SD 57104
Direct: 605-357-7102
Cell: 605-376-6414
Fax: 605-357-7102
Email: tode@naisiouxfalls.com
Web: www.naisiouxfalls.com



NAI Sioux Falls

Commercial Real Estate Services, Worldwide.

Heartland Park Plat Map



Heartland Park Aerial View

