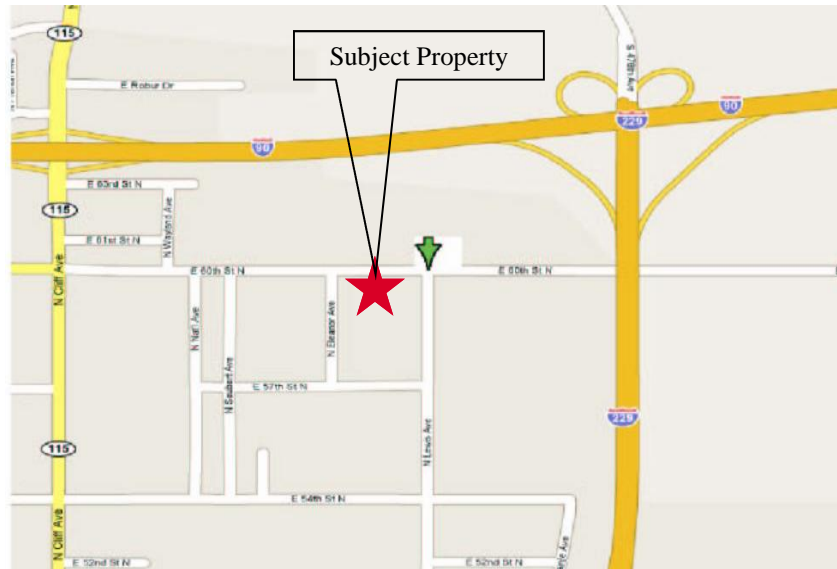
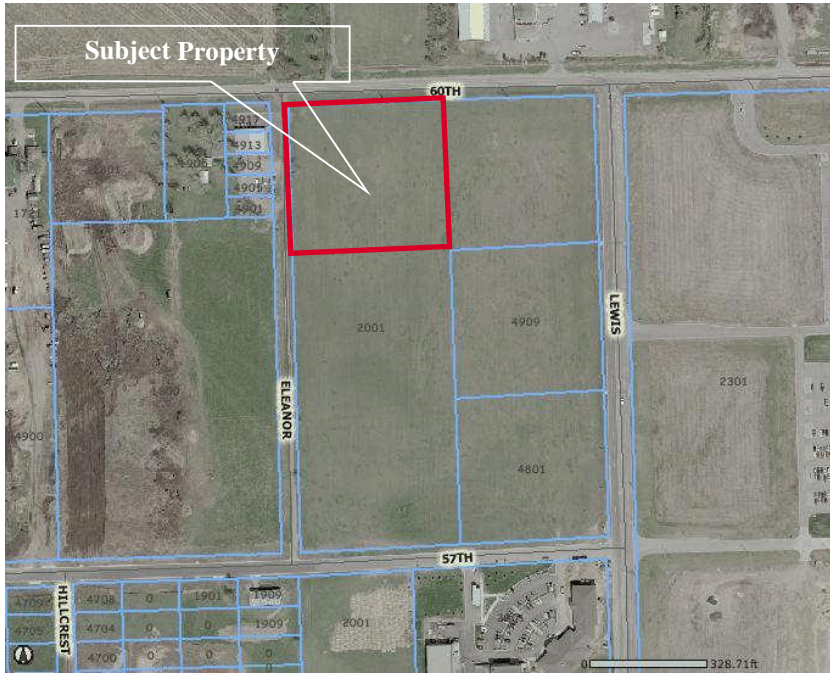


# Build-to-Suit For Lease

2001 E. 60th Street North  
Sioux Falls, SD 57104



Lease Rate: TBD

## Property Information

Total Land Size: 175,283 sq. ft.  
Dimensions: Irregular  
Zoning: I-1  
Legal Description: Lot 1, Block 2, Sioux Falls Development Park Five Addition

## Property Summary

- ◇ Development site at Park Five North entrance.
- ◇ Build-to-suit per tenant specifications.
- ◇ Neighbors include: O'Connor Company, Broin Enterprises, Hutchinson Technology, and JDS Industries.
- ◇ A member of the ownership entity is a South Dakota licensed real estate broker.



# NAI Sioux Falls

The information contained herein has been given to us by the owner of the property or other sources we deem reliable, we have no reason to doubt its accuracy, but we do not guarantee it. All information should be verified prior to purchase or lease.

## Contact information

**Troy Fawcett, CCIM, SIOR**

101 N. Main Avenue, Suite 213

NAI Sioux Falls Commercial

Direct: 605-444-7120

Fax: 605-357-7102

Cell: 605-321-2199

Email: [tfawcett@siouxfallscommercial.com](mailto:tfawcett@siouxfallscommercial.com)

Website: [www.siouxfallscommercial.com](http://www.siouxfallscommercial.com)

# Surveyed Plat

## SIoux EMPIRE DEVELOPMENT PARK FIVE ADDITION TO THE CITY OF SIoux FALLS, MINNEHaha COUNTY, SOUTH DAKOTA

