

Land For Sale
S. Popular Street
Lennox, SD 57039



NAI Sioux Falls

Commercial Real Estate Services, Worldwide.

List Price: \$116,130 (or \$2.50/sq. ft.)

Property Information

Land Size/sq. ft.: 46,452
Dimensions: Irregular
Zoning: Multi-family
Real Estate Taxes: \$814

Property Summary

- ◇ Vacant land located in Lennox.
- ◇ Ideal multi-family housing land.
- ◇ Single family use also permitted.
- ◇ One block east of Main Street.
- ◇ Two blocks from downtown businesses and three blocks from the city park.
- ◇ Within walking distance to the elementary, middle, and high school.
- ◇ Easy access to Hwy 17 & 44.
- ◇ Lennox is located approximately 20 miles southwest of Sioux Falls. A rural Lincoln County community of 2,741 residents, Lennox has a lot to offer including a grocery store, two banks, medical clinic, two dental clinics, lumber yard, auto dealership, assisted living/nursing home and much more.

The information contained herein has been given to us by the owner of the property or other sources we deem reliable, we have no reason to doubt its accuracy, but we do not guarantee it. All information should be verified prior

Contact information

Dan Tunge, Broker Associate

101 N. Main Avenue, Suite 213

NAI Sioux Falls

Direct: 605-359-4511

Fax: 605-357-7102

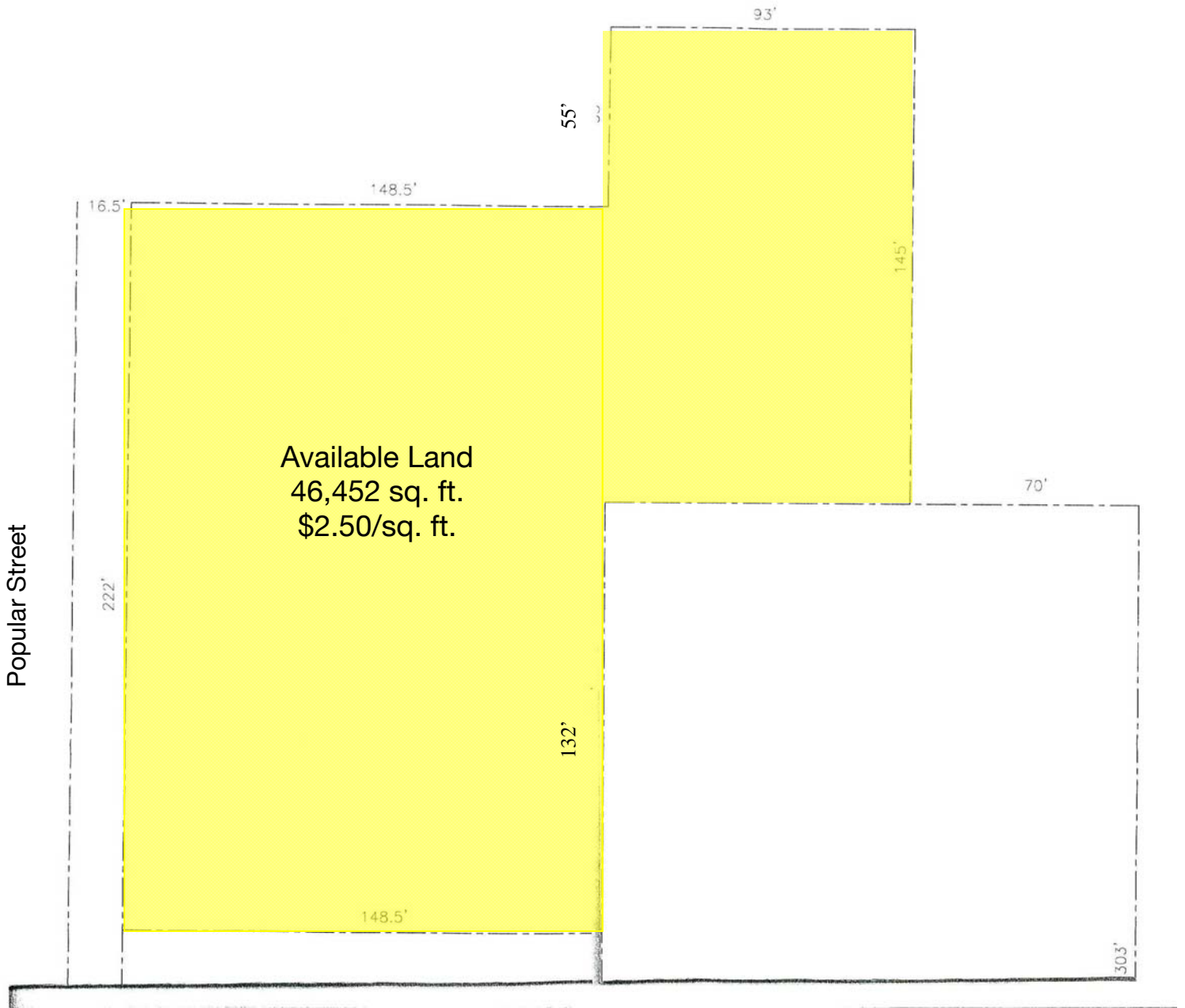
Cell: 605-359-4511

Email: dtunge@sio.midco.net

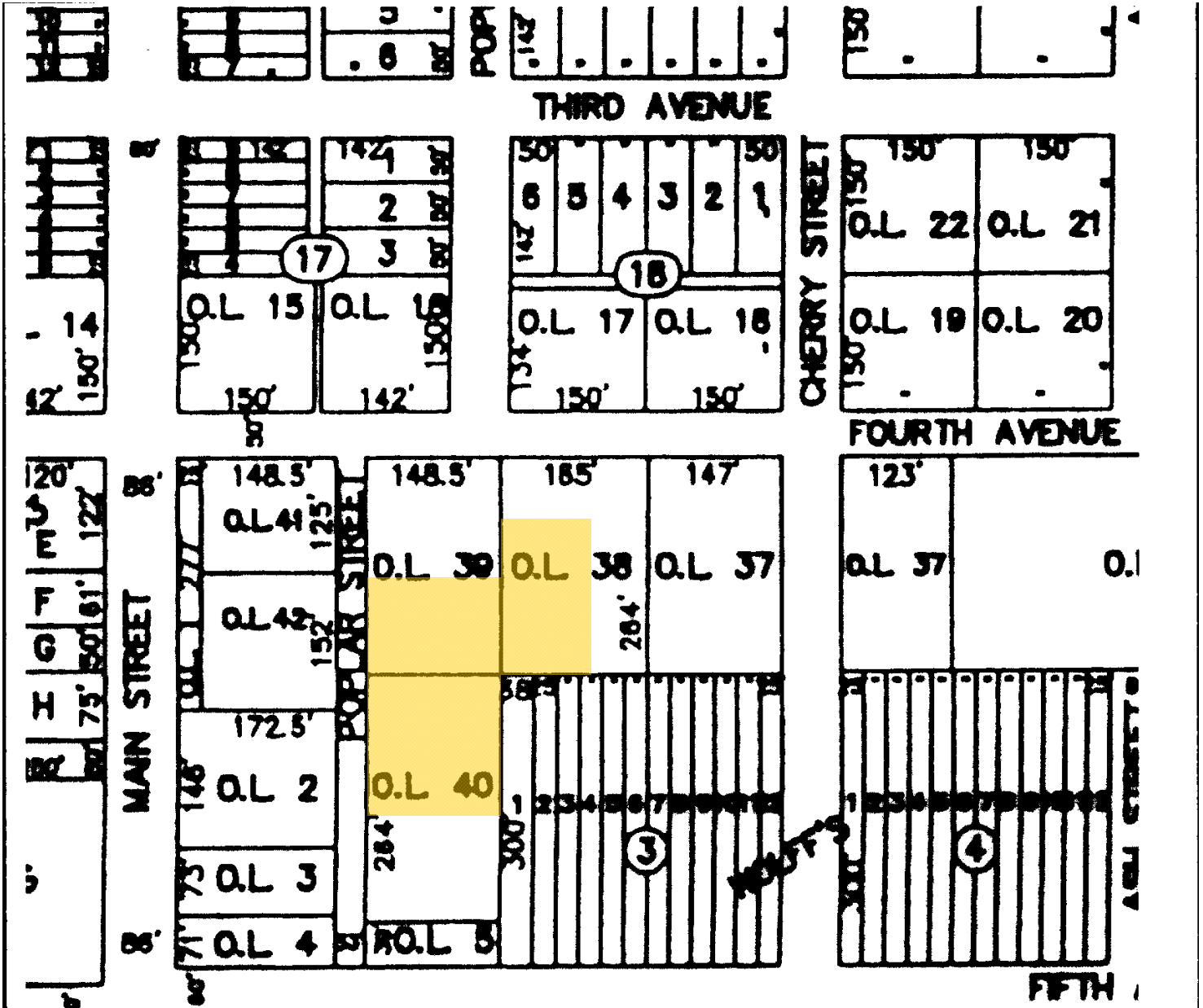
Web: www.siuoxfallscommercial.com



Site Plan



Site Plan



Aerial View



NAI Sioux Falls

Commercial Real Estate Services, Worldwide.