

For Sale - Duplex
Covrig Duplex
220 - 2201/2 S. Summit Avenue
Sioux Falls, SD 57104

**Owner will sell CFD with
acceptable down payment
and qualified buyer**



The information contained herein has been given to us by the owner of the property or other sources we deem reliable, we have no reason to doubt its accuracy, but we do not guarantee it. All information should be verified prior to purchase or lease.

List Price: \$95,000
(Price/unit: \$47,500)

Property Information

Total Building Sq. Ft.:	1,550
Total Units:	2
Land Size Sq. Ft.:	6,600
Real Estate Taxes:	\$1,647
Year Built:	1898
Zoning:	C-2
Construction:	Wood Frame, Wood Siding
Roof:	Asphalt Shingles

Property Summary

- ◇ Two-story duplex located between W. 10th & W. 11th Street on S. Summit.
- ◇ Unit mix: One (1) one bedroom, one bath
- ◇ One (1) two bedroom, one bath
- ◇ 100% occupied.
- ◇ Landlord pays heat, electric, sewer, water, garbage, snow removal and lawn care.
- ◇ Unit 220 1/2 has laundry hook-ups.
- ◇ Stove and refrigerator included in Unit 220, refrigerator, stove and dishwasher included in Unit 220 1/2.
- ◇ Off-street parking.
- ◇ Close to downtown.
- ◇ Private entrances.
- ◇ Easy access to W. 11th Street.
- ◇ Financials will be provided to qualified buyers upon request.
- ◇ Owner will sell Contract for Deed with acceptable down payment and qualified buyer.

NAI Sioux Falls

Commercial Real Estate Services, Worldwide.

Contact information

Mike Orr, Broker Associate
NAI Sioux Falls

101 N. Main Avenue, Suite 213
Sioux Falls, SD 57104

Direct: 605-444-7125

Cell: 605-370-9951

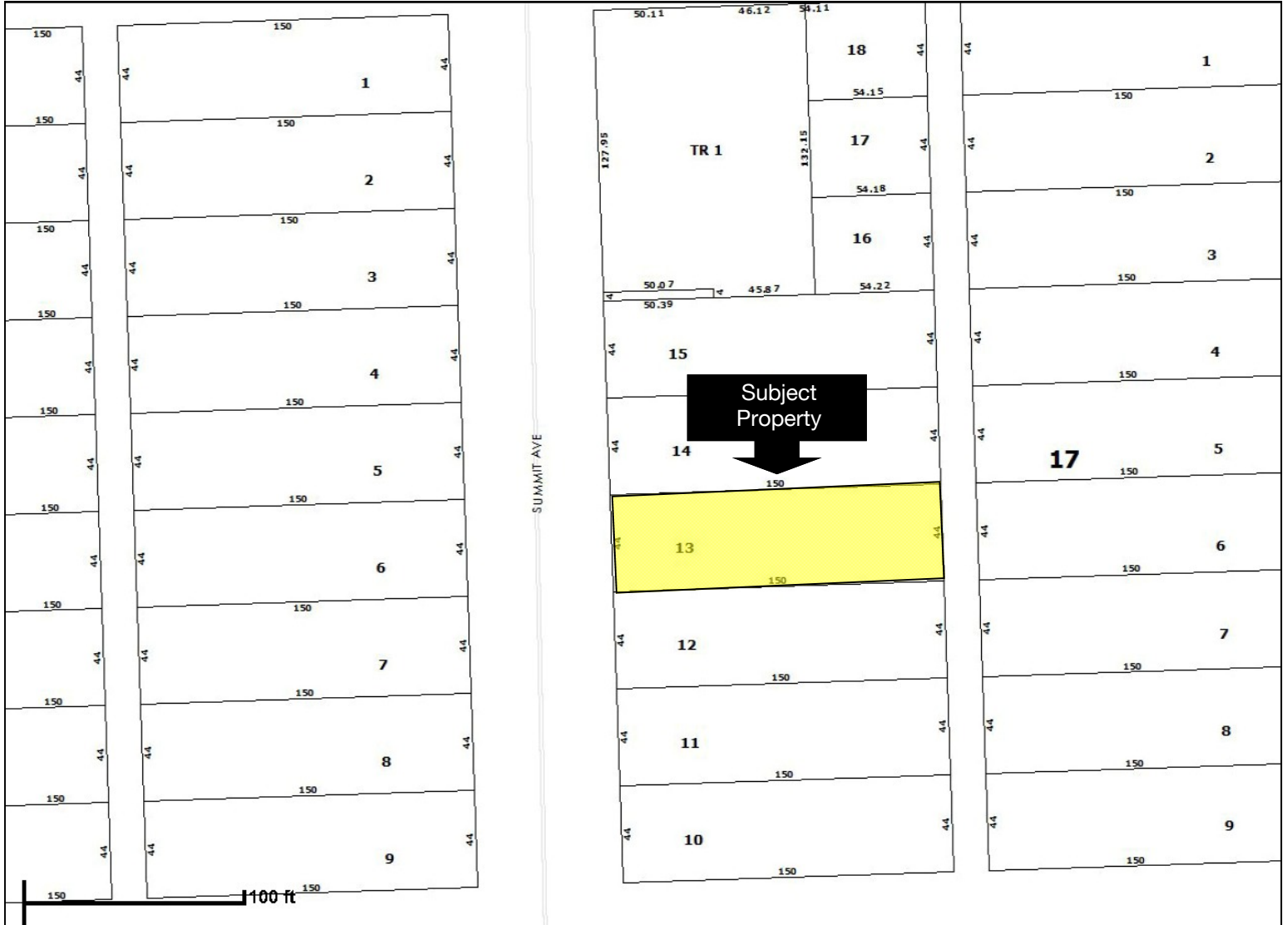
Fax: 605-357-7102

Email morr@naisiouxfalls.com

Web: www.sioxfallscommercial.com



Plat Map



Aerial View

