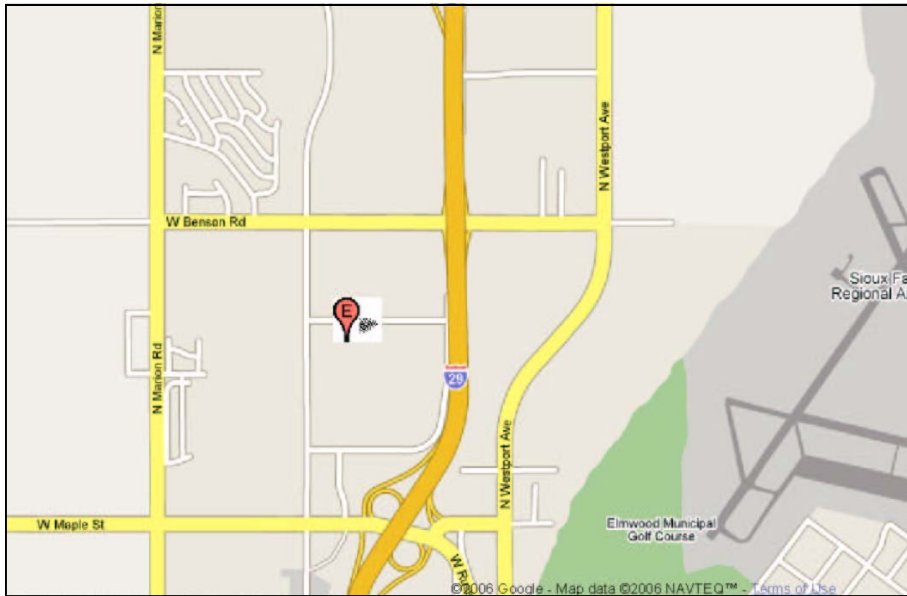
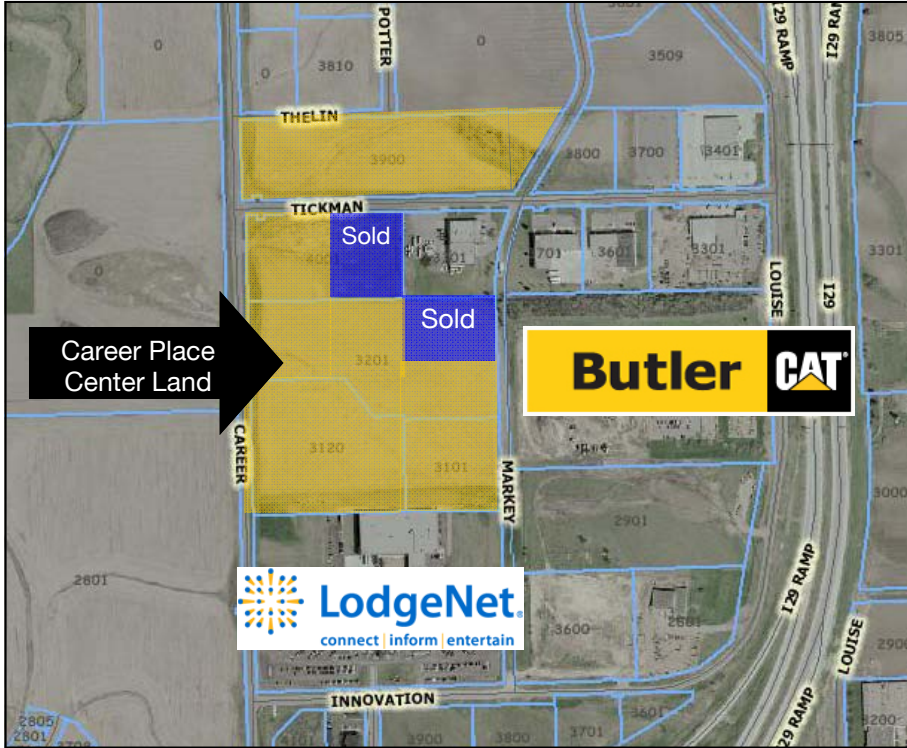


Land For Sale

Career Place Center

N. Markey & N. Career Avenues
Sioux Falls, SD 57107



Property Information

List Price/sq. ft:	Varies
Land Size/acres:	35.2
Zoning:	I-1
Real Estate Taxes:	TBD
Terms:	Cash

Property Summary

- 35.2 acres of industrial zoned land in a progressively growing area of northwest Sioux Falls.
- Easy access to I-29, I-90, Hwy 38, Hwy 42, and Benson Road.
- Various size parcels available.
- This property is bordered by Butler Machinery, Tiger Corporation and the Credit Store on the east. Southeastern Technical Institute and USDSU are a short drive south.
- Great location for a variety of commercial uses.

The information contained herein has been given to us by the owner of the property or other sources we deem reliable, we have no reason to doubt its accuracy, but we do not guarantee it. All information should be verified prior to purchase or lease.

Contact

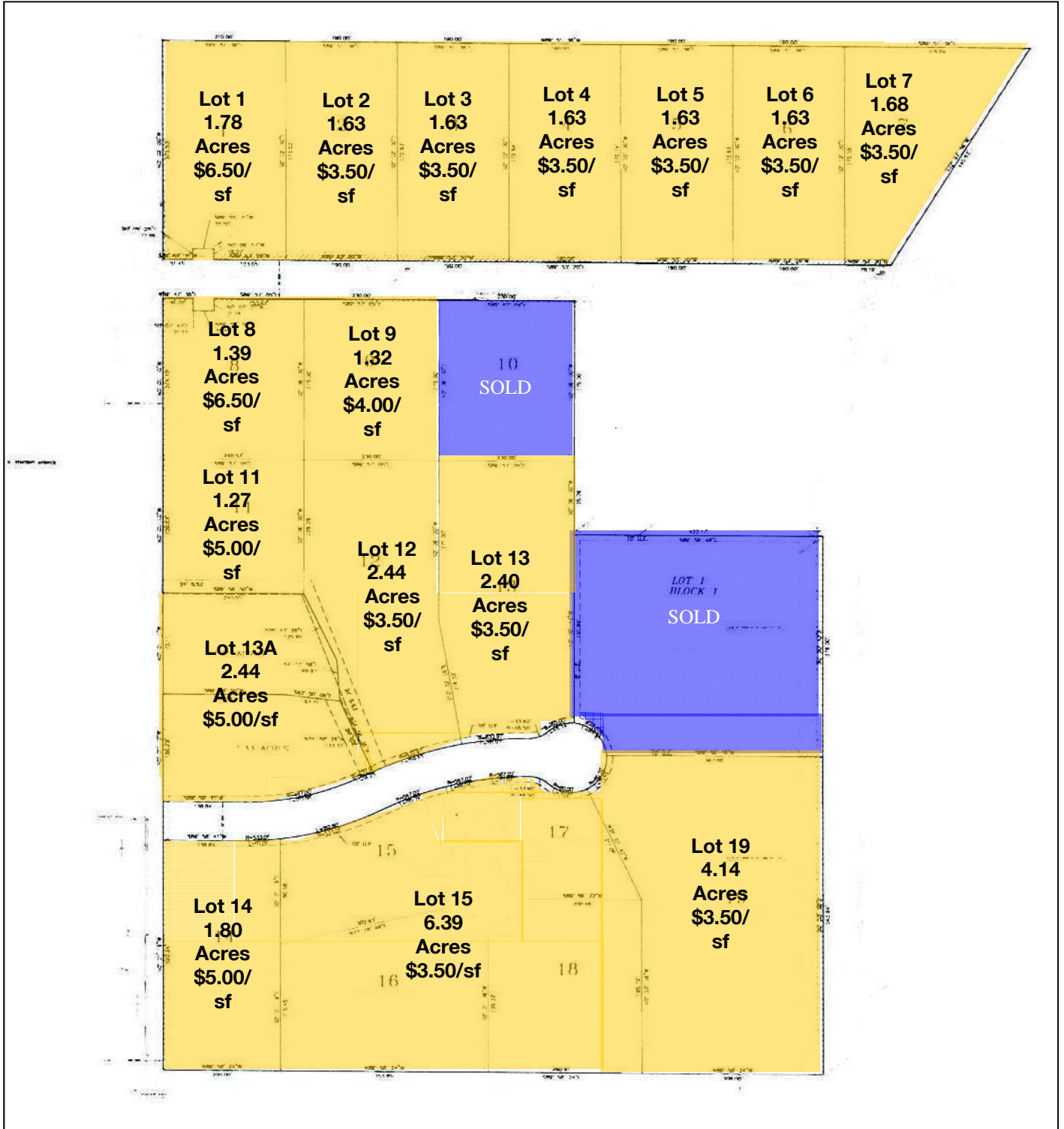
Dan Tunge, Broker Associate

NAI Sioux Falls
101 N. Main Avenue, Suite 213
Sioux Falls, SD 57104
Cell: 605-359-4511
Fax: 605-357-7102
Email: Daniel@sio.midco.net
Web: www.siouxfallsccommercial.com



Commercial Real Estate Services, Worldwide.

Plat Map



Aerial View

