

Office Space For Lease

Brouwer Relocation Building

4800 N. Velocity Avenue, Sioux Falls, SD 57104



NAI Sioux Falls

Commercial Real Estate Services, Worldwide.

The information contained herein has been given to us by the owner of the property or other sources we deem reliable, we have no reason to doubt its accuracy, but we do not guarantee it. All information should be verified prior to purchase or lease.

Lease Rate: \$750/Month
Lease Type: Gross

Property Information

Available Space/Sq. Ft.: 590
Total Building Sq. Ft.: 15,000
Land Area/Sq. Ft.: 106,049
Year Built: 2007
Construction: Steel Frame, Metal Panel
Zoning: I-1
Occupancy: Negotiable

Property Summary

- ◇ 590 square feet of office space located within the Brouwer Relocation building in the Sioux Empire Development Park 8.
- ◇ Shared warehouse space available if necessary.
- ◇ 26' sidewalls.
- ◇ Dock high door and drive-in door available.
- ◇ Footprint of building will allow up to an additional 640 square feet of floor space.
- ◇ Paved on-site parking.
- ◇ Monument signage.
- ◇ Easy access to Benson Road and I-229.

Dan Tunge, Broker Associate

NAI Sioux Falls

101 N. Main, Suite 213

Phone: 605-357-7100

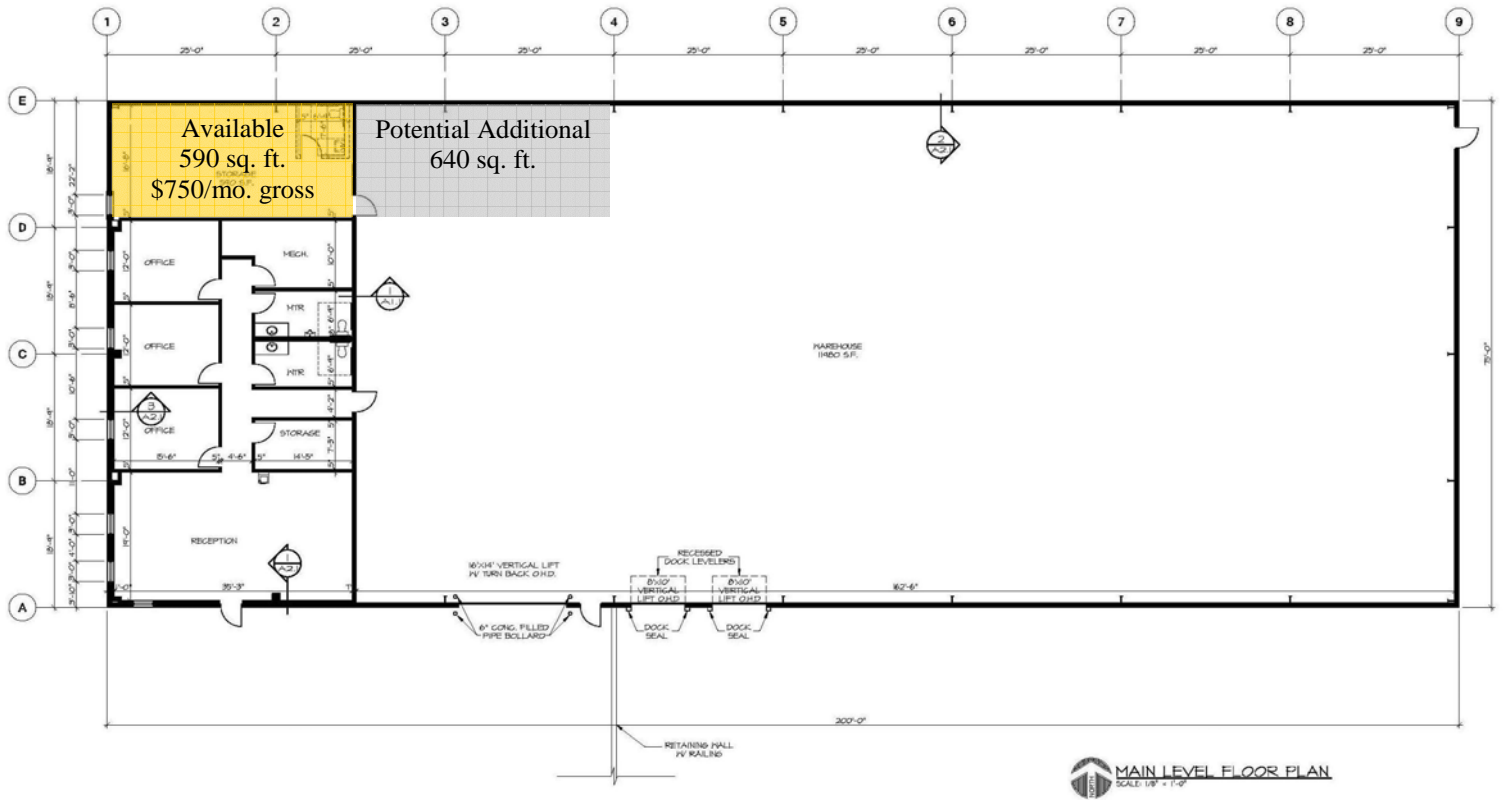
Cell: 605-359-4511

Fax: 605-357-7102

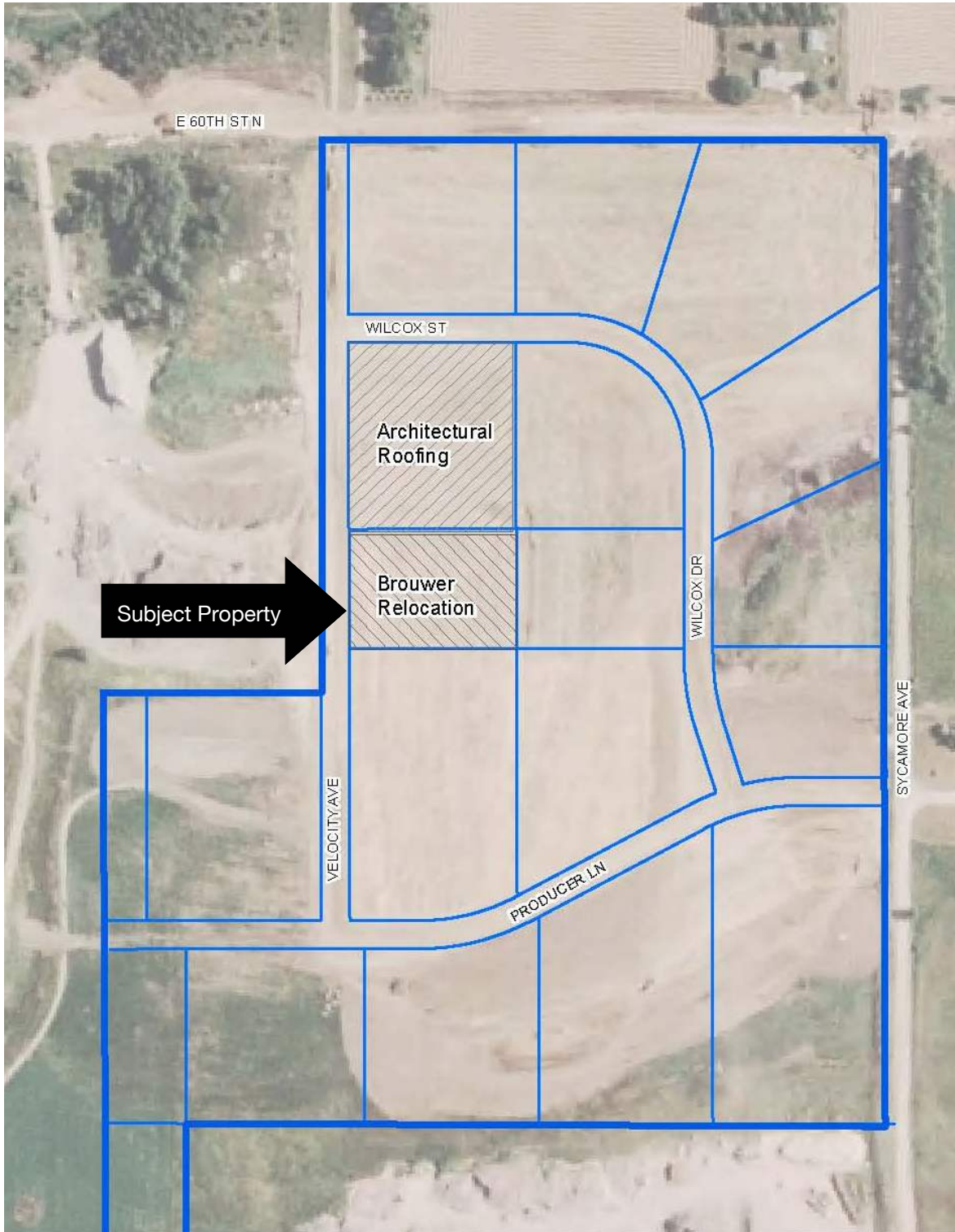
Email: Daniel@sio.midco.net

Website: www.siouxfallscommercial.com

Building Floor Plan



Plat Plan



Aerial View

