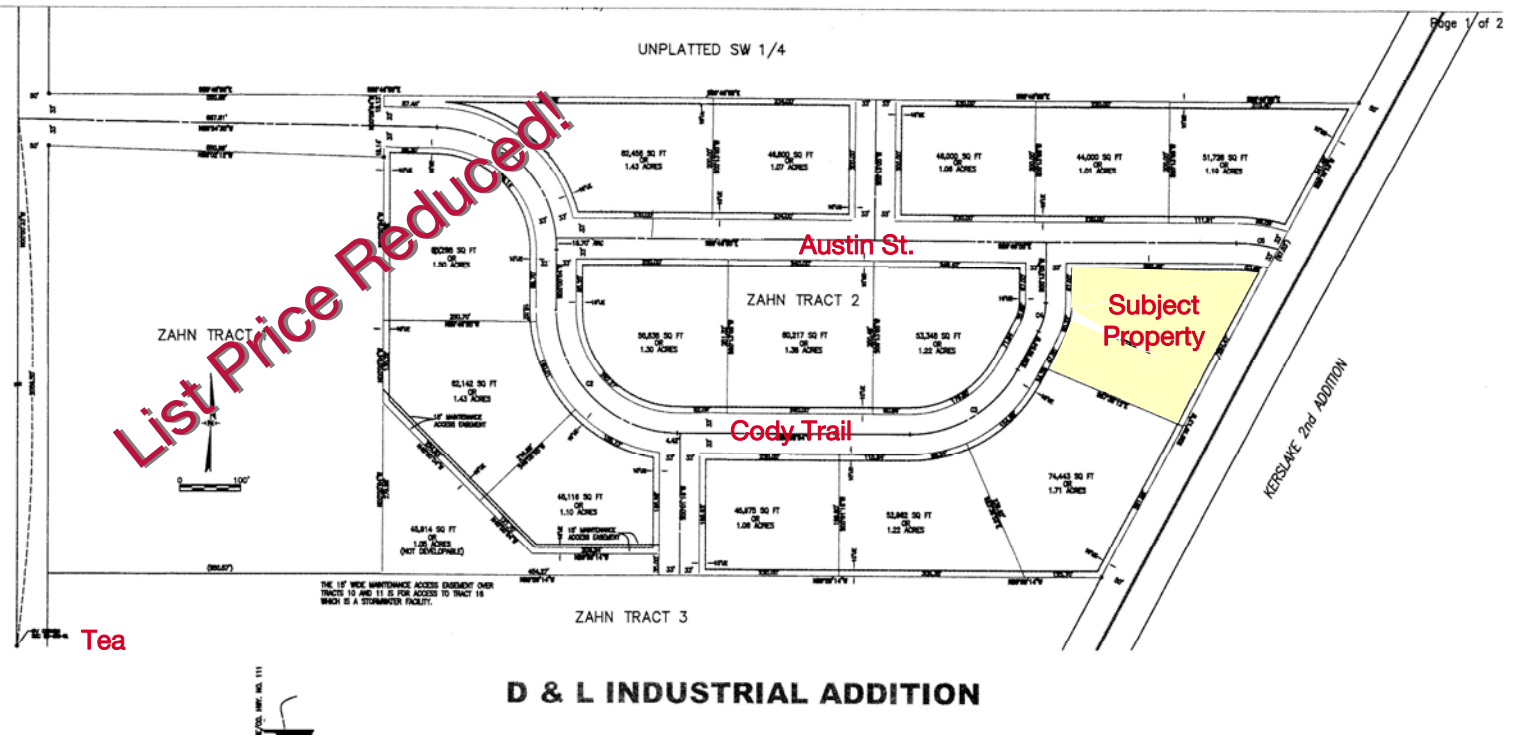


For Sale

Industrial Land

TBD Cody Trail, Tea, SD 57064



D & L INDUSTRIAL ADDITION

Lot Sale Price: \$90,000
(Approximately \$1.37/sq. ft.)

Property Information:

Land Size/Sq. Ft.: 65,725
Zoning: I-1
Real Estate Taxes: \$1454
Terms: Cash
Legal Description: Tract 6, Zahn's Tract 2,
D & L Addition

Property Summary:

- ◇ 65,725 sq. ft. development lot.
- ◇ Lincoln County Rural Water
- ◇ Septic system
- ◇ 3-Phase power available.
- ◇ New industrial park between Tea and I-29.
- ◇ Paved streets.
- ◇ Located in the D & L Industrial addition on 469th Avenue between Tea and I-29.

The information contained herein has been given to us by the owner of the property or other sources we deem reliable, we have no reason to doubt its accuracy, but we do not guarantee it. All information should be verified prior to purchase or lease.

Contact

Jeff Brooks, Broker Associate

Kathleen Hovland, Broker Associate

NAI Sioux Falls
101 N. Main Avenue, Suite 213
Sioux Falls, SD 57104
Fax: 605-357-7102
www.siuoxfallscommercial.com



NAI Sioux Falls

Commercial Real Estate Services, Worldwide.

Kathleen Contact Information
Direct: 605-444-7111
Cell: 605-351-5757
khovland@naisiouxfalls.com

Jeff Contact Information
Direct: 605-444-7122
Cell: 605-261-2215
jbrooks@naisiouxfalls.com

