

For Sale or Build-to-Suit
60th Street North Land
60th Street North & Westport Avenue
Sioux Falls SD 57107



List Price: \$2.50 - \$5.00/sq. ft.

Property Information

Land Size/Acre: Up to 26 Acres
Dimensions: Irregular
Zoning: Commercial & Agricultural
Legal Description: NW1/4 NE1/4 (EX Lot 1, Block 1)
Dunlap's Addition 31-102-49
Real Estate Taxes: TBD

Property Summary

- ◇ Up to 26 acres available for sale or build-to-suit.
- ◇ May be divided.
- ◇ Six acres on the corner are zoned commercial and available for \$5.00/sq. ft.
- ◇ Located at the southeast corner of 60th Street North (SD Hwy 38) and Westport Ave.
- ◇ Excellent access to I-29, I-90, and the Sioux Falls Regional Airport.
- ◇ Recent construction in the area includes Army Reserve, Baete-Forseth, Sherwin Williams, Cimarron Label, Premier Bankcard, Esurance, and University Center.
- ◇ 2009 Traffic Counts for 60th Street N is 12,100 vehicles per day and for Westport Avenue is 2,100 vehicles per day.

The information contained herein has been given to us by the owner of the property or other sources we deem reliable, we have no reason to doubt its accuracy, but we do not guarantee it. All information should be verified prior to purchase or lease.

Contact information

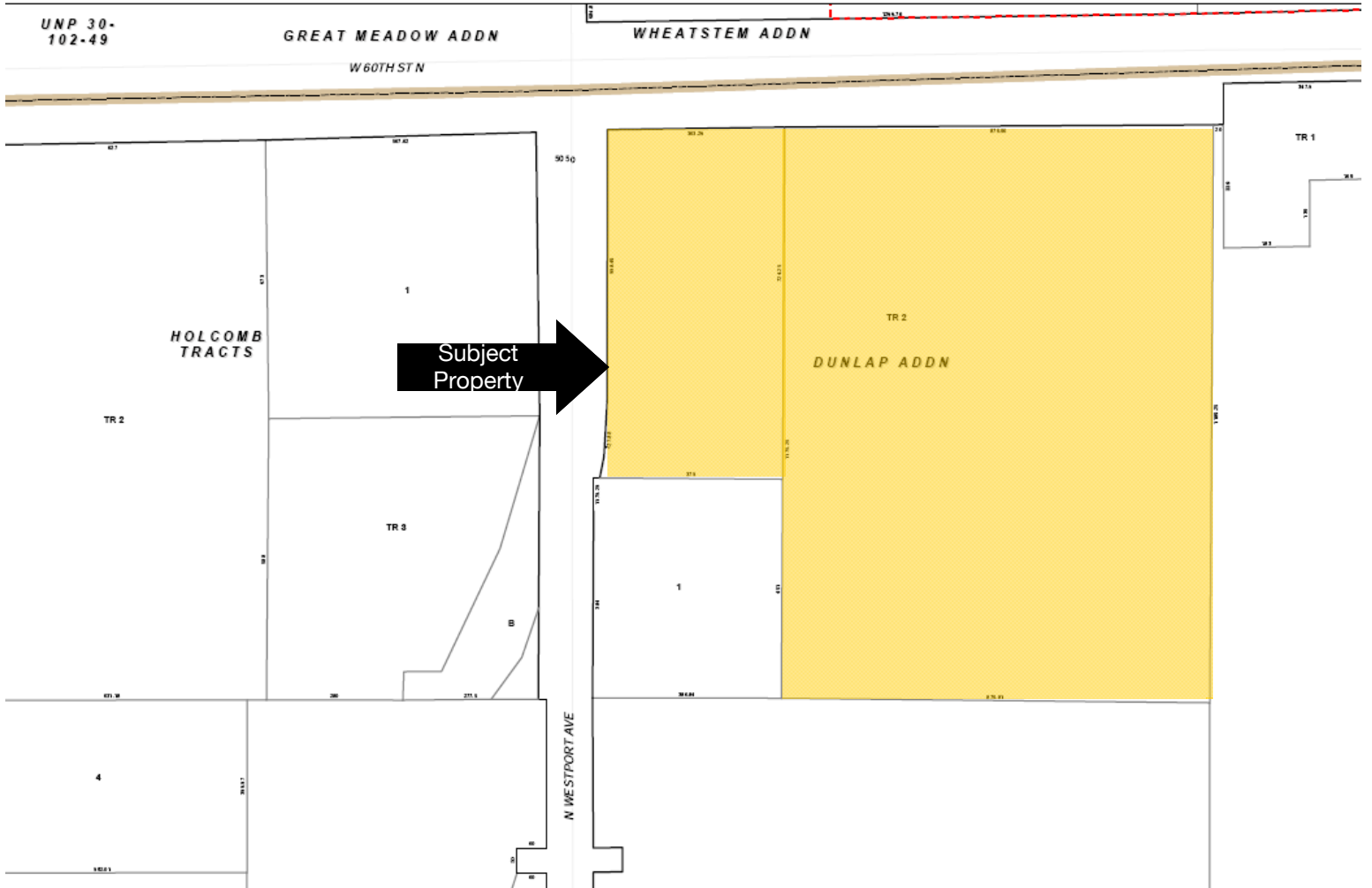
Craig Hagen, Broker
101 N. Main Avenue, Suite 213
NAI Sioux Falls
Direct: 605 444-7115
Fax: 605 357-7102
Cell: 605-310-4227
Email: chagen@naisiouxfalls.com
Web: www.sioxfallscommercial.com



NAI Sioux Falls

Commercial Real Estate Services, Worldwide.

Plat Plan



Aerial View

