

For Lease
Brandon Industrial Property
900 Ash Street
Brandon, SD 57005



Lease Rate: \$5.00/Sq. Ft.
Lease Type: NNN

Property Information

Available Sq. Ft.:	17,660
Building Sq. Ft.:	17,660
Lot Size Sq. Ft.:	92,794
Year Built:	1996
Zoning:	Heavy Industrial
Real Estate Taxes:	\$11,043
Construction:	Steel Frame, Metal Panel
Roof:	Metal

The information contained herein has been given to us by the owner of the property or other sources we deem reliable, we have no reason to doubt its accuracy, but we do not guarantee it. All information should be verified prior to purchase or lease.

Property Summary

- ◇ Industrial building visible from I-90 located on Ash Street in Brandon's Burkman Industrial Park 2 .
- ◇ A total of 17,660 sq. ft. available.
- ◇ 2,400 sq. ft of office space.
- ◇ 15,000 sq. ft. of heated and air conditioned shop/warehouse.
- ◇ 20' sidewalls.
- ◇ Two overhead and one dock high doors.
- ◇ Three-phase power.
- ◇ 8" double rebar reinforced concrete throughout shop area.
- ◇ Flexible setup options for machine tools.
- ◇ Two acre lot located east of building available for Tenant's use.

Contact

Craig Hagen, Broker

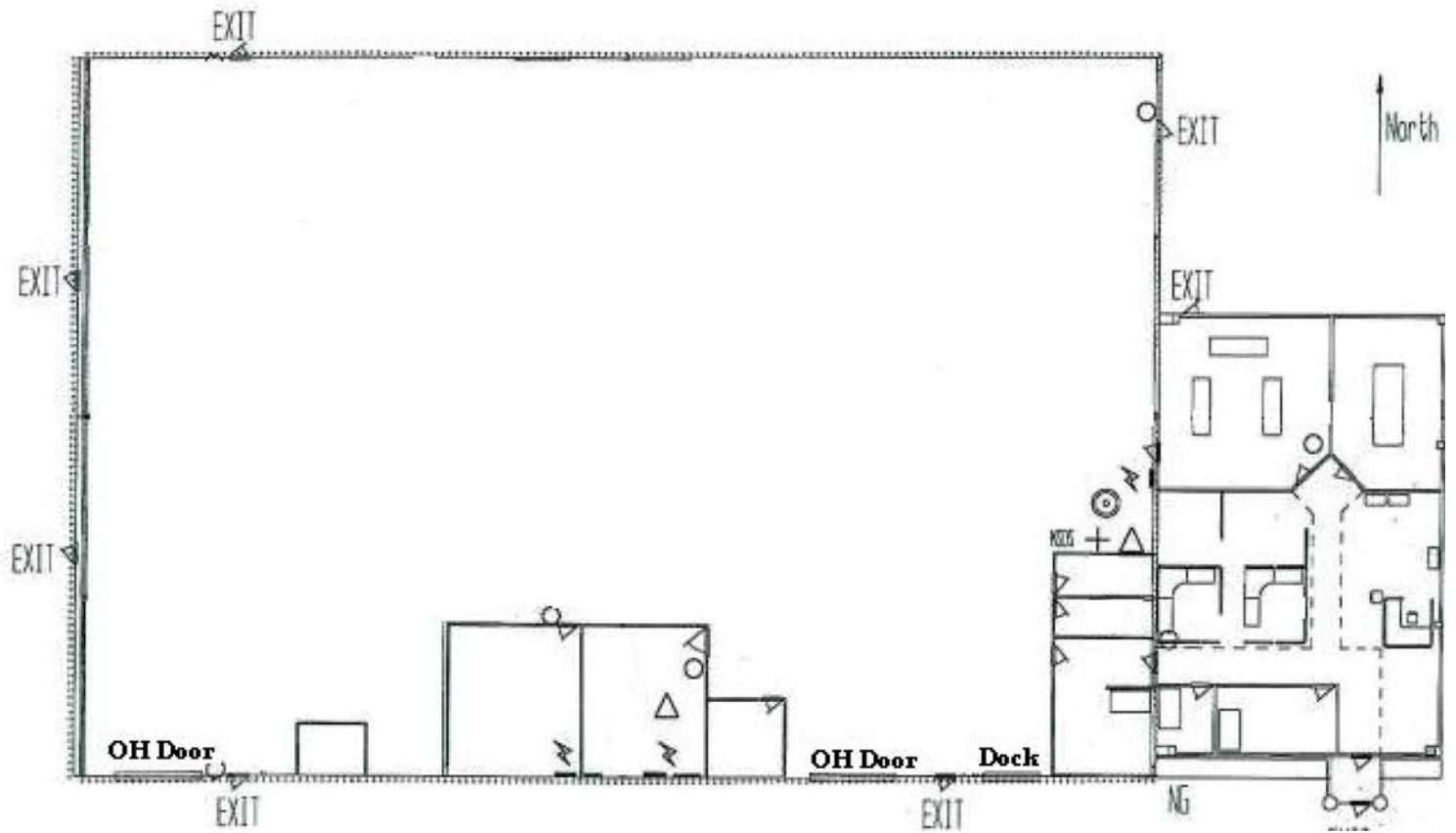
NAI Sioux Falls
101 N Main Avenue, Suite 213
Sioux Falls, SD 57104
Direct: 605-444-7115
Cell: 605-310-4227
Fax: 605-357-7102
Email: chagen@naisiouxfalls.com
Web: www.sioxfallscommercial.com



NAI Sioux Falls

Commercial Real Estate Services, Worldwide.

Floor Plan



Plat Map



Aerial View

