

For Lease
Office Space
Lease Rate: \$8.00/ sq. ft. gross
plus utilities



39th Street N Office Suite 100 & 200

2209 E. 39th Street N, Sioux Falls, SD 57104

Property Features

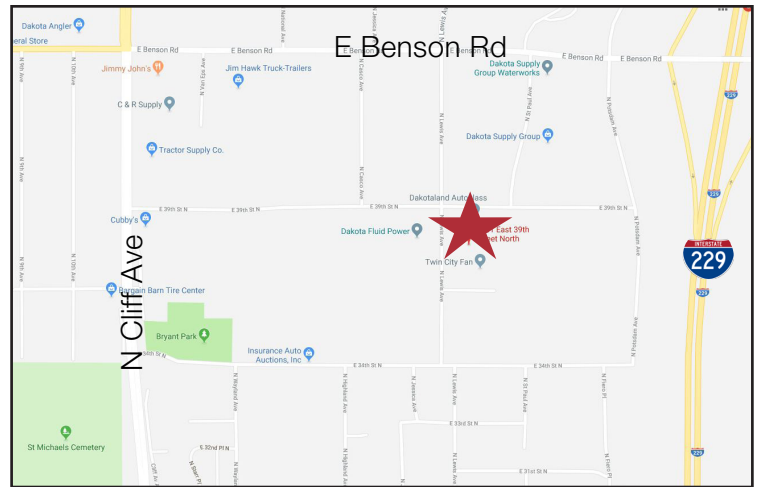
- Affordable, functional office space in a popular trade area
- Suite size: 4,354 sq. ft. on two levels
- 2,177 sq. ft. per floor
- Paved, on-site parking
- Building signage
- Easy access from E. Benson Road and 39th Street N.
- Close proximity to I-229
- Space is available immediately

Pricing

- Lease rate: \$8.00/ sq. ft. gross + utilities

Location

- Located just east of North Cliff Avenue on 39th Street
- Area neighbors include: Dakotaland AutoGlass Dakota Fluid Power, Dakota Supply Group, Nordica Warehouse, Tractor Supply, Ben's Bargain Barn Tire Center, Dakota Wall Systems, Casco Storage Units, Empire Motorsports



Marcus Mahlen, CCIM

+1 605 228 9744 mobile

mmahlen@naisiouxfalls.com



Troy Fawcett, CCIM, SIOR

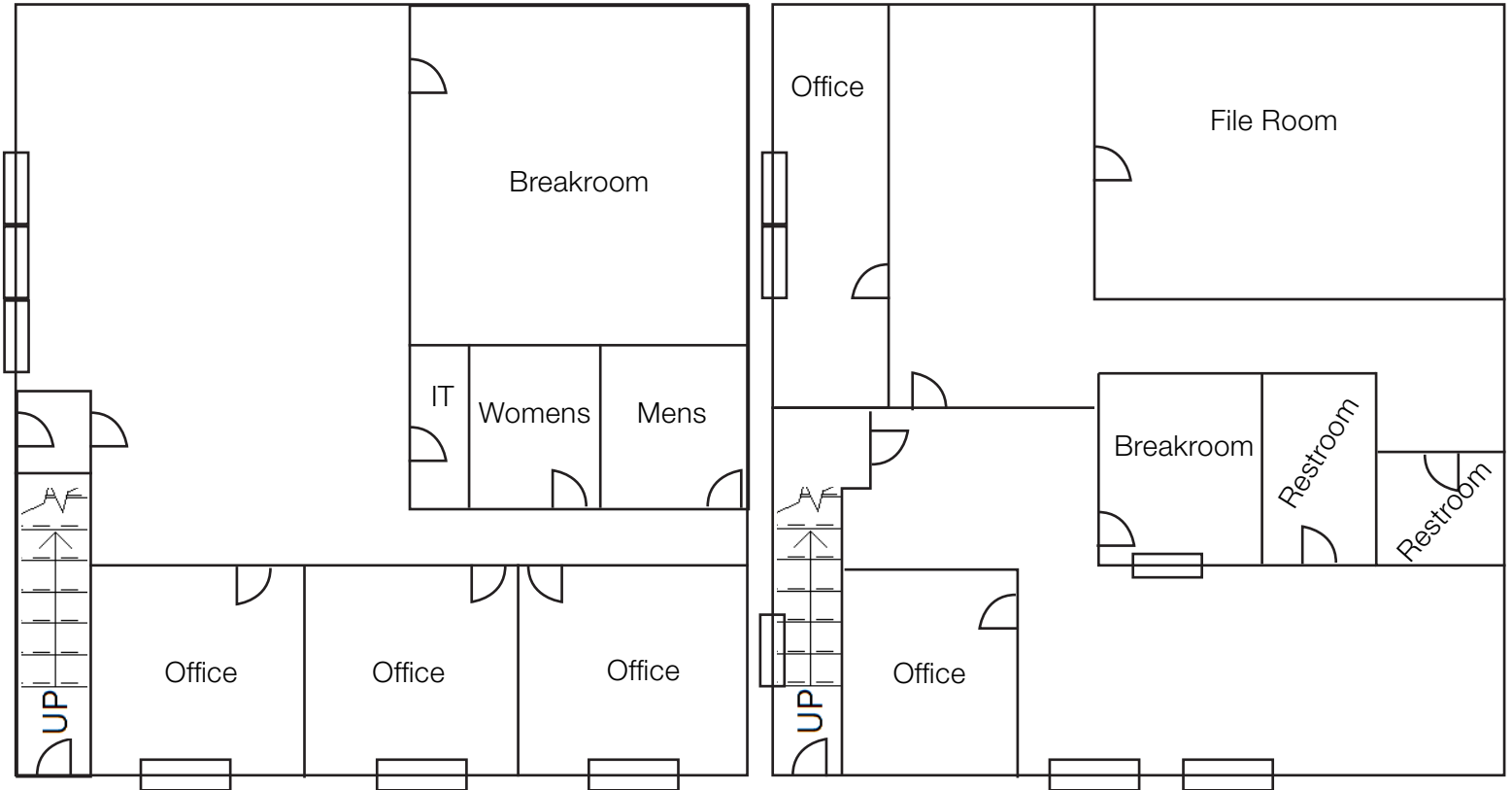
+1 605 321 2199 mobile

tfawcett@naisiouxfalls.com

For Lease
Office Space

Suite 100

Suite 200



For Lease
Office Space



For Lease
Office space

