

6.075 Acres I-1 Land



N. Lewis Avenue & 39th Street N. Sioux Falls, SD 57104

Property Features

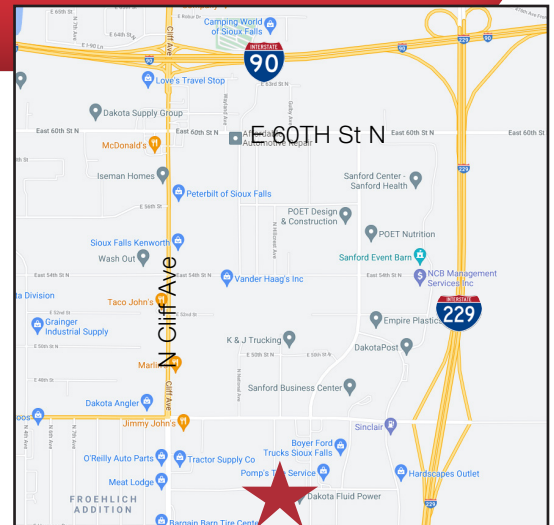
- Lot B: 6.075 acres (264,547 sq. ft.) - Under Contract
- Zoning: I-1

Pricing

- Lot B: +/- \$862,161 (\$3.25/sq. ft.) - Under Contract

Location

- Located east of N. Cliff Avenue on E. 39th Street N.
- Area neighbors include: Dakotaland AutoGlass, Dakota Fluid Power, Dakota Supply Group, Nordica Warehouse, Tractor Supply, Ben's Bargain Barn Tire Center, Dakota Wall Systems, Casco Storage Units, Empire Motorsports



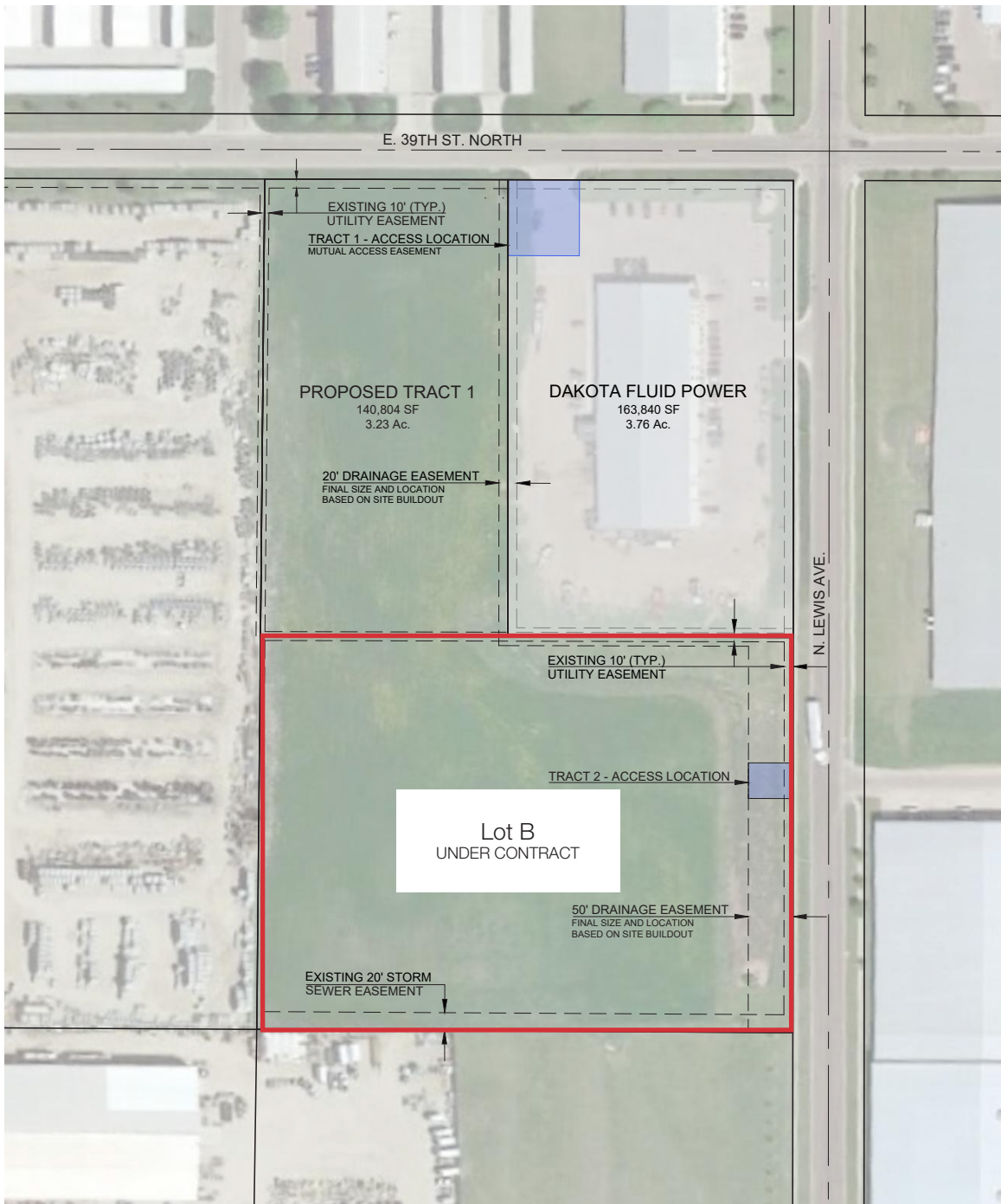
Gregg Brown, MBA, SIOR
Senior Vice President, Managing Director
605 906 0394 • gbrown@naisiouxfalls.com

Craig Hagen, CCIM, SIOR
Senior Vice President
605 310 4227 • chagen@naisiouxfalls.com

NO WARRANTY OR REPRESENTATION, EXPRESS OR IMPLIED, IS MADE AS TO THE ACCURACY OF THE INFORMATION CONTAINED HEREIN, AND THE SAME IS SUBMITTED SUBJECT TO ERRORS, OMISSIONS, CHANGE OF PRICE, RENTAL OR OTHER CONDITIONS, PRIOR SALE, LEASE OR FINANCING, OR WITHDRAWAL WITHOUT NOTICE, AND OF ANY SPECIAL LISTING CONDITIONS IMPOSED BY OUR PRINCIPALS NO WARRANTIES OR REPRESENTATIONS ARE MADE AS TO THE CONDITION OF THE PROPERTY OR ANY HAZARDS CONTAINED THEREIN ARE ANY TO BE IMPLIED.

2500 W. 49th Street Suite 100
Sioux Falls, SD 57105
605 357 7100
naisiouxfalls.com

FOR SALE



3409 N. LEWIS AVENUE

PREPARED: APRIL 29, 2021

*ALL BOUNDARY INFORMATION SHOWN IS APPROXIMATE AND SHOULD NOT BE USED FOR DESIGN OR CONSTRUCTION PURPOSES

NAI Sioux Falls



2500 W. 49th Street Suite 100
Sioux Falls, SD 57105
605 357 7100
naisiouxfalls.com

FOR SALE

