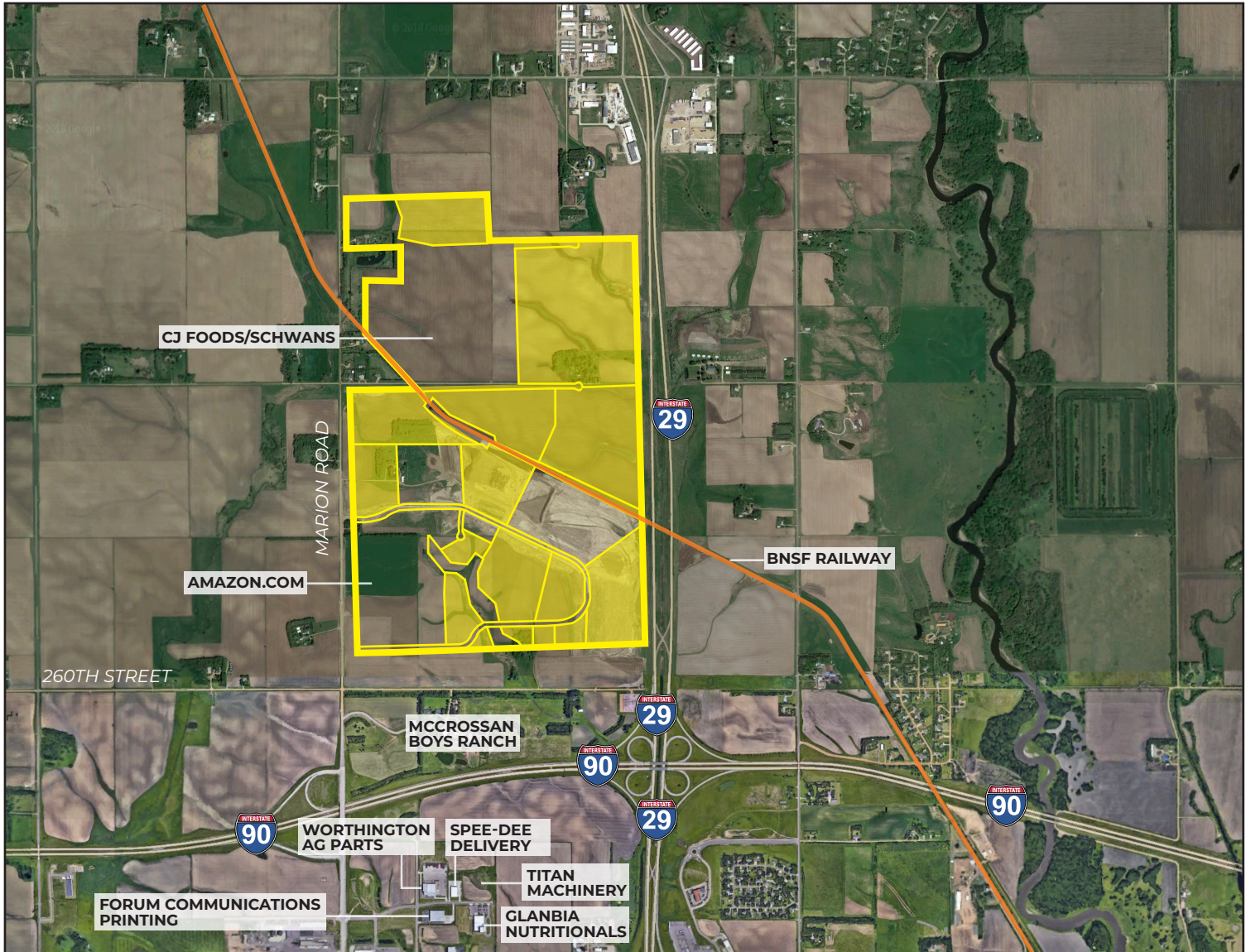


FOUNDATION PARK

Sioux Falls, South Dakota



PROPERTY FEATURES

- BNSF Class I rail site
- Zoned I-2
- All utilities to site
- On-site detention (BMP) required
- BNSF Certified Site
- Xcel Energy Certified Site
- Subdividable or combined
- Existing tenants: Amazon, CJ Foods/Schwans, Win Chill Cold Storage, Dakota Carriers, Nordica Warehouses, Tessier's Inc.
- 135 acres of available rail access

PRICING

- Rail Access – Starting at \$3.75 psf

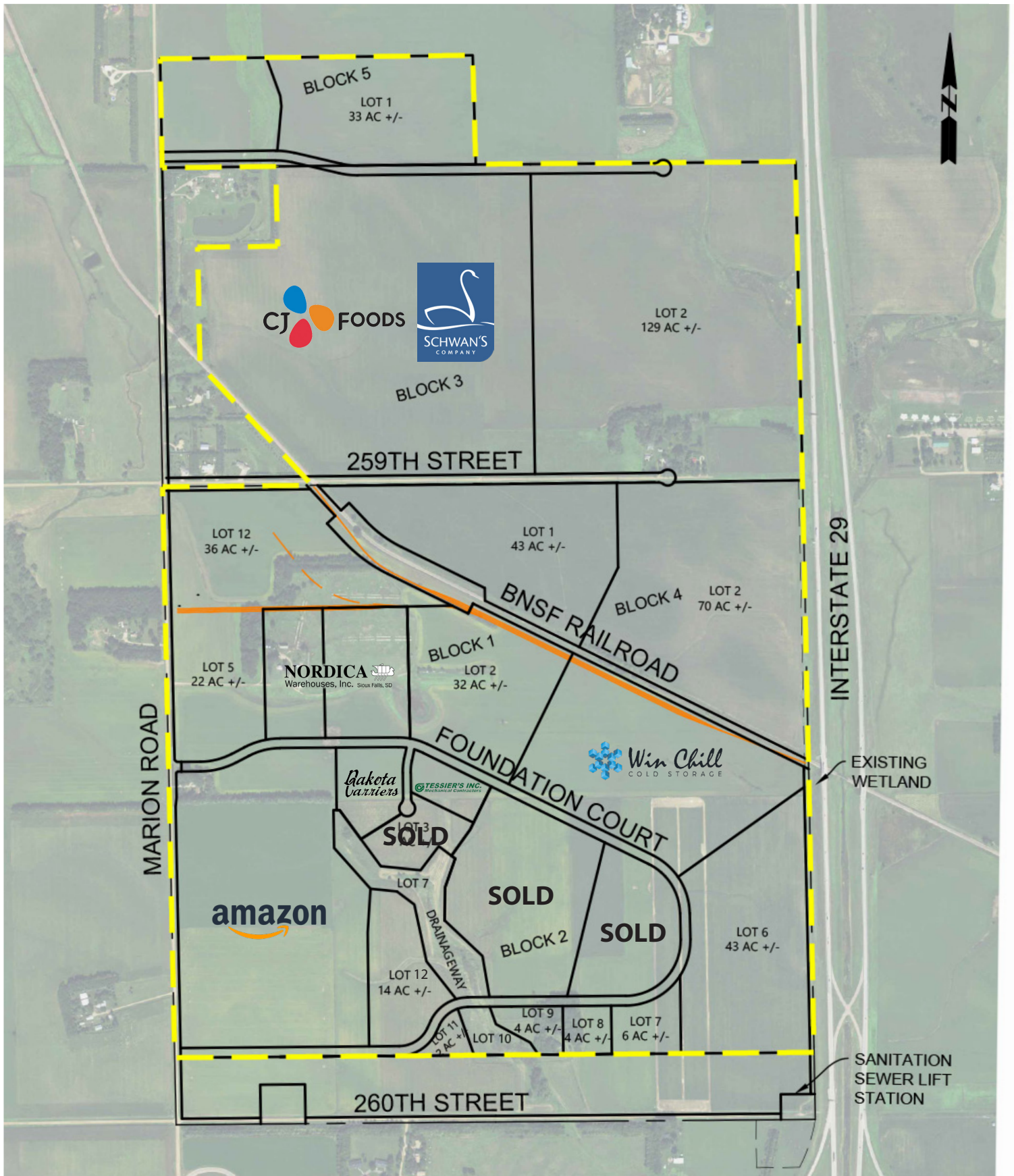
LOCATION

- Located at intersection of I-29 & I-90
- Minutes from Sioux Falls Regional Airport (FSD)
- ~20,000 total traffic volume per day

FOR MORE INFORMATION CALL 605-223-1066

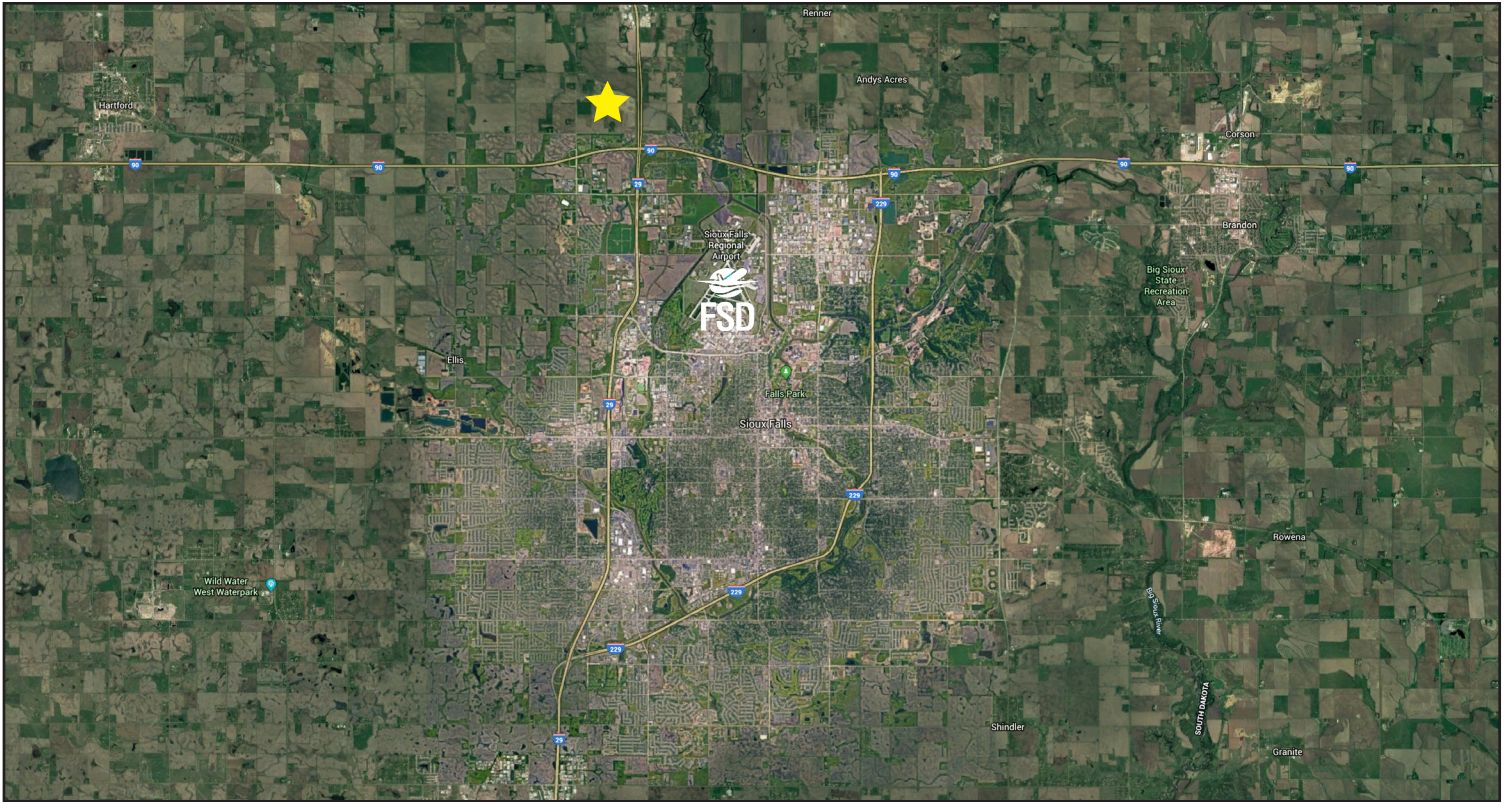
FOUNDATION PARK

Sioux Falls, South Dakota



FOUNDATION PARK

Sioux Falls, South Dakota



605.339.0103

siouxfallsdevelopment.com

DEAN DZIEDZIC
Vice President of Economic Development
deand@siouxfalls.com

BOB MUNDT
President/CEO of Economic Development
bobm@siouxfalls.com



605.336.7600

benderco.com

ROB FAGNAN, SIOR
Principal – Industrial & Land Markets
rob@benderco.com

MICHAEL BENDER, CCIM, SIOR
Principal – Office & Land Markets
michael@benderco.com



605.357.7100

siouxfallscommercial.com

GREGG BROWN, MBA, SIOR
Senior Vice President/Managing Director
gbrown@naisiouxfalls.com

DENNIS BRESKE, CCIM, SIOR, MBA
Senior Vice President
dbreske@naisiouxfalls.com