



Jameson Building

3500 S. Phillips Avenue, Sioux Falls, SD 57105

Property Features

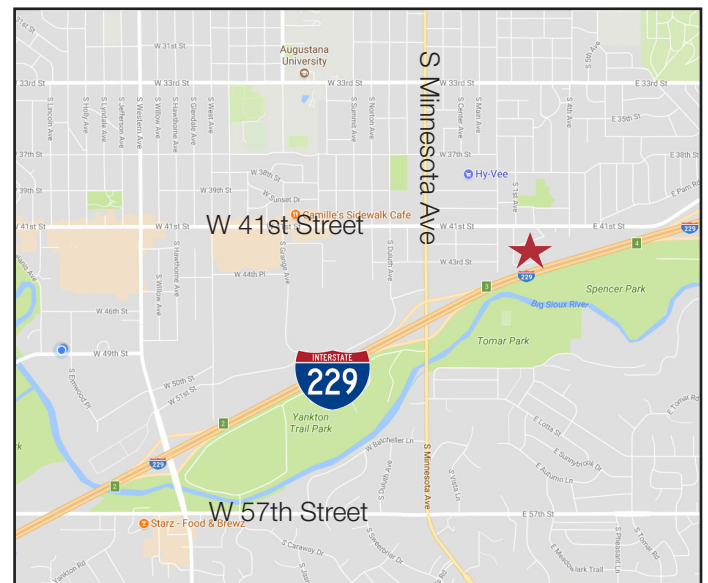
- Suite 201: 1,894 sq. ft.
- Suite 243: 1,070 sq. ft.
- Professional, private location
- Recently renovated and updated
- Suite features private offices
- Common area restrooms and board/conference room included in rent
- Paved, on-site parking

Pricing

- Lease rate: \$12.00/ sq. ft. gross plus utilities

Location

- Building located on the Southeast corner of E. 43rd Street and S. Phillips Avenue
- Easy access to Minnesota Avenue, Interstate 229 and 41st Street

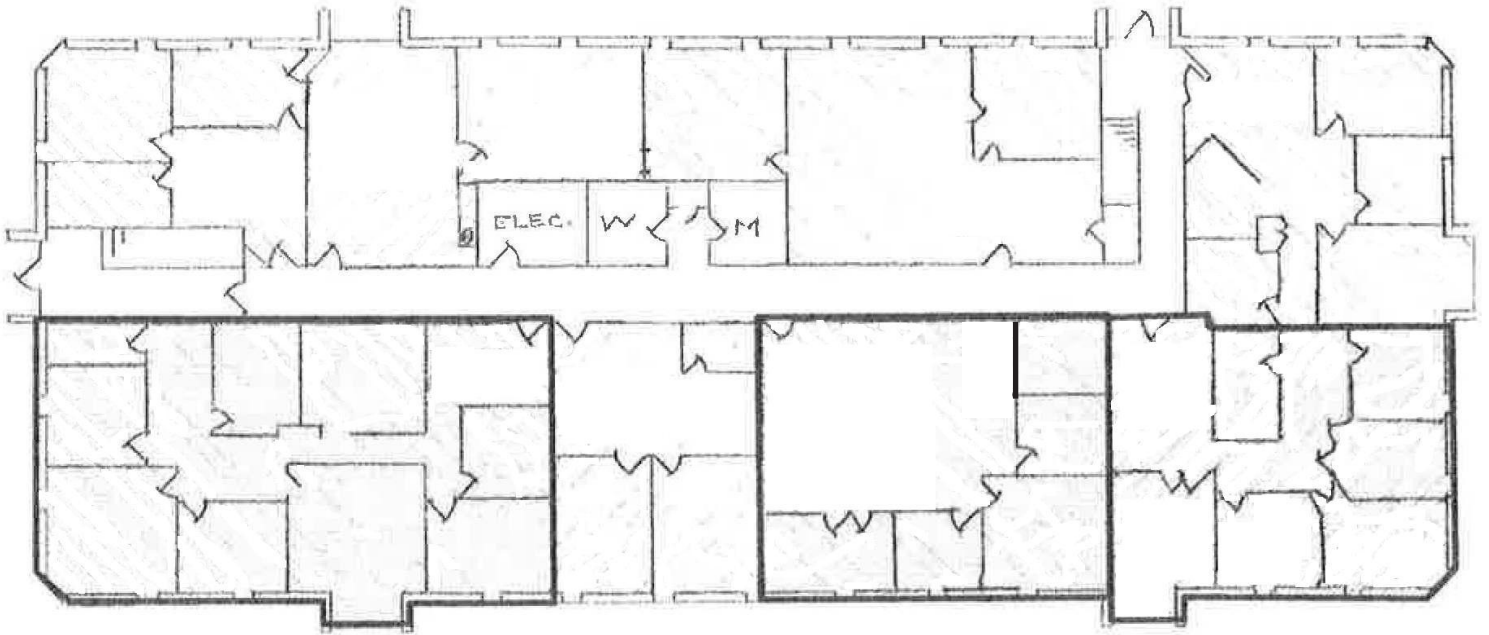


For more information:

Ryan Ammann

+1 605 310 7091 • rammann@naisiouxfalls.com

FOR LEASE



First Floor Plan



Second Floor Plan

FOR LEASE



NA Sioux Falls

2500 W. 49th Street Suite 100
Sioux Falls, SD 57105
+1 605 357 7100
naisiouxfalls.com

FOR LEASE

