

For Lease

Office Space

Lease Rate: \$475/month gross



## MacArthur Square

5000 S. MacArthur Lane #106  
Sioux Falls, SD 57108

### Property Features

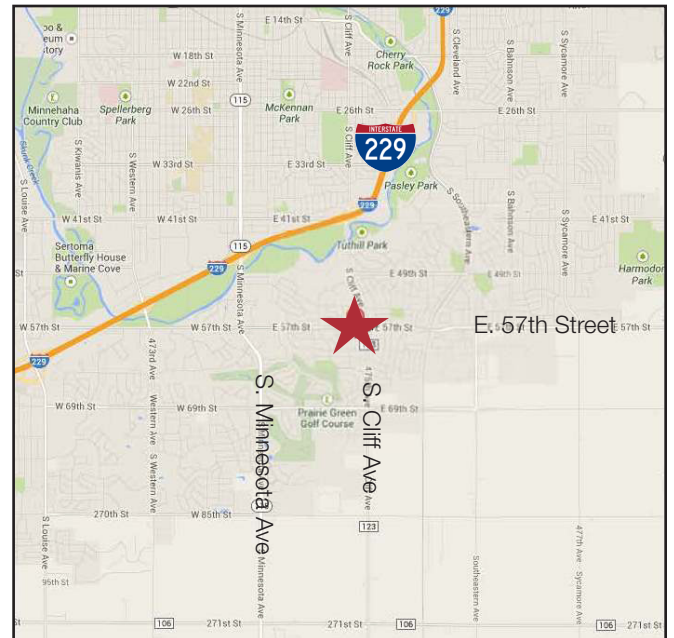
- 199 sq. ft. executive suite
- Community room with a kitchenette, conference table, and seating area
- Underground and surface parking
- Monument and building signage

### Pricing

- Lease Rate: \$475/ month gross

### Location

- Located on 57th Street west of Cliff Avenue
- Area neighbors include Wells Fargo, Dacotah Bank, Cortrust Bank, Taco Johns, Burger King, Walgreens and Hy-Vee



**Craig Hagen, CCIM, SIOR**

605 310 4227

chagen@naisiouxfalls.com

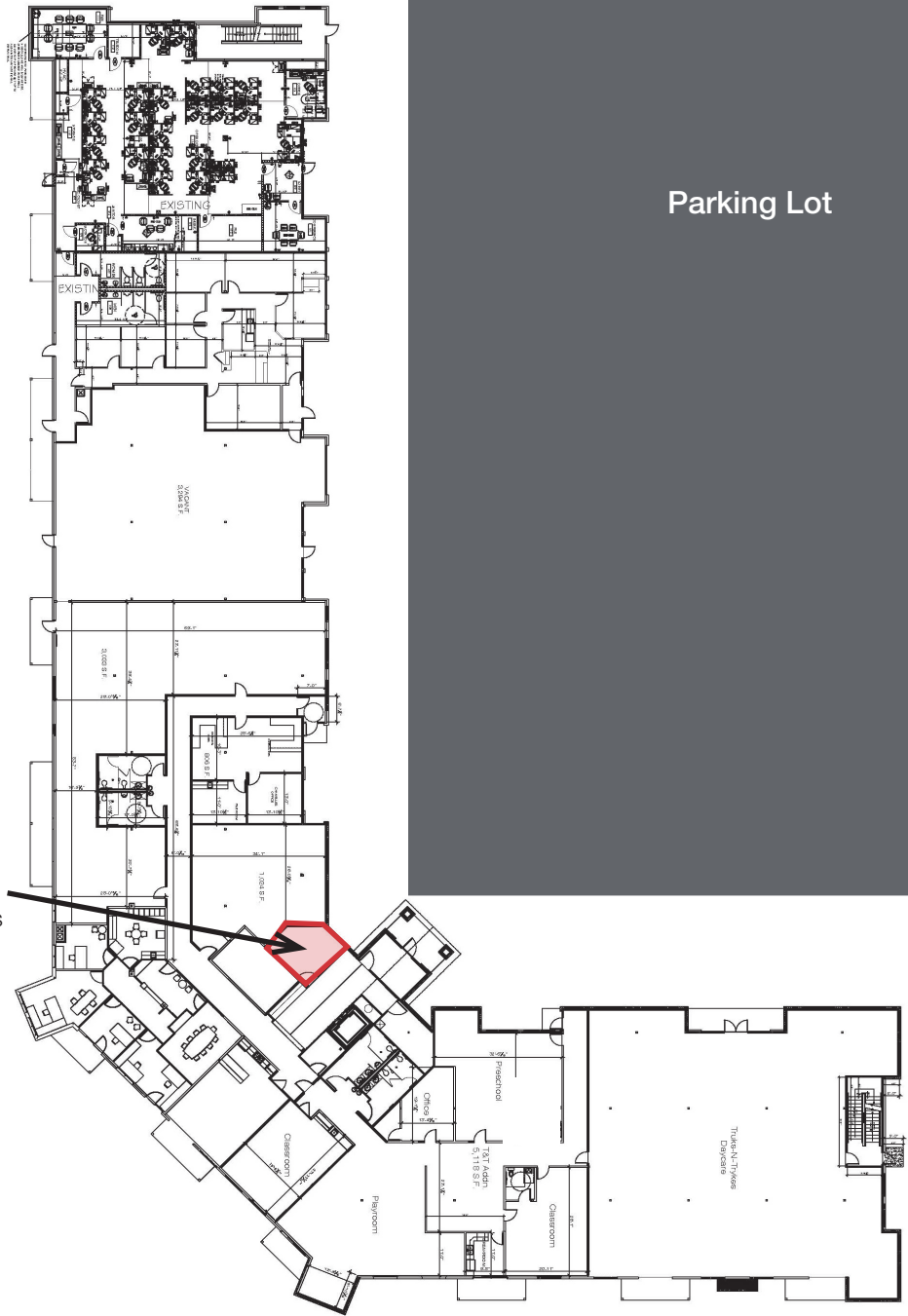
For Lease  
Executive Suite

E 57th Street

Parking Lot

S Cliff Avenue

Suite 106  
Available  
199 Sq. Ft.  
\$475/month gross





For Lease  
Executive Suite



Community Room



Monument Signage