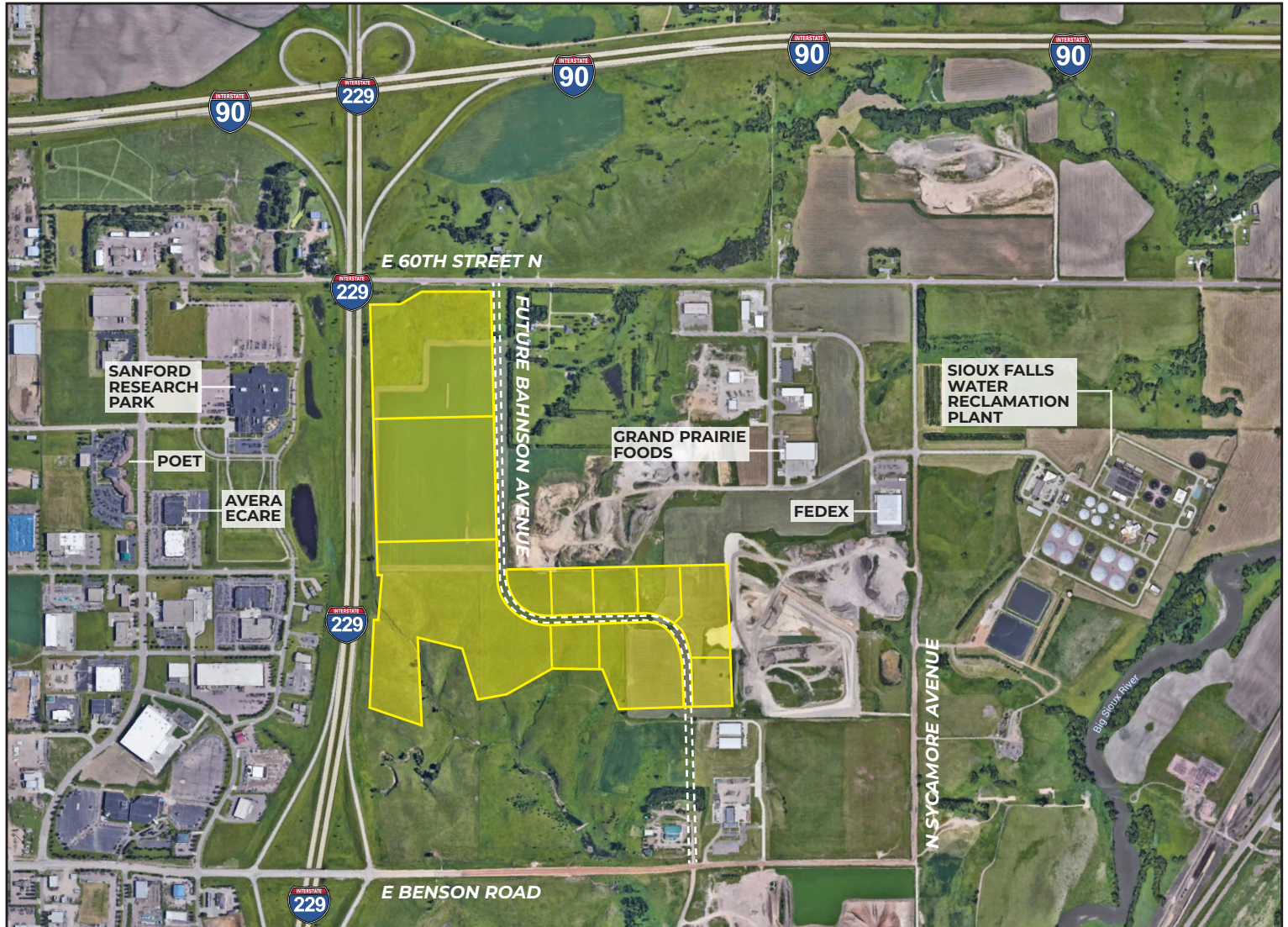


SIOUX EMPIRE DEVELOPMENT PARK PARK VIII - WEST

Sioux Falls, South Dakota



PROPERTY FEATURES

- Protective covenants in place
- Zoned I-1 for light industrial
- Utilities under development
- On-site detention (BMP) required
- Range of 5-75 acre sites available
- Subdividable or combined

PRICING

- Starting at \$3.50 psf

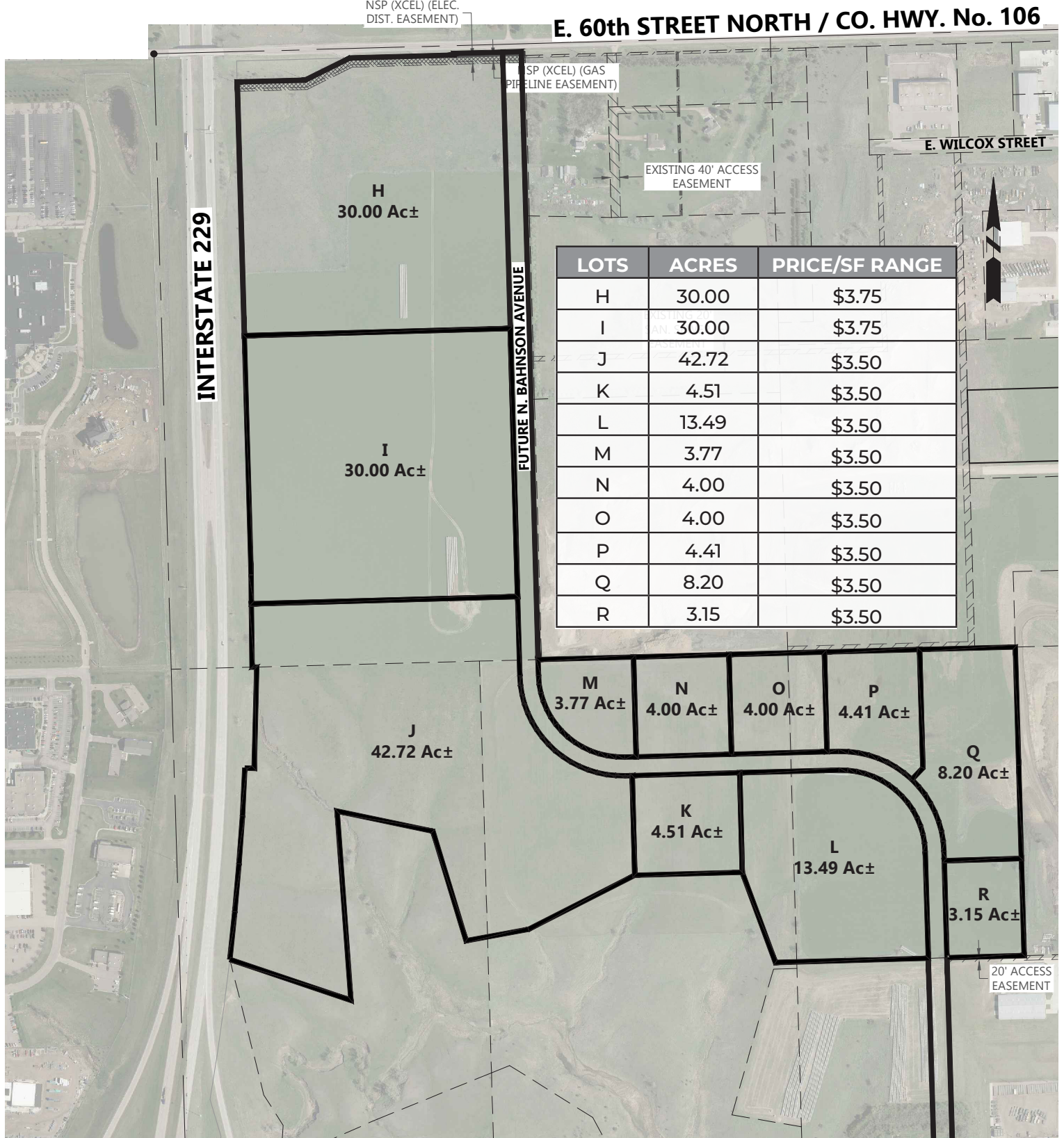
LOCATION

- Minutes from Sioux Falls Regional Airport (FSD)
- Located near the intersection of I-229 & I-90
- 60th Street North frontage available

FOR MORE INFORMATION CALL 605-223-1066

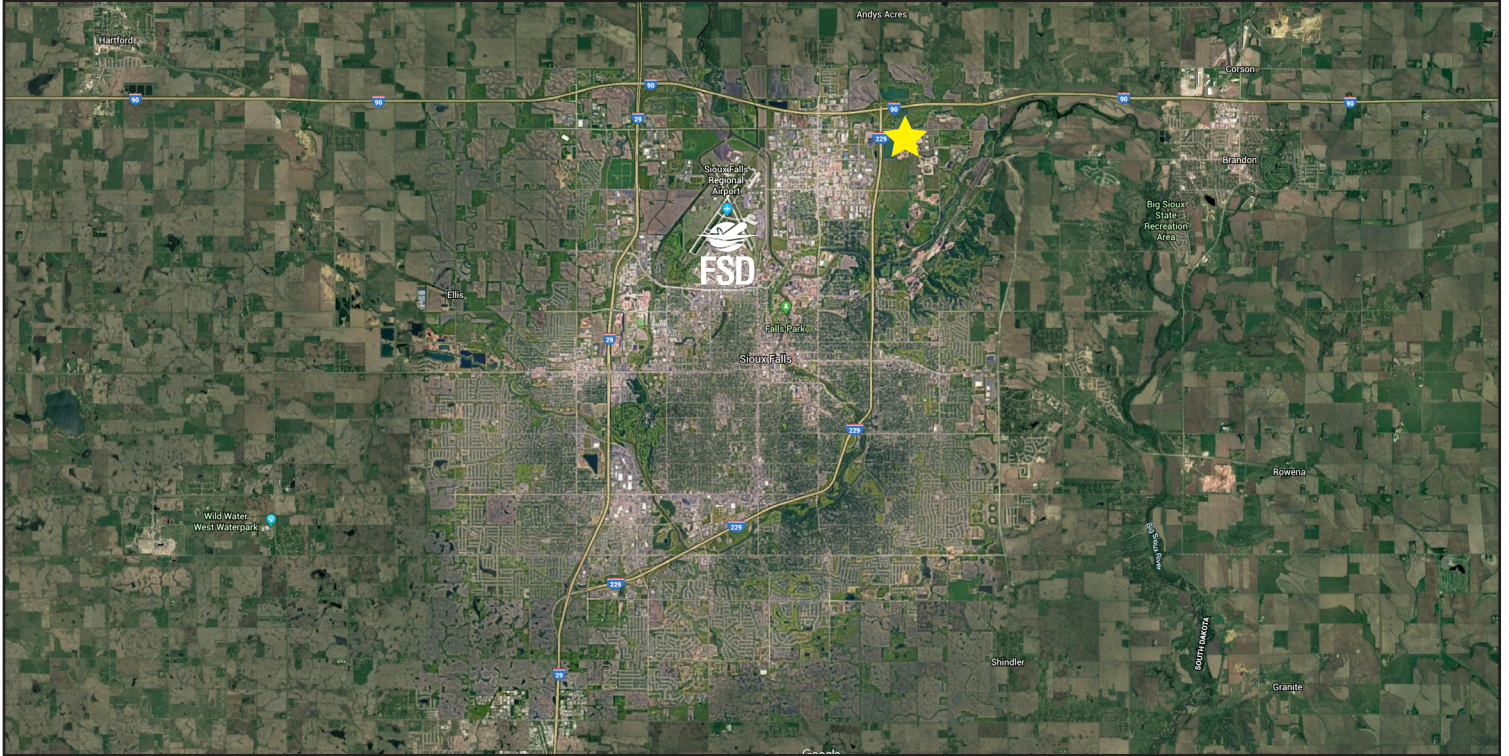
SIOUX EMPIRE DEVELOPMENT PARK PARK VIII - WEST

Sioux Falls, South Dakota



SIoux EMPIRE DEVELOPMENT PARK PARK VIII - WEST

Sioux Falls, South Dakota



605.339.0103

siouxfallsdevelopment.com

DEAN DZIEDZIC
Vice President of Economic Development
deand@siouxfalls.com

BOB MUNDT
President/CEO of Economic Development
bobm@siouxfalls.com



605.336.7600

benderco.com

**ROB FAGNAN,
SIOR**
Principal – Industrial & Land Markets
rob@benderco.com

**MICHAEL BENDER,
CCIM, SIOR**
Principal – Office & Land Markets
michael@benderco.com



605.357.7100

siouxfallscommercial.com

**GREGG BROWN,
MBA, SIOR**
Senior Vice President/Managing Director
gbrown@naisiouxfalls.com

**DENNIS BRESKE,
CCIM, SIOR, MBA**
Senior Vice President
dbreske@naisiouxfalls.com