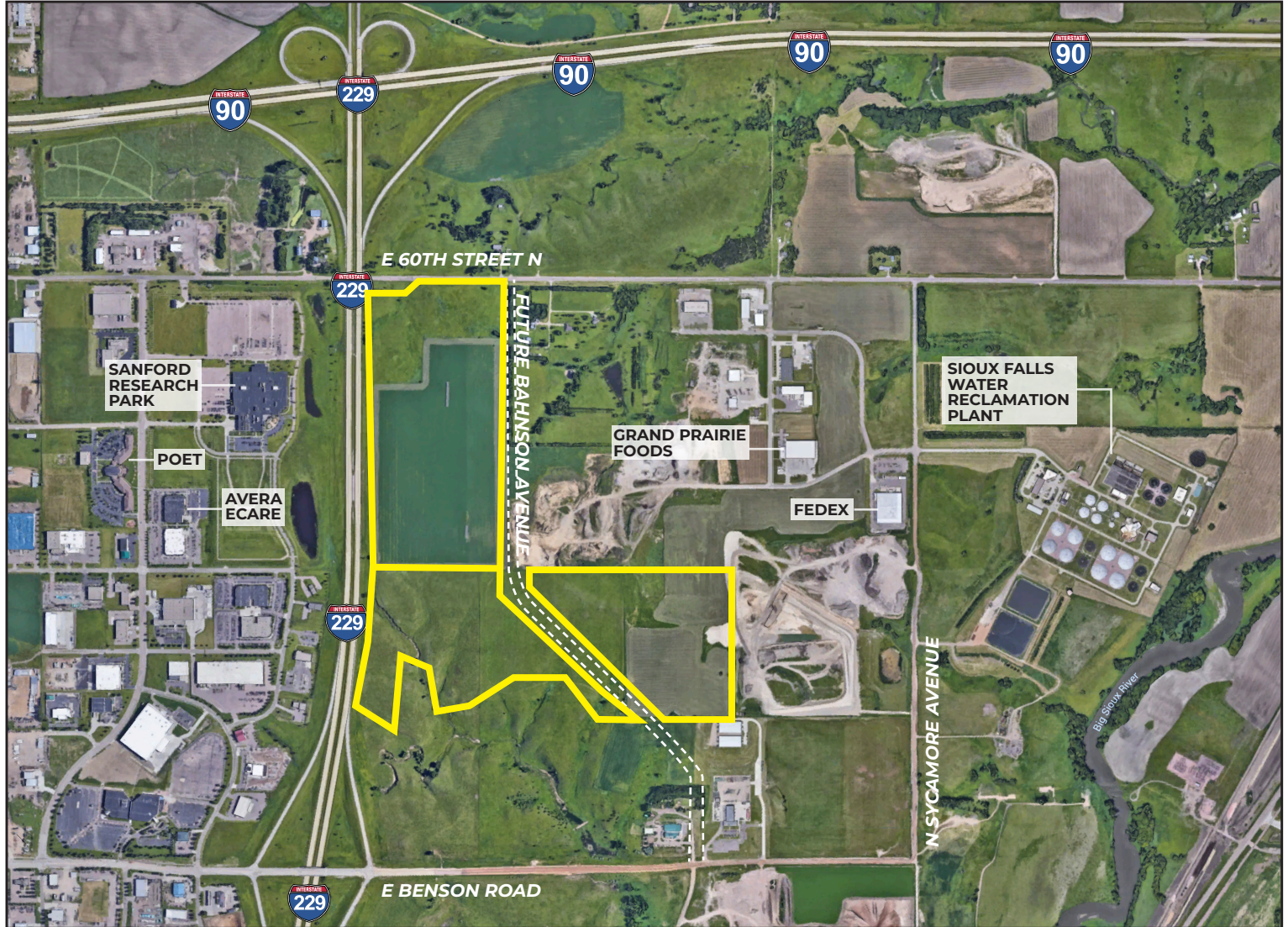


## SIOUX EMPIRE DEVELOPMENT PARK PARK VIII - WEST

Sioux Falls, South Dakota



### PROPERTY FEATURES

- Protective covenants in place
- Zoned I-1 for light industrial
- Utilities under development
- On-site detention (BMP) required
- Range of 5-75 acre sites available
- Subdividable or combined

### PRICING

- Starting at \$4.00 psf

### LOCATION

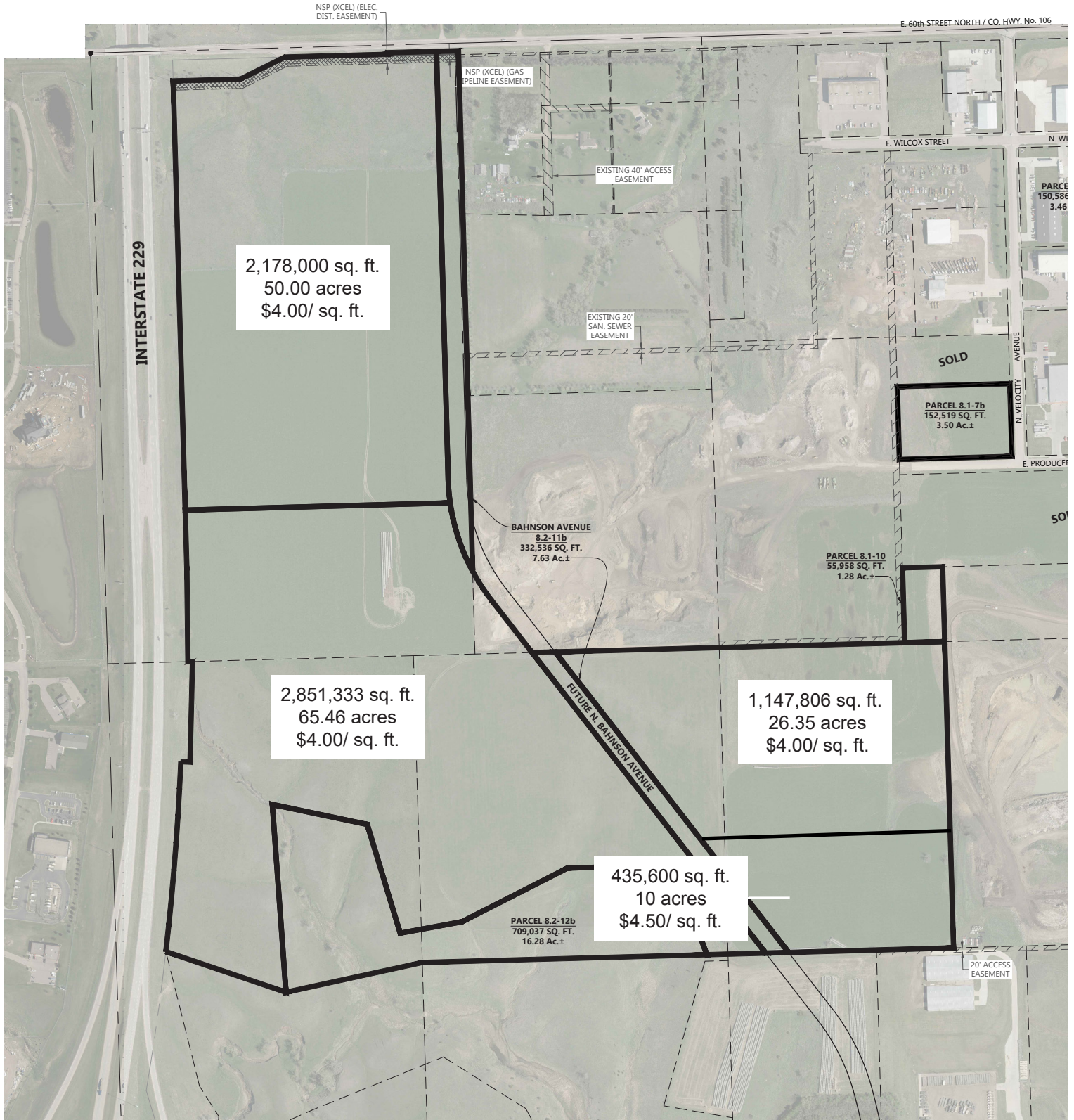
- Minutes from Sioux Falls Regional Airport (FSD)
- Located near the intersection of I-229 & I-90
- 60th Street North frontage available

**FOR MORE INFORMATION CALL 605-223-1066**



## SIOUX EMPIRE DEVELOPMENT PARK PARK VIII - WEST

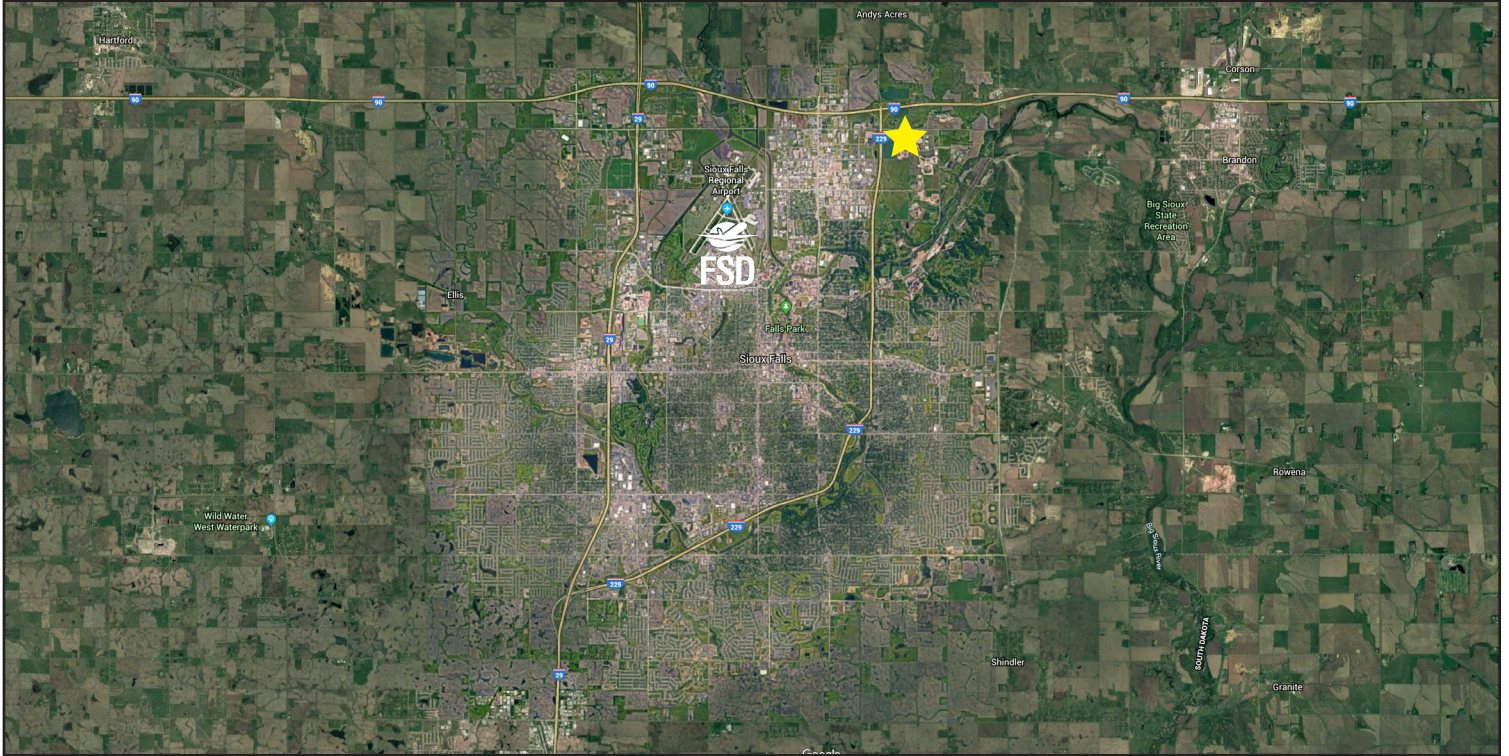
Sioux Falls, South Dakota





## SIoux EMPIRE DEVELOPMENT PARK PARK VIII - WEST

Sioux Falls, South Dakota



605.339.0103

siouxfallsdevelopment.com

**DEAN DZIEDZIC**  
*Vice President of Economic Development*  
deand@siouxfalls.com

**BOB MUNDT**  
*President/CEO of Economic Development*  
bobm@siouxfalls.com



605.336.7600

benderco.com

**ROB FAGNAN, SIOR**  
*Principal – Industrial & Land Markets*  
rob@benderco.com

**MICHAEL BENDER, CCIM, SIOR**  
*Principal – Office & Land Markets*  
michael@benderco.com



605.357.7100

siouxfallscommercial.com

**GREGG BROWN, MBA, SIOR**  
*Senior Vice President/Managing Director*  
gbrown@naisiouxfalls.com

**DENNIS BRESKE, CCIM, SIOR, MBA**  
*Senior Vice President*  
dbreske@naisiouxfalls.com