



Peska Canton Built-to-Suit TBD Highway 18, Canton, SD

Property Features

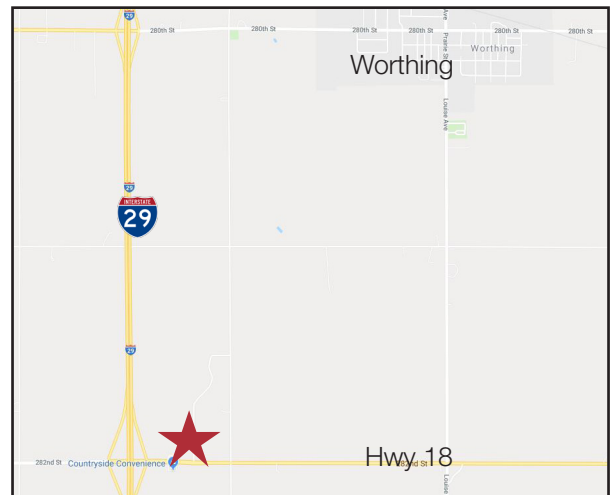
- Various lot sizes available
- Proposed lot layout above
- Zoning: I-1
- Built-to-suit contact broker

Pricing

- List price: \$2.85 - \$3.25/ sq. ft. - ask broker for details

Location

- Just east of I-29 on Highway 18
- Area neighbors include: South Dakota DOT, Countryside Campground, Cenex, LSE Manufacturing, Inc., MH Eby, Inc.

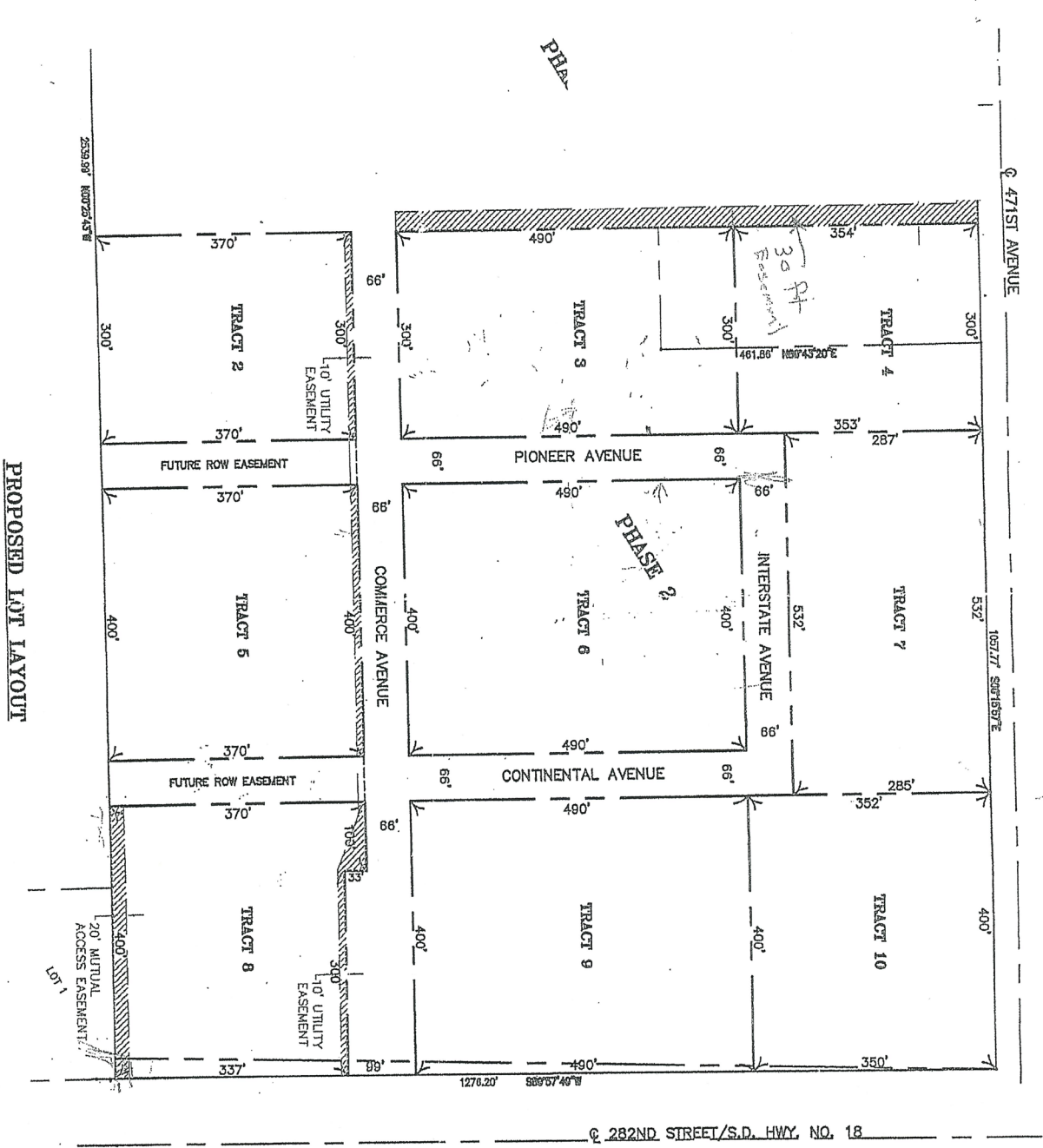


For more information:

Bill Connelly

+1 605 254 2360 • bconnelly@naisiouxfalls.com

For Sale Commercial Land



PROPOSED LOT LAYOUT

NOTE:
A BOUNDARY SURVEY WAS NOT CONDUCTED. PROPERTY PINS SHOWN AS FOUND WERE NOT VERIFIED. PROPERTY LINES SHOWN ARE APPROXIMATE ONLY AND SHOULD NOT BE USED FOR CONSTRUCTION PURPOSES.

I, RAYMOND M. PIER WAS PREPARED BY THAT I AM A DUTY THE STATE OF SD DATE:



2500 W. 49th Street, Suite 100
Sioux Falls SD 57105
+1 605 357 7100
naisiouxfalls.com