



## Peska Canton Built-to-Suit TBD Highway 18, Canton, SD

### Property Features

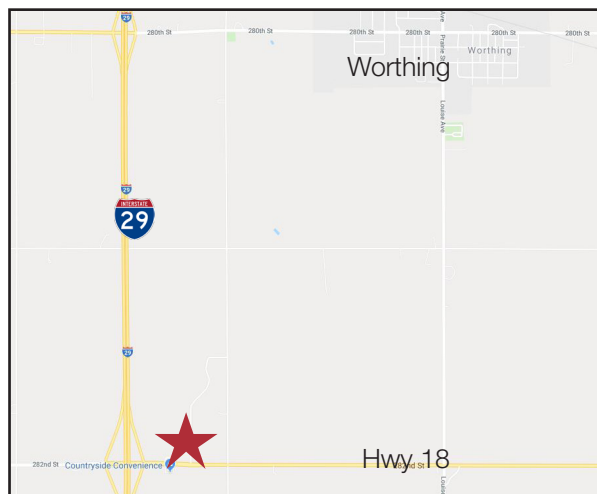
- Various lot sizes available
- Proposed lot layout above
- Zoning: I-1
- Built-to-suit contact broker

### Pricing

- List price: \$3.00 - \$3.50/ sq. ft. - ask broker for details

### Location

- Just east of I-29 on Highway 18
- Area neighbors include: South Dakota DOT, Countryside Campground, Cenex, LSE Manufacturing, Inc., MH Eby, Inc.



For more information:

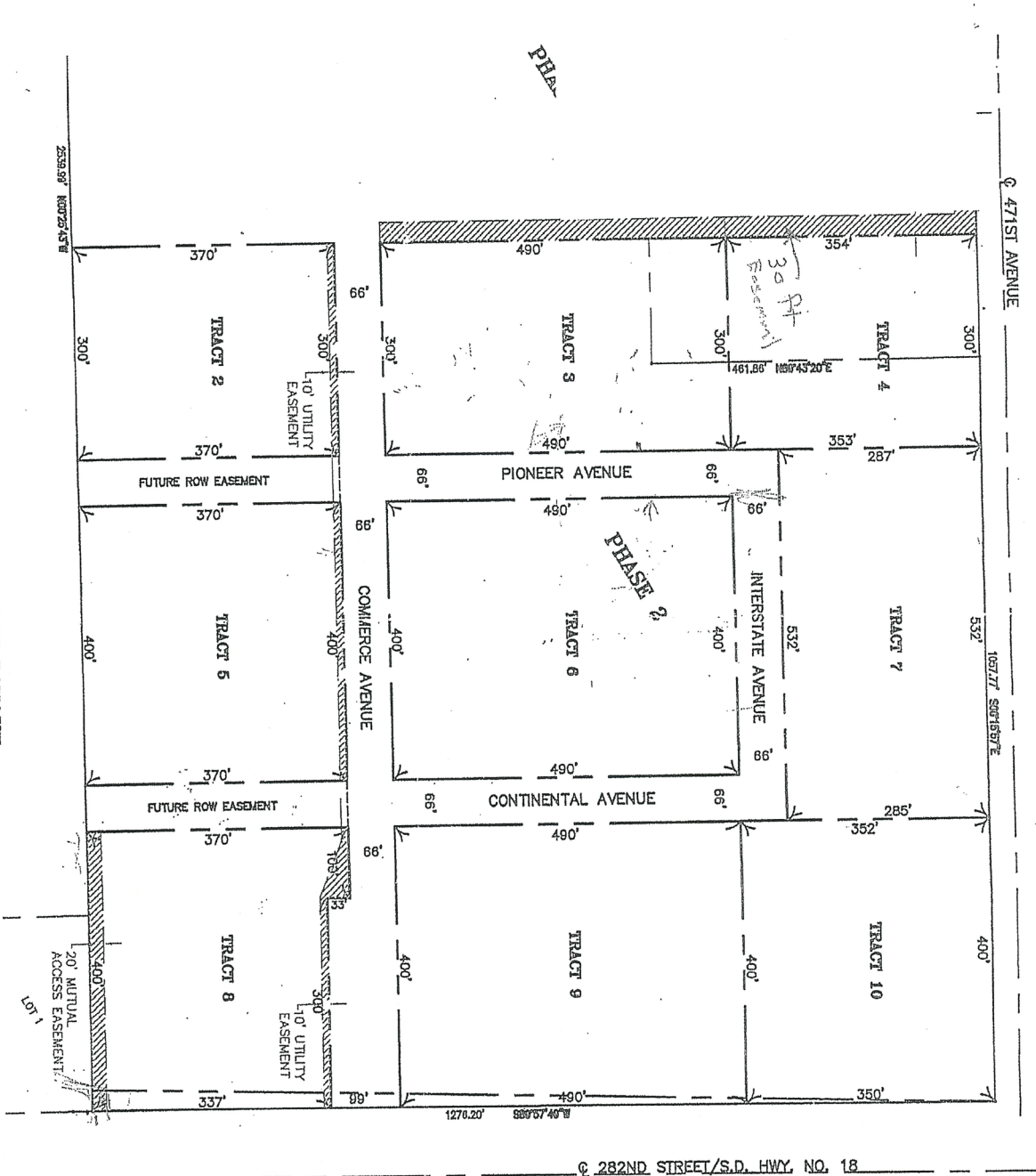
**Bill Connolly**

+1 605 254 2360 • [bconnelly@naisiouxfalls.com](mailto:bconnelly@naisiouxfalls.com)

NO WARRANTY OR REPRESENTATION, EXPRESS OR IMPLIED, IS MADE AS TO THE ACCURACY OF THE INFORMATION CONTAINED HEREIN, AND THE SAME IS SUBMITTED SUBJECT TO ERRORS, OMISSIONS, CHANGE OF PRICE, RENTAL OR OTHER CONDITIONS, PRIOR SALE, LEASE OR FINANCING, OR WITHDRAWAL WITHOUT NOTICE, AND OF ANY SPECIAL LISTING CONDITIONS IMPOSED BY OUR PRINCIPALS NO WARRANTIES OR REPRESENTATIONS ARE MADE AS TO THE CONDITION OF THE PROPERTY OR ANY HAZARDS CONTAINED THEREIN ARE ANY TO BE IMPLIED.

2500 W. 49th Street Suite 100  
Sioux Falls, SD 57105  
+1 605 357 7100  
[naisiouxfalls.com](http://naisiouxfalls.com)

For Sale  
Commercial Land



NOTE: A BOUNDARY SURVEY WAS NOT CONDUCTED. PROPERTY LINES SHOWN AS FOUND WERE NOT VERIFIED. PROPERTY LINES SHOWN ARE APPROXIMATE ONLY AND SHOULD NOT BE USED FOR CONSTRUCTION PURPOSES.

I, RAYMOND M. PIERCE,  
WAS PREPARED BY  
THAT I AM A DULY  
THE STATE OF SOUTH  
DATE:

