



Southeastern Office Building

5617 S. Southeastern Avenue, Sioux Falls, SD 57108

Property Features

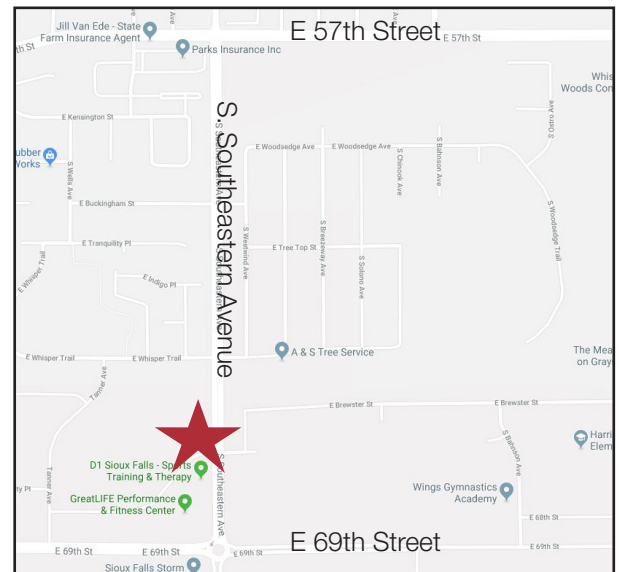
- Suite size: 1,934 sq. ft.
- **Short-term lease available**
- Rear employee parking
- Building signage
- Monument signage
- Keyless entry
- Shared restrooms
- Shared conference room
- In-suite kitchenette
- Security system
- STC-51 sound-rating for interior offices
- Owner is a licensed Real Estate Broker in South Dakota

Pricing

- Lease rate: \$17.75/ sq. ft. NNN
- Estimated NNN expenses: \$6.62/ sq. ft.

Location

- Located just north of the roundabout of 69th Street & S. Southeastern Avenue
- Area neighbors include: GreatLife Performance & Fitness, Sioux Falls Christian Schools, Harrisburg Horizon Elementary School, Wings Gymnastics Academy

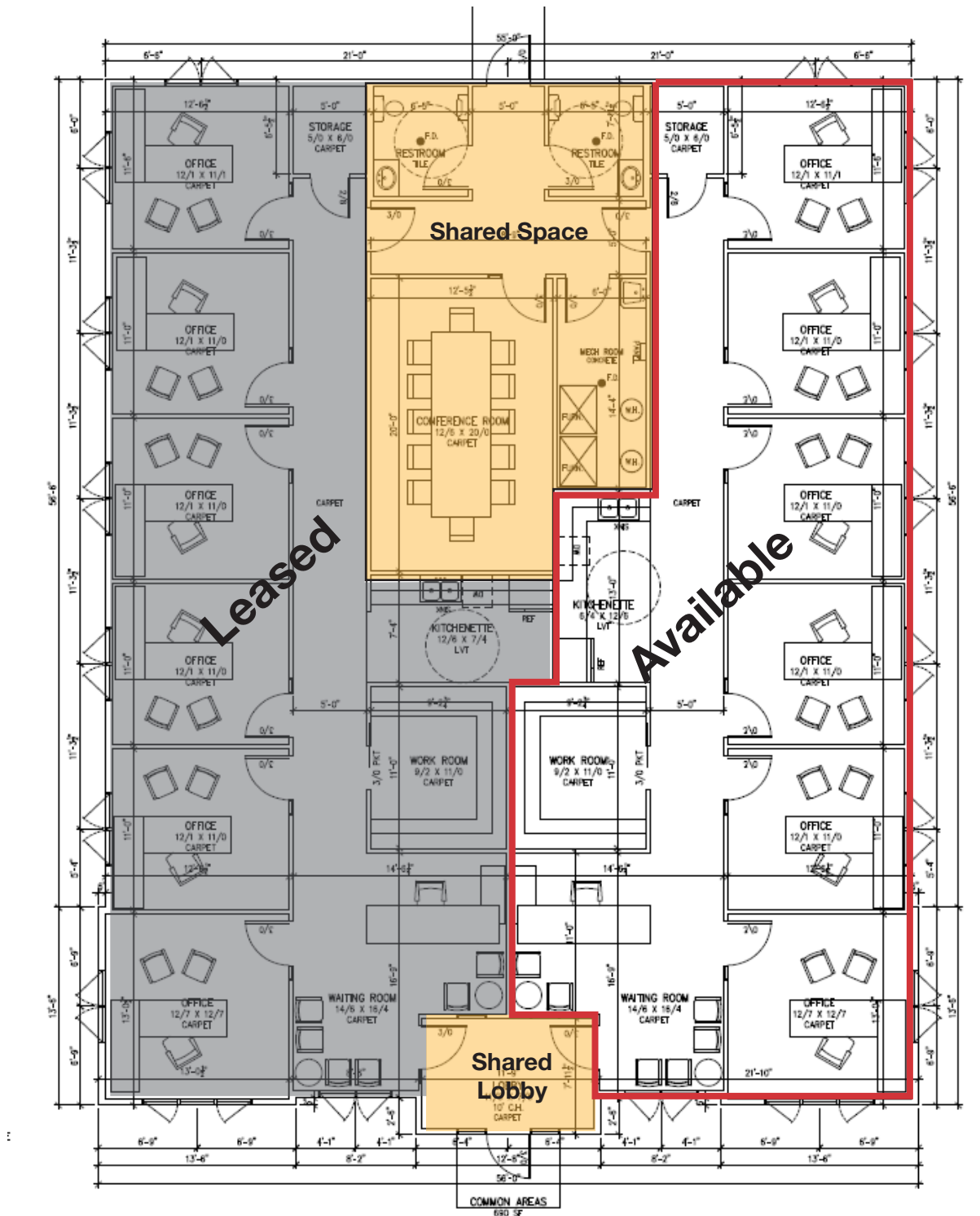


Michael Martin, CCIM
+1 605 261 2777 mobile
+1 605 444 7105 direct
mmartin@naisiouxfalls.com



Co-Listed - Lee Schelling
Hegg Realtors
+ 1 605 254 3632 Cell
leeschelling@hegg.com

For Lease
Office Suite



For Lease
Office Suite



For Lease
Office Suite

