



## 408 W. Lotta Street

Sioux Falls, SD 57105

### Property Features

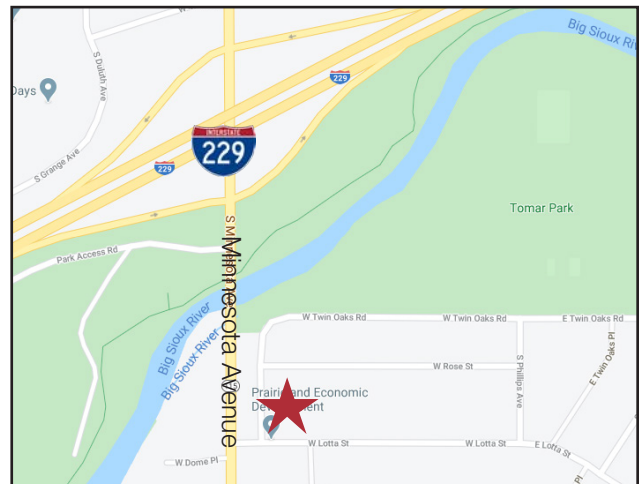
- Suite 2: 1,996 RSF
- Available within 30 days
- Conference room
- Two window offices
- Open area for cubicles
- Shared break room
- Monument signage available
- Paved, on-site parking

### Pricing

- Suite 2: \$2,250/ month gross plus utilities

### Location

- Located south of Tomar Park on W. Lotta
- Easy access to S. Minnesota and I-229
- Neighbors include Frisbee's Plumbing & Heating, Heritage Funeral Home & First National Bank



For more information:

**Gregg Brown, MBA, SIOR**

+1 605 906 0394 • [gbrown@naisiouxfalls.com](mailto:gbrown@naisiouxfalls.com)

**Stacey Sieverding**

+1 605 728 1390 • [ssieverding@naisiouxfalls.com](mailto:ssieverding@naisiouxfalls.com)

NO WARRANTY OR REPRESENTATION, EXPRESS OR IMPLIED, IS MADE AS TO THE ACCURACY OF THE INFORMATION CONTAINED HEREIN, AND THE SAME IS SUBMITTED SUBJECT TO ERRORS, OMISSIONS, CHANGE OF PRICE, RENTAL OR OTHER CONDITIONS, PRIOR SALE, LEASE OR FINANCING, OR WITHDRAWAL WITHOUT NOTICE, AND OF ANY SPECIAL LISTING CONDITIONS IMPOSED BY OUR PRINCIPALS NO WARRANTIES OR REPRESENTATIONS ARE MADE AS TO THE CONDITION OF THE PROPERTY OR ANY HAZARDS CONTAINED THEREIN ARE ANY TO BE IMPLIED.

2500 W. 49th Street Suite 100  
Sioux Falls, SD 57105  
+1 605 357 7100  
[naisiouxfalls.com](http://naisiouxfalls.com)

# FOR LEASE

Suite 2



**NA** Sioux Falls

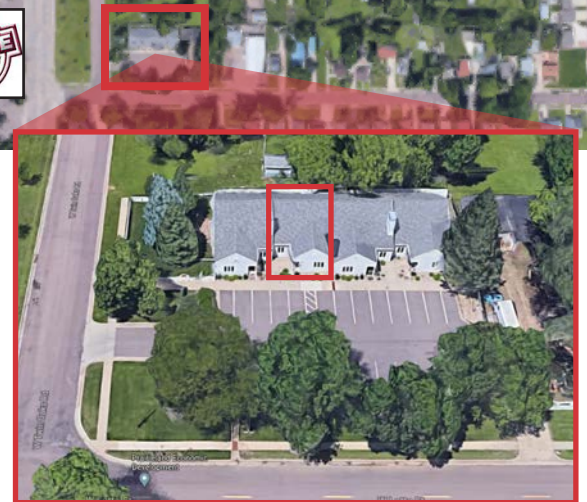
2500 W. 49th Street Suite 100  
Sioux Falls, SD 57105  
+1 605 357 7100  
[naisiouxfalls.com](http://naisiouxfalls.com)







# FOR LEASE



## NAI Sioux Falls

2500 W. 49th Street Suite 100  
Sioux Falls, SD 57105  
+1 605 357 7100  
naisiouxfalls.com