



1117 S Langdon Street
Mitchell, SD 57301

Property Features

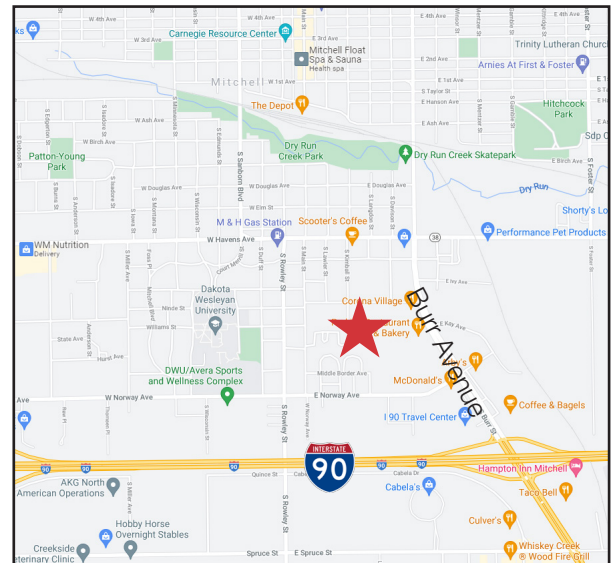
- Building size: 17,384 sq. ft. total
- 15,000 sq. ft. shop/warehouse
- 2,384 sq. ft. office
- Year built: 2008
- Lot size: 1.02 acres
- 21' sidewalls
- 5 ton crane
- 8" - 12" concrete floors
- LED lighting
- In-floor heat
- 3 Phase power
- 12' x 16' overhead door
- One dock door
- New roof this spring

Pricing

- Lease rate: \$6.00/ sq. ft. NNN
- Average utilities: \$485/ month

Location

- Located just west of Burr Street in Mitchell, SD
- Area neighbors include: Patzer Woodworking, Perkins



For more information:

Troy Fawcett, CCIM, SIOR

+1 605 321 2199 • tfawcett@naisiouxfalls.com

NO WARRANTY OR REPRESENTATION, EXPRESS OR IMPLIED, IS MADE AS TO THE ACCURACY OF THE INFORMATION CONTAINED HEREIN, AND THE SAME IS SUBMITTED SUBJECT TO ERRORS, OMISSIONS, CHANGE OF PRICE, RENTAL OR OTHER CONDITIONS, PRIOR SALE, LEASE OR FINANCING, OR WITHDRAWAL WITHOUT NOTICE, AND OF ANY SPECIAL LISTING CONDITIONS IMPOSED BY OUR PRINCIPALS NO WARRANTIES OR REPRESENTATIONS ARE MADE AS TO THE CONDITION OF THE PROPERTY OR ANY HAZARDS CONTAINED THEREIN ARE ANY TO BE IMPLIED.

2500 W. 49th Street Suite 100
Sioux Falls, SD 57105
+1 605 357 7100
naisiouxfalls.com

FOR LEASE



NAI Sioux Falls

2500 W. 49th Street Suite 100
Sioux Falls, SD 57105
+1 605 357 7100
naisiouxfalls.com

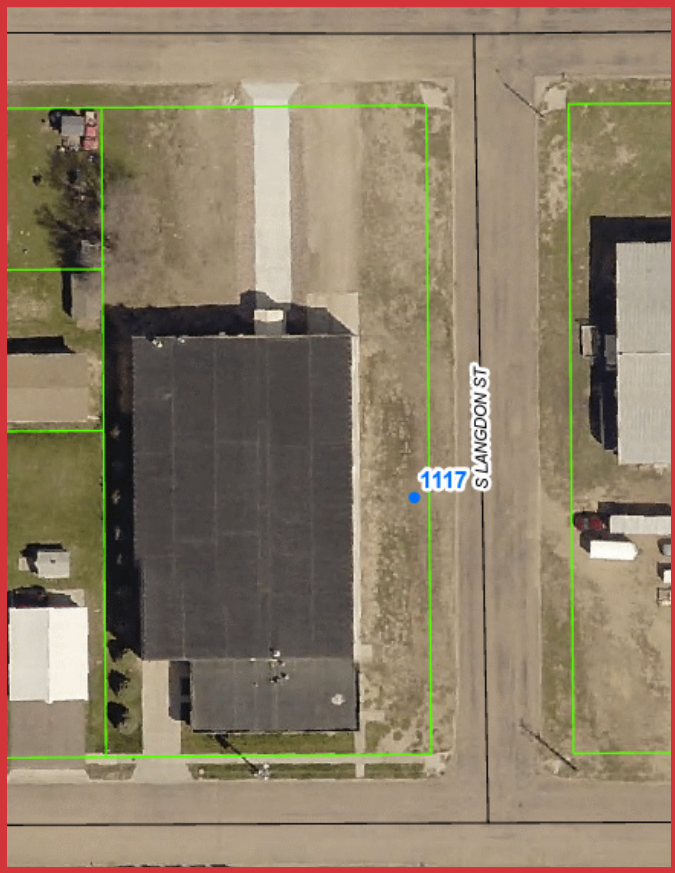
FOR LEASE



NAI Sioux Falls

2500 W. 49th Street Suite 100
Sioux Falls, SD 57105
+1 605 357 7100
naisiouxfalls.com

FOR LEASE



NASioux Falls

2500 W. 49th Street Suite 100
Sioux Falls, SD 57105
+1 605 357 7100
naisiouxfalls.com

FOR LEASE

