

Commercial Land



Veterans Parkway & Madison Street Sioux Falls, SD 57110

Property Features

- Development land on Highway 100, south of the new I-90 exit
- Zoning: Commercial (C-2)
- 3.76 acres remain

Pricing

- List Price: \$10.00/ sq. ft.

Location

- North of Madison Street on Highway 100
- Area neighbors include: Foss Fields Development, Issac Walton, Menards, Dawley Farms

Craig Hagen, CCIM, SIOR
Senior Vice President

605 310 4227 • chagen@naisiouxfalls.com

Gregg Brown, MBA, SIOR
Senior Vice President, Managing Director

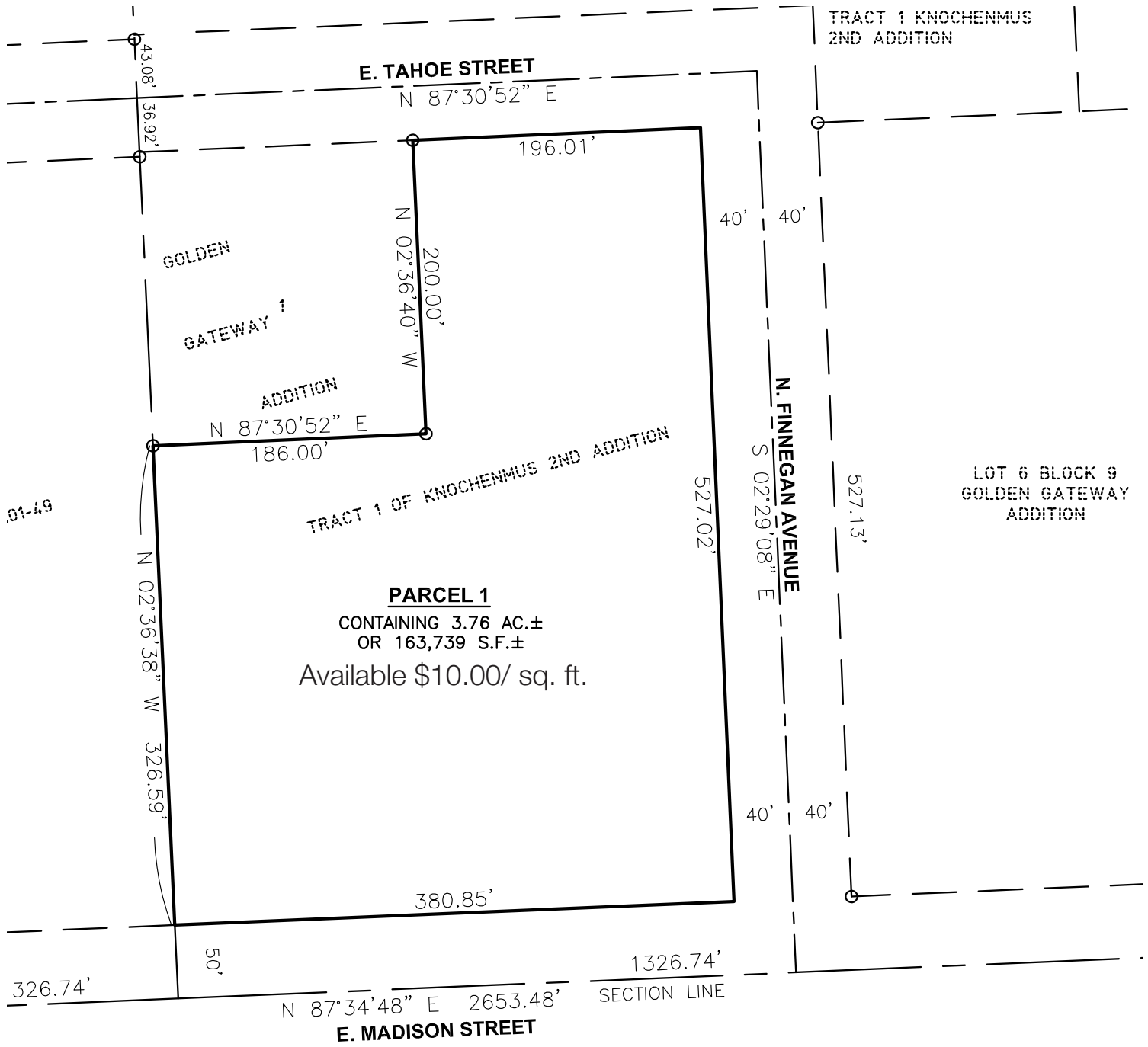
605 906 0394 • gbrown@naisiouxfalls.com

NO WARRANTY OR REPRESENTATION, EXPRESS OR IMPLIED, IS MADE AS TO THE ACCURACY OF THE INFORMATION CONTAINED HEREIN, AND THE SAME IS SUBMITTED SUBJECT TO ERRORS, OMISSIONS, CHANGE OF PRICE, RENTAL OR OTHER CONDITIONS, PRIOR SALE, LEASE OR FINANCING, OR WITHDRAWAL WITHOUT NOTICE, AND OF ANY SPECIAL LISTING CONDITIONS IMPOSED BY OUR PRINCIPALS NO WARRANTIES OR REPRESENTATIONS ARE MADE AS TO THE CONDITION OF THE PROPERTY OR ANY HAZARDS CONTAINED THEREIN ARE ANY TO BE IMPLIED.

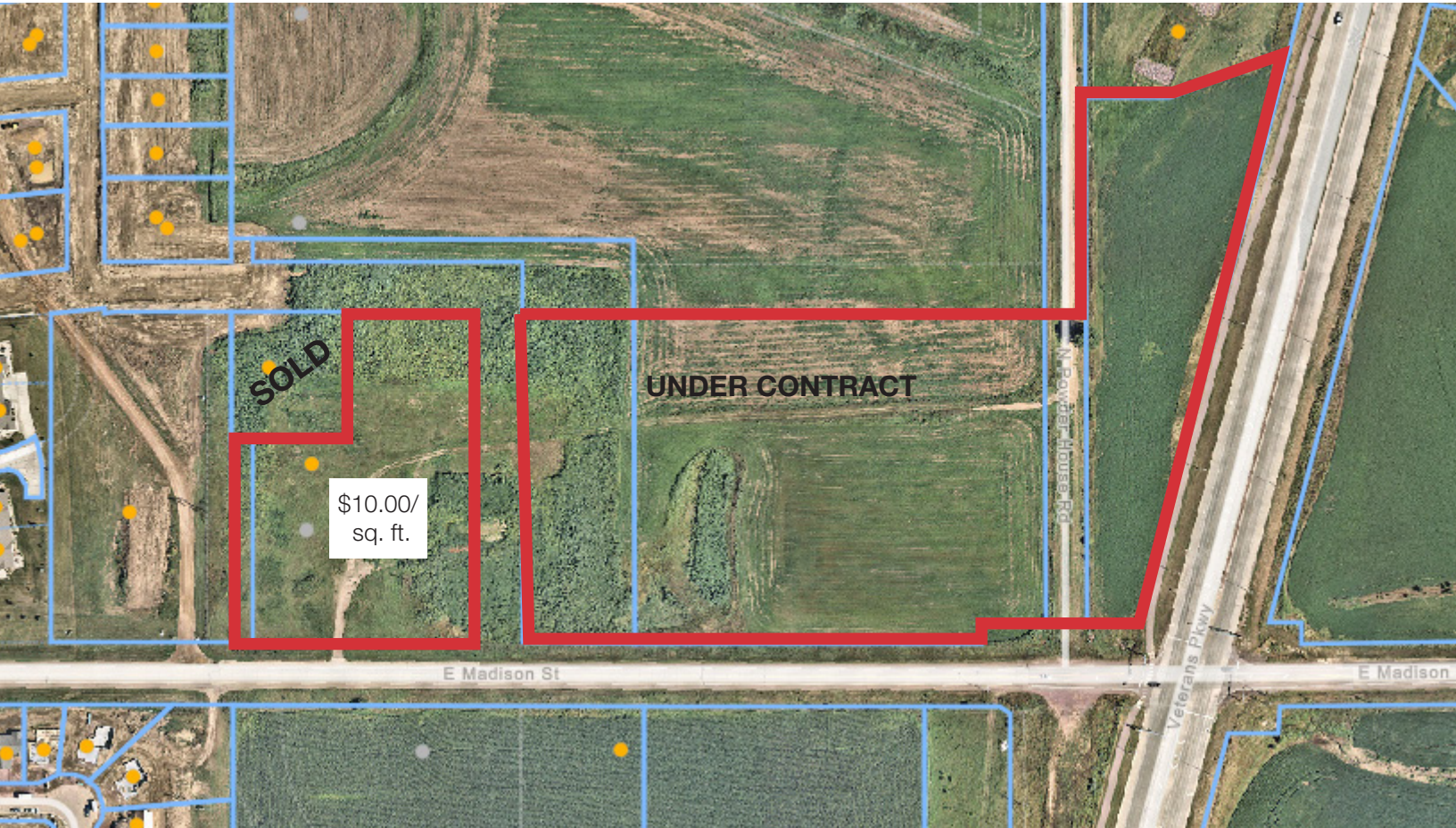
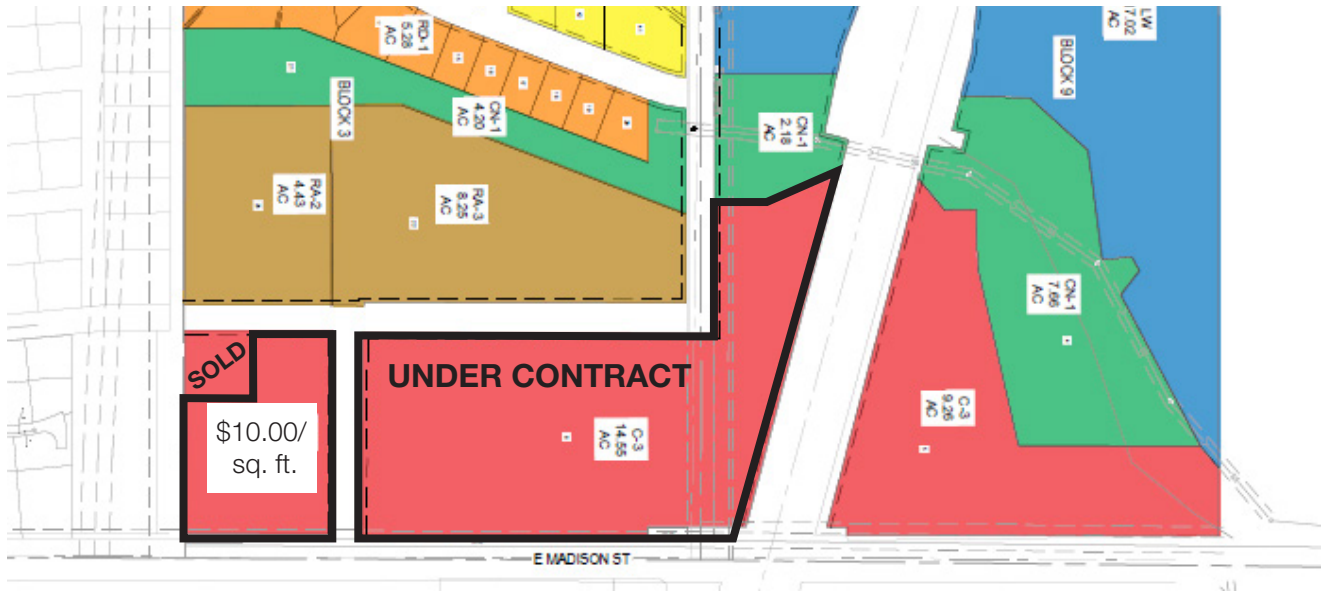
2500 W. 49th Street Suite 100
Sioux Falls, SD 57105
+1 605 357 7100

naisiouxfalls.com

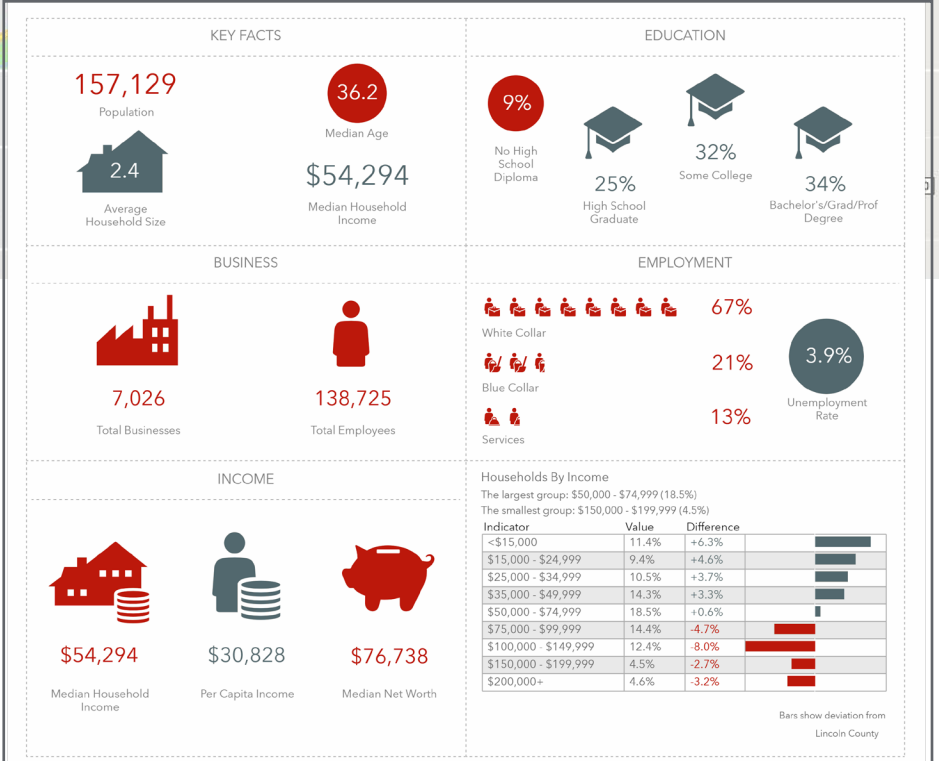
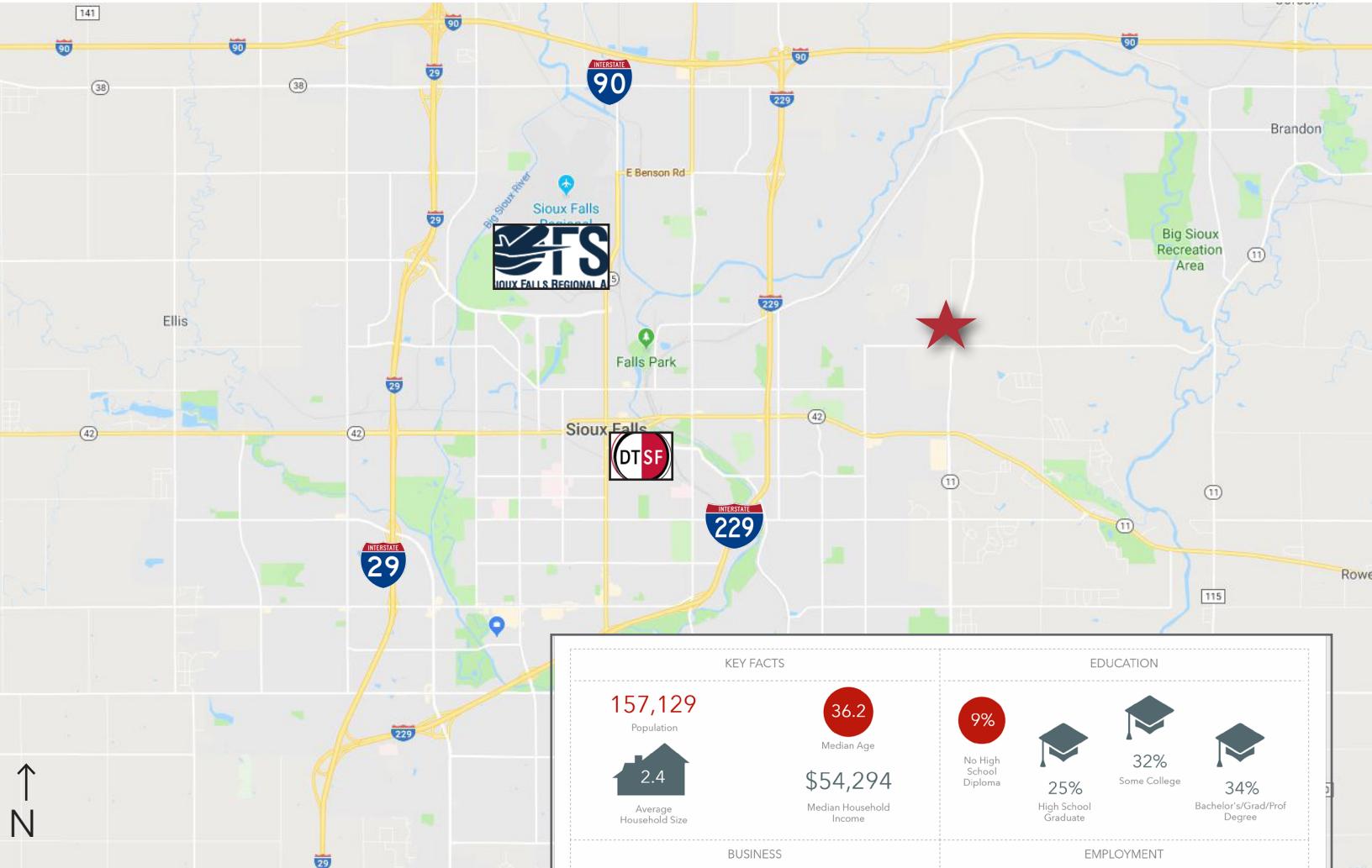
FOR SALE



FOR SALE



FOR SALE



FOR SALE

