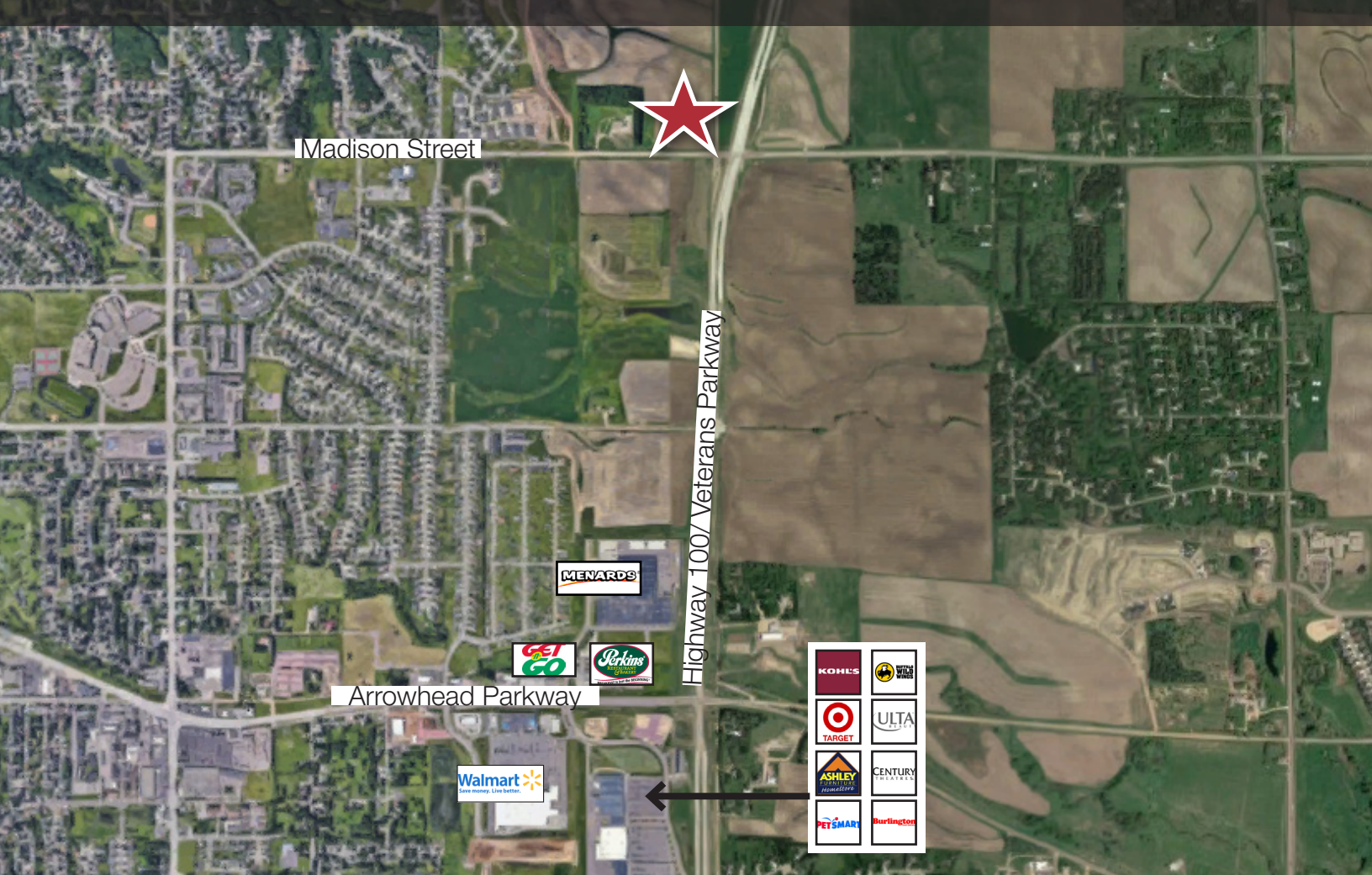


## Commercial Land



## Veterans Parkway & Madison Street Sioux Falls, SD 57110

### Property Features

- Development land on Highway 100, south of the new I-90 exit
- Zoning: Commercial
- Various lots remain, see page 2 for details

### Pricing

- Commercial [C-3]: \$12.00/ sq. ft.
- Live/Work [LW]: \$6.00 - \$8.00/ sq. ft.

### Location

- North of Madison Street on Highway 100
- Area neighbors include: Foss Fields Development, Issac Walton, Menards, Dawley Farms

**Craig Hagen, CCIM, SIOR**  
Senior Vice President

605 310 4227 • [chagen@naisiouxfalls.com](mailto:chagen@naisiouxfalls.com)

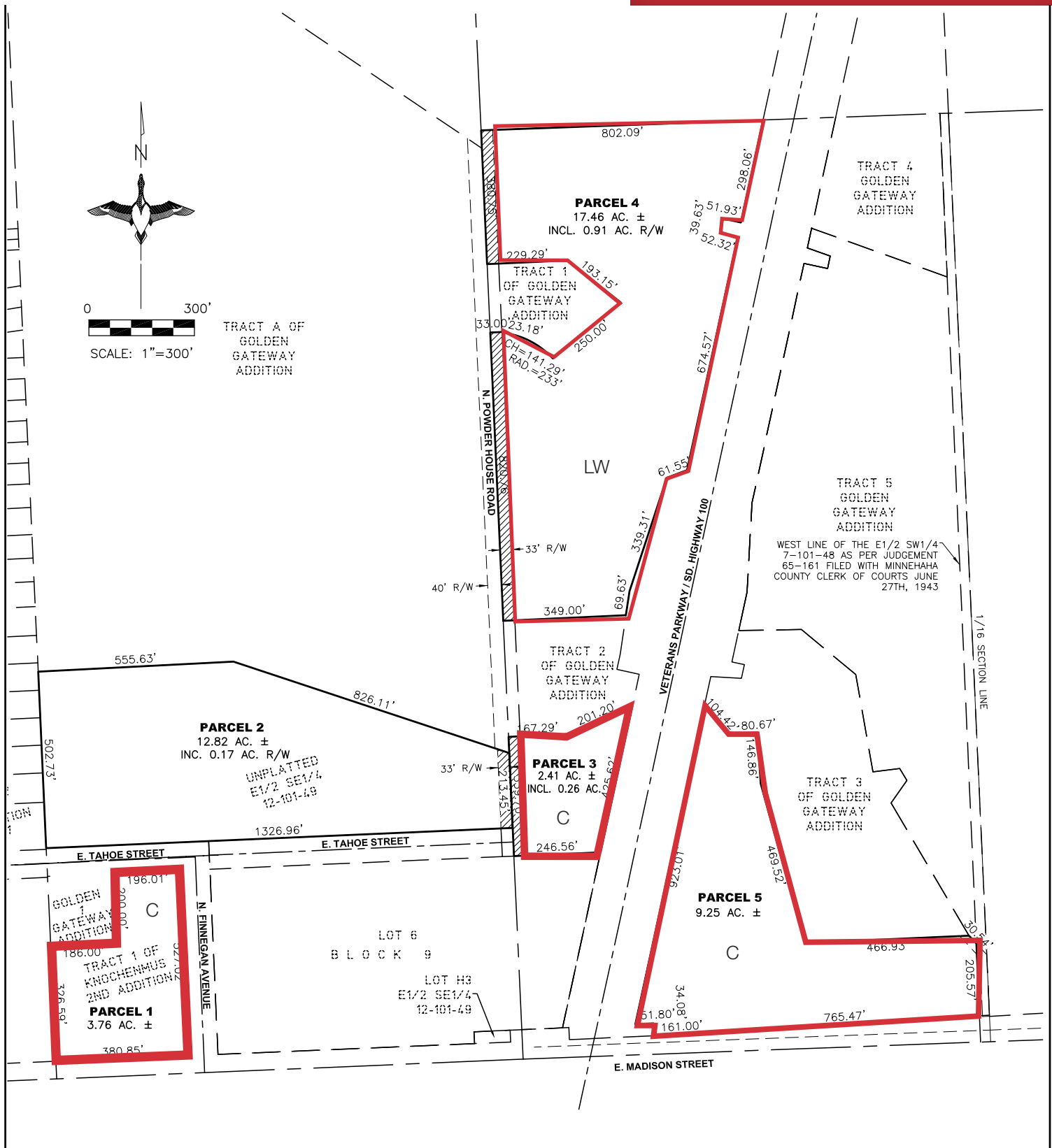
**Gregg Brown, MBA, SIOR**  
Senior Vice President, Managing Director

605 906 0394 • [gbrown@naisiouxfalls.com](mailto:gbrown@naisiouxfalls.com)

NO WARRANTY OR REPRESENTATION, EXPRESS OR IMPLIED, IS MADE AS TO THE ACCURACY OF THE INFORMATION CONTAINED HEREIN, AND THE SAME IS SUBMITTED SUBJECT TO ERRORS, OMISSIONS, CHANGE OF PRICE, RENTAL OR OTHER CONDITIONS, PRIOR SALE, LEASE OR FINANCING, OR WITHDRAWAL WITHOUT NOTICE, AND OF ANY SPECIAL LISTING CONDITIONS IMPOSED BY OUR PRINCIPALS NO WARRANTIES OR REPRESENTATIONS ARE MADE AS TO THE CONDITION OF THE PROPERTY OR ANY HAZARDS CONTAINED THEREIN ARE ANY TO BE IMPLIED.

2500 W. 49th Street Suite 100  
Sioux Falls, SD 57105  
+1 605 357 7100  
[naisiouxfalls.com](http://naisiouxfalls.com)

# FOR SALE

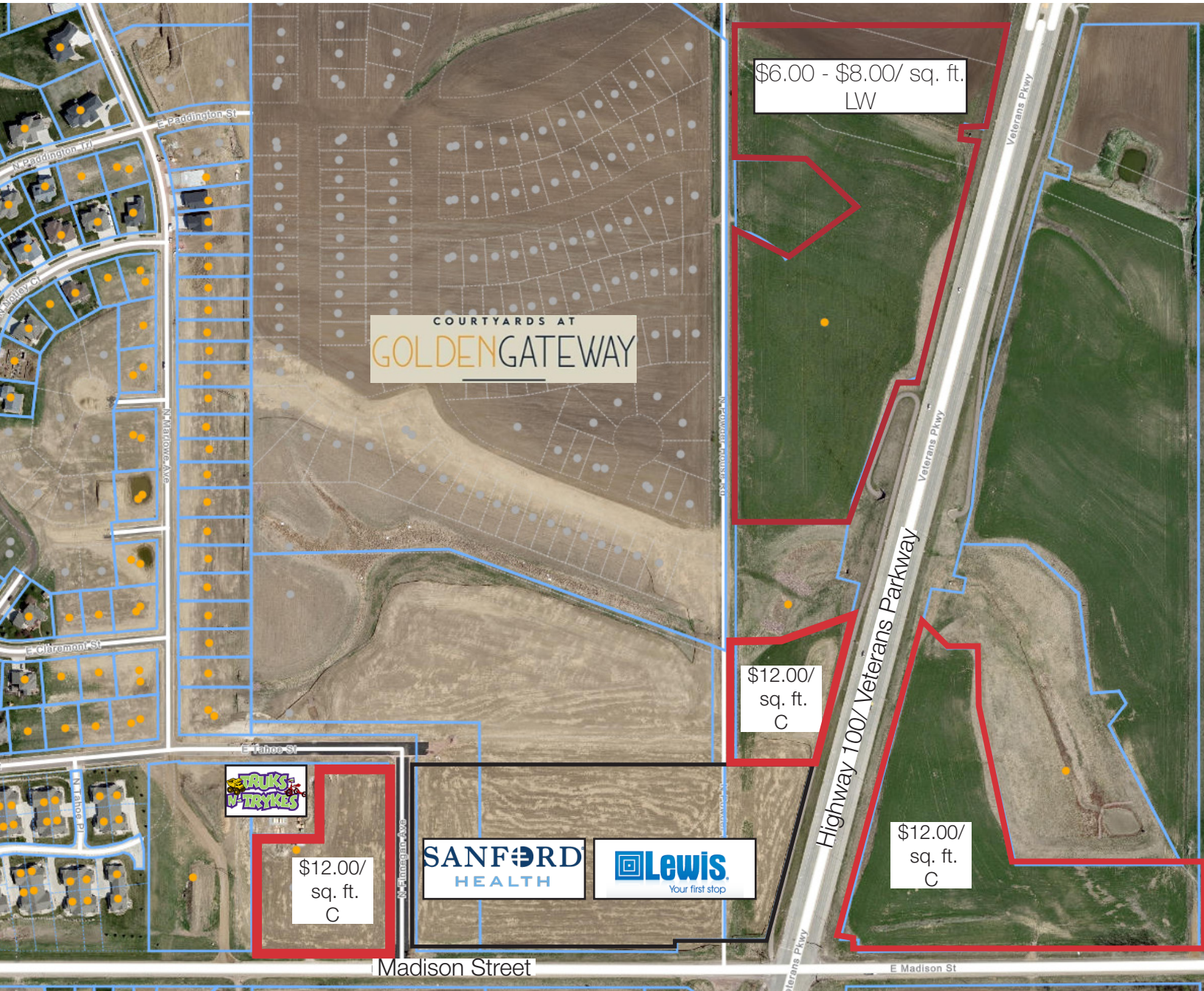




# FOR SALE



New Brandon Valley Elementary School  
located just north



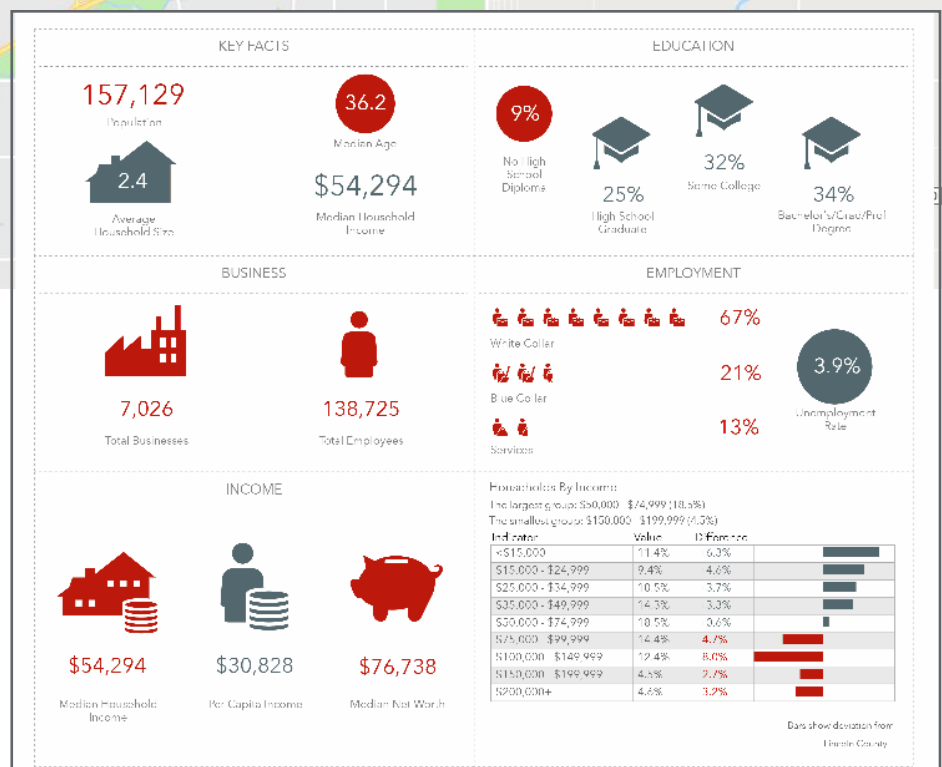
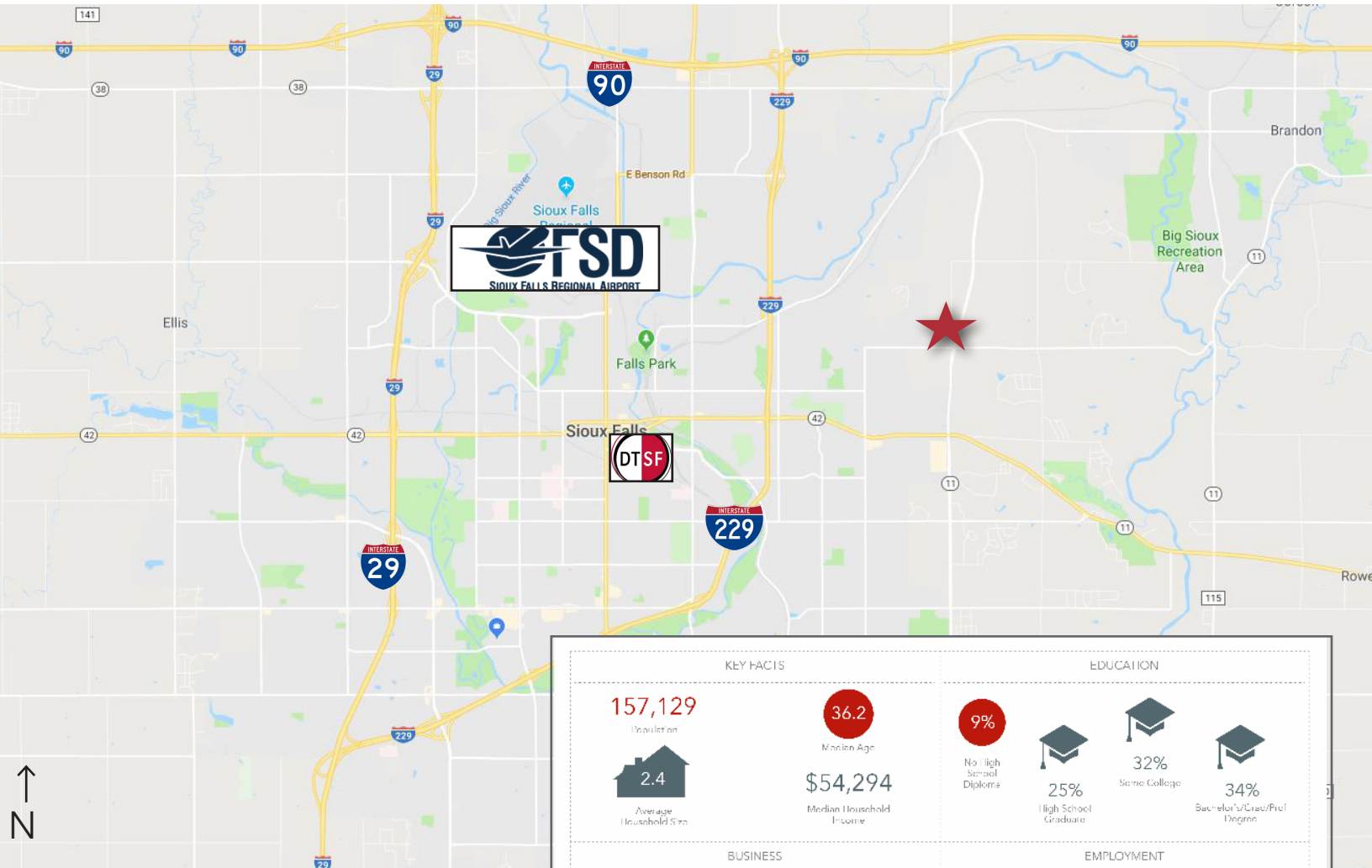
# FOR SALE



2500 W. 49th Street Suite 100  
Sioux Falls, SD 57105  
+1 605 357 7100  
[naisiouxfalls.com](http://naisiouxfalls.com)



# FOR SALE



# FOR SALE

