



101 E. 38th Street
Sioux Falls, SD 57105

Property Features

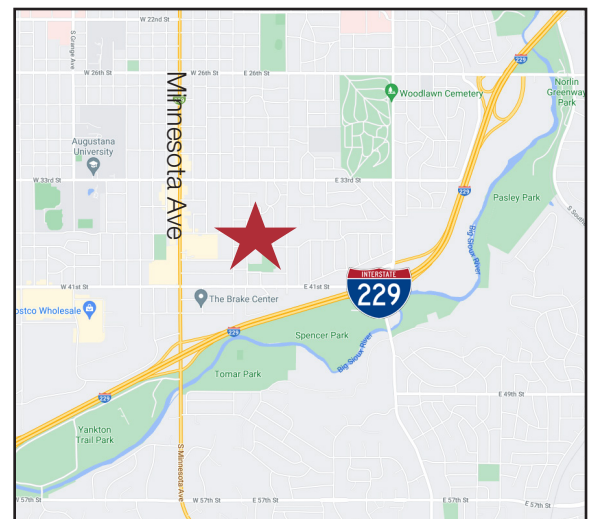
- Efficient office building for sale in central Sioux Falls
- Building size: 2,128 sq. ft.
- Year built: 1970
- Split level office building
- Upper level: 1,064 sq. ft.
- Lower level: 1,064 sq. ft.
- Lot size: 0.23 acres (10,000 sq. ft.)
- Full renovation and new HVAC 2018
- Lower level features natural light with sub-surface windows
- On-site parking
- Available September 1, 2021

Pricing

- List price: \$325,000 (\$152.72/ sq. ft.)
- 2020 real estate taxes: \$3,166.08

Location

- Located just to the east of Hy-Vee off Minnesota Ave
- Area neighbors include: ABC Rentals, Instructional Planning Center, Robert Frost Elementary School

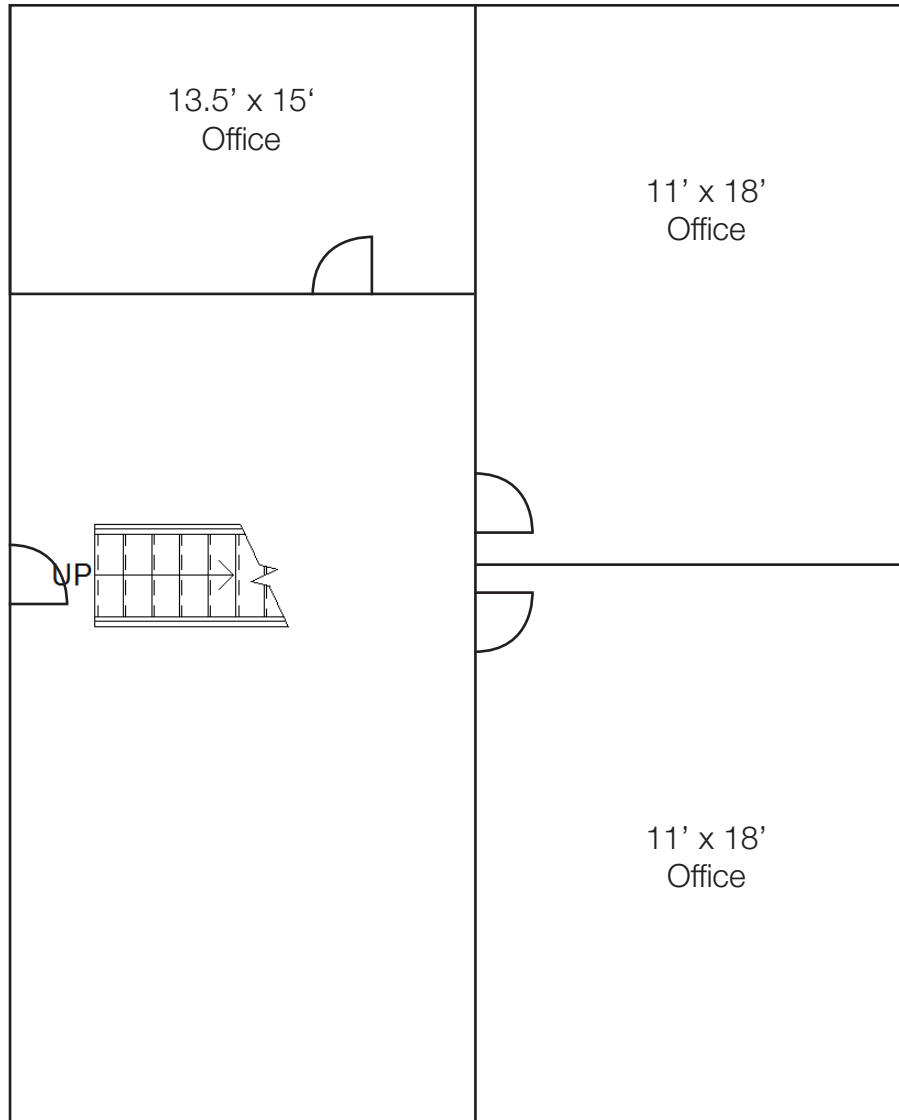


Dennis Breske, MBA, CCIM, SIOR
Senior Vice President
605 310 6666 • dbreske@naisiouxfalls.com

Marcus Mahlen, CCIM
Senior Vice President
605 228 9744 • mmahlen@naisiouxfalls.com

FOR SALE

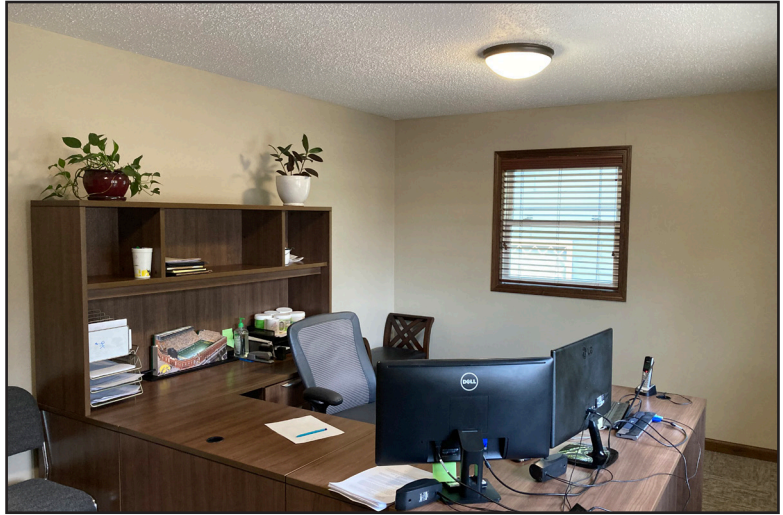
Upper Level Floor Plan



FOR SALE



FOR SALE



FOR SALE

