



Commercial Land

W. 12th Street

S. Sertoma Avenue

7101 W. 12th Street & 431 S. Sertoma Avenue
Sioux Falls, SD 57104

Property Features

- 3.67 acres (159,865 sq. ft.) on two parcels
- Zoning: C-2
- A portion of this property is in the floodplain

Pricing

- List price: \$649,000
- 2020 Real Estate Taxes: \$6,985.06

Location

- Located in the growing west side of Sioux Falls at 12th & Sertoma
- 9,900 vpd on 12th Street - 5,900 vpd on Sertoma

For more information:

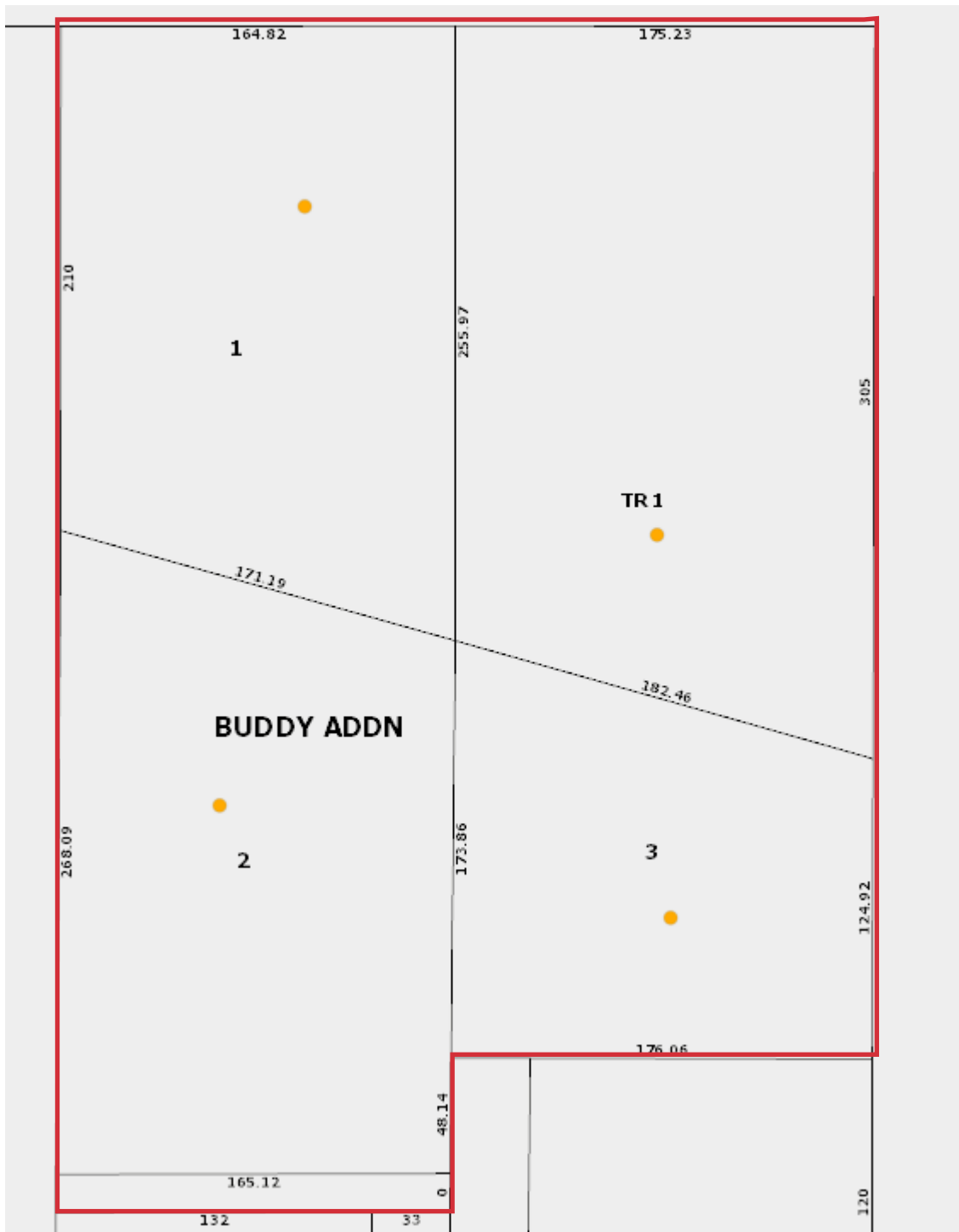
Craig Hagen, CCIM, SIOR
Senior Vice President

605 310 4227 • chagen@naisiouxfalls.com

NO WARRANTY OR REPRESENTATION, EXPRESS OR IMPLIED, IS MADE AS TO THE ACCURACY OF THE INFORMATION CONTAINED HEREIN, AND THE SAME IS SUBMITTED SUBJECT TO ERRORS, OMISSIONS, CHANGE OF PRICE, RENTAL OR OTHER CONDITIONS, PRIOR SALE, LEASE OR FINANCING, OR WITHDRAWAL WITHOUT NOTICE, AND OF ANY SPECIAL LISTING CONDITIONS IMPOSED BY OUR PRINCIPALS NO WARRANTIES OR REPRESENTATIONS ARE MADE AS TO THE CONDITION OF THE PROPERTY OR ANY HAZARDS CONTAINED THEREIN ARE ANY TO BE IMPLIED.

2500 W. 49th Street Suite 100
Sioux Falls, SD 57105
+1 605 357 7100
naisiouxfalls.com

FOR SALE



FOR SALE

