

Retail Building



2310 E. 10th Street
Sioux Falls, SD 57104

Property Features

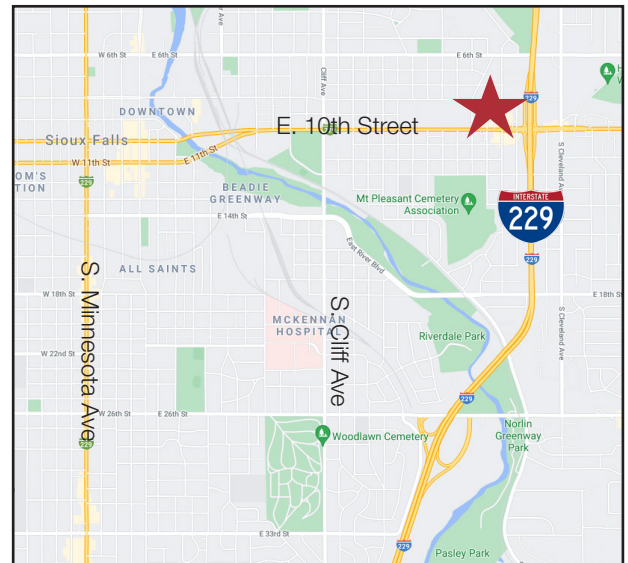
- Main Level: 5,516 sq. ft.
- Lower Level: 4,972 sq. ft.
- Total: 10,488 sq. ft.
- Lot size: 0.47 acres (20,615 sq. ft.)
- Year built: 1953
- Remodeled: 2006, 2011
- Beautiful, updated interior with high-end finishes
- Highly-functional lower level
- Adjacent street parking
- Pylon electronic board stays

Pricing

- List price: \$1,350,000
- 2020 Real Estate Taxes: \$17,307.88

Location

- High traffic location on E. 10th street, just west of I-229
- Traffic counts: 26,100 vpd
- Area neighbors include: QDoba, Pita Pit, Hy-Vee, Austad's Golf, Super 8 by Wyndham



For more information:

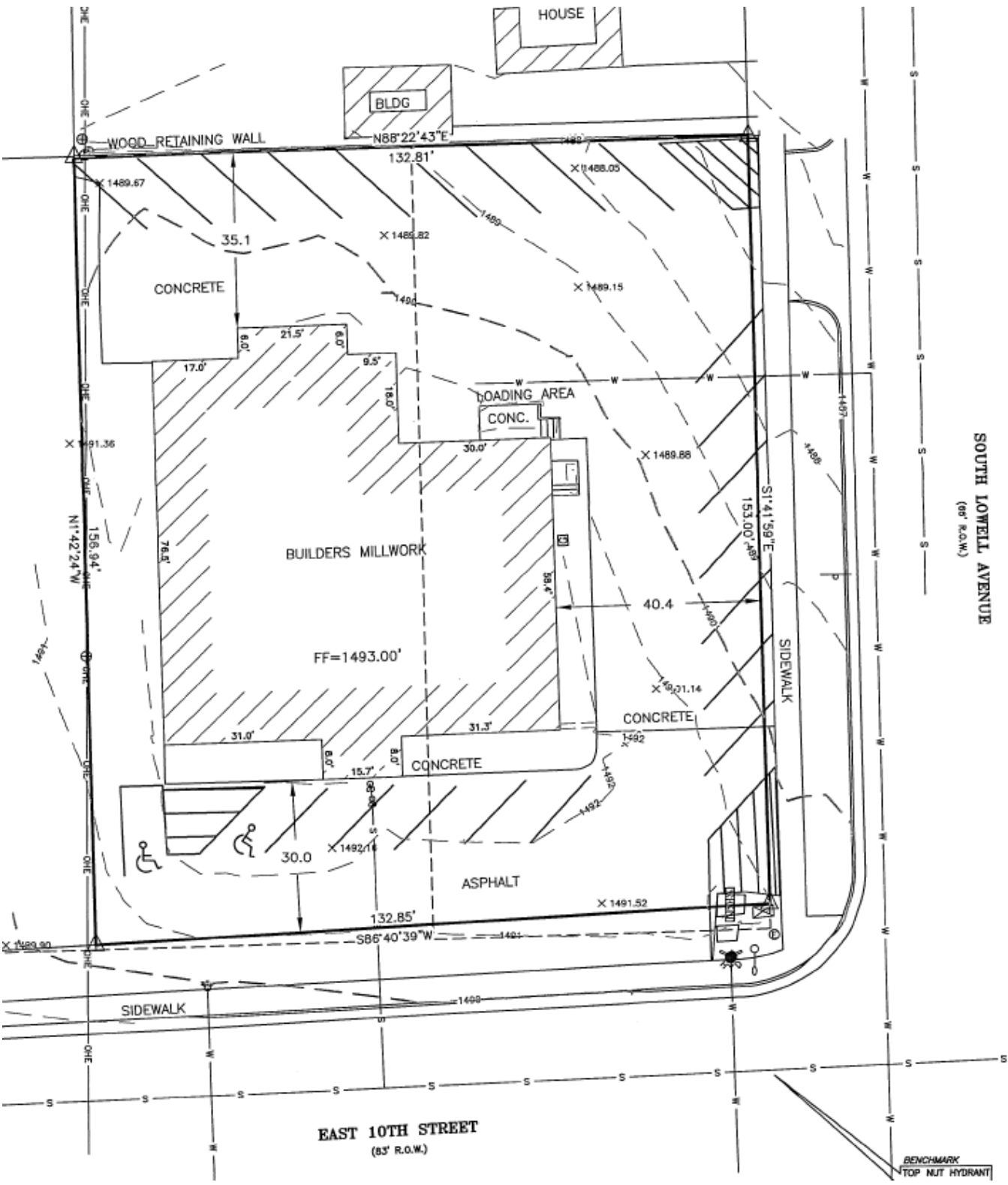
Ryan Ammann

+1 605 310 7091 • rammann@naisiouxfalls.com

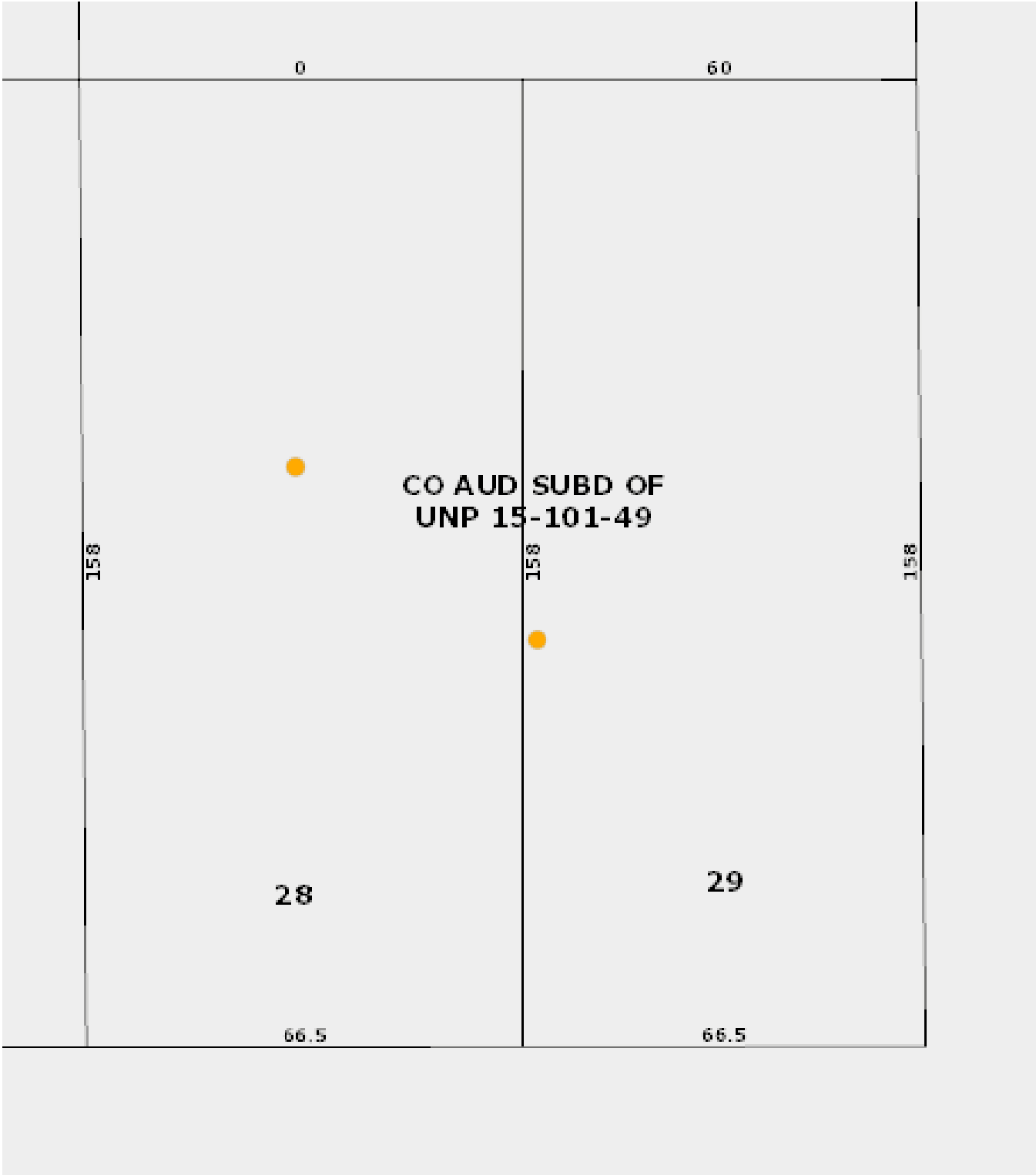
FOR SALE



FOR SALE

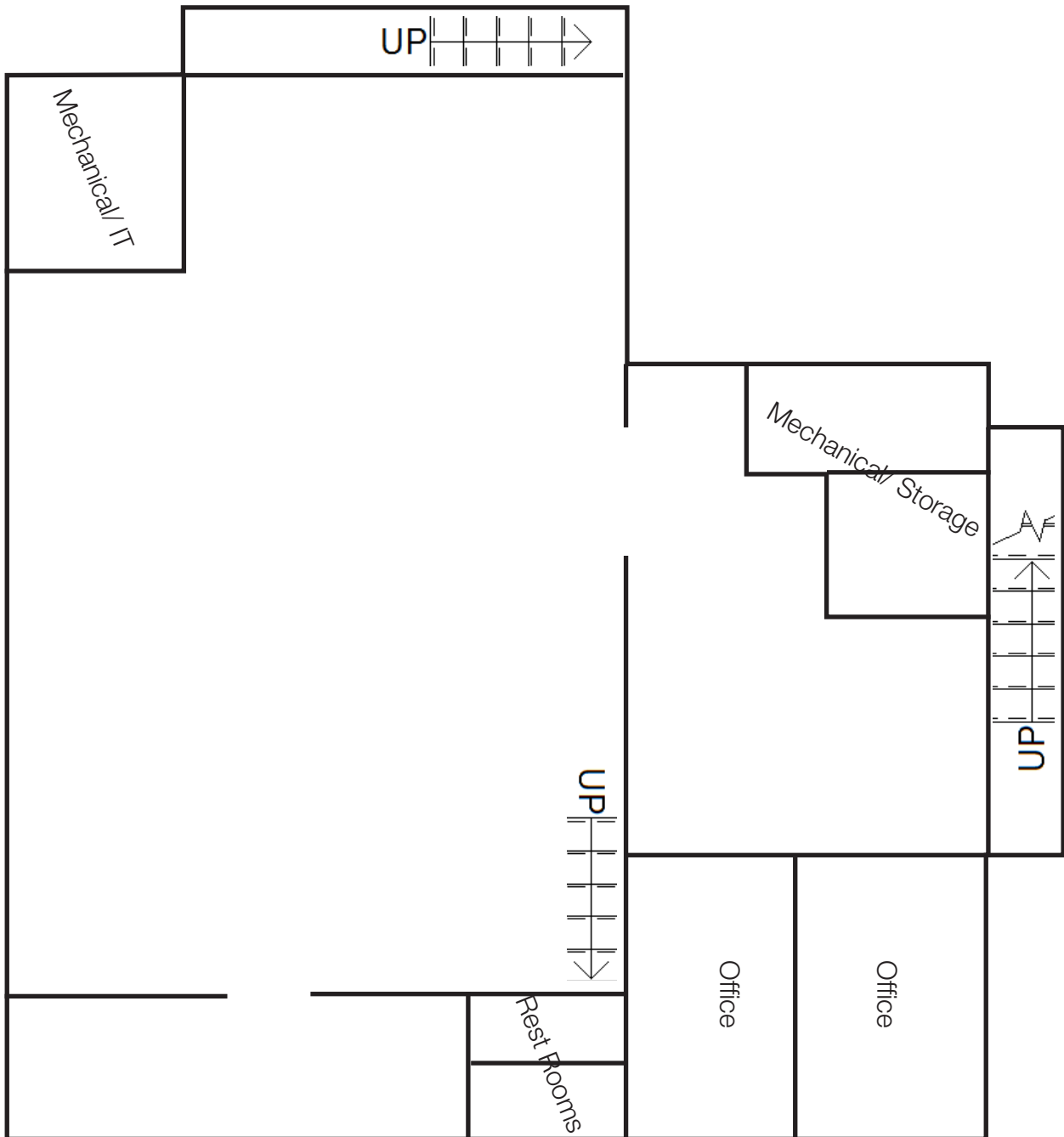


FOR SALE

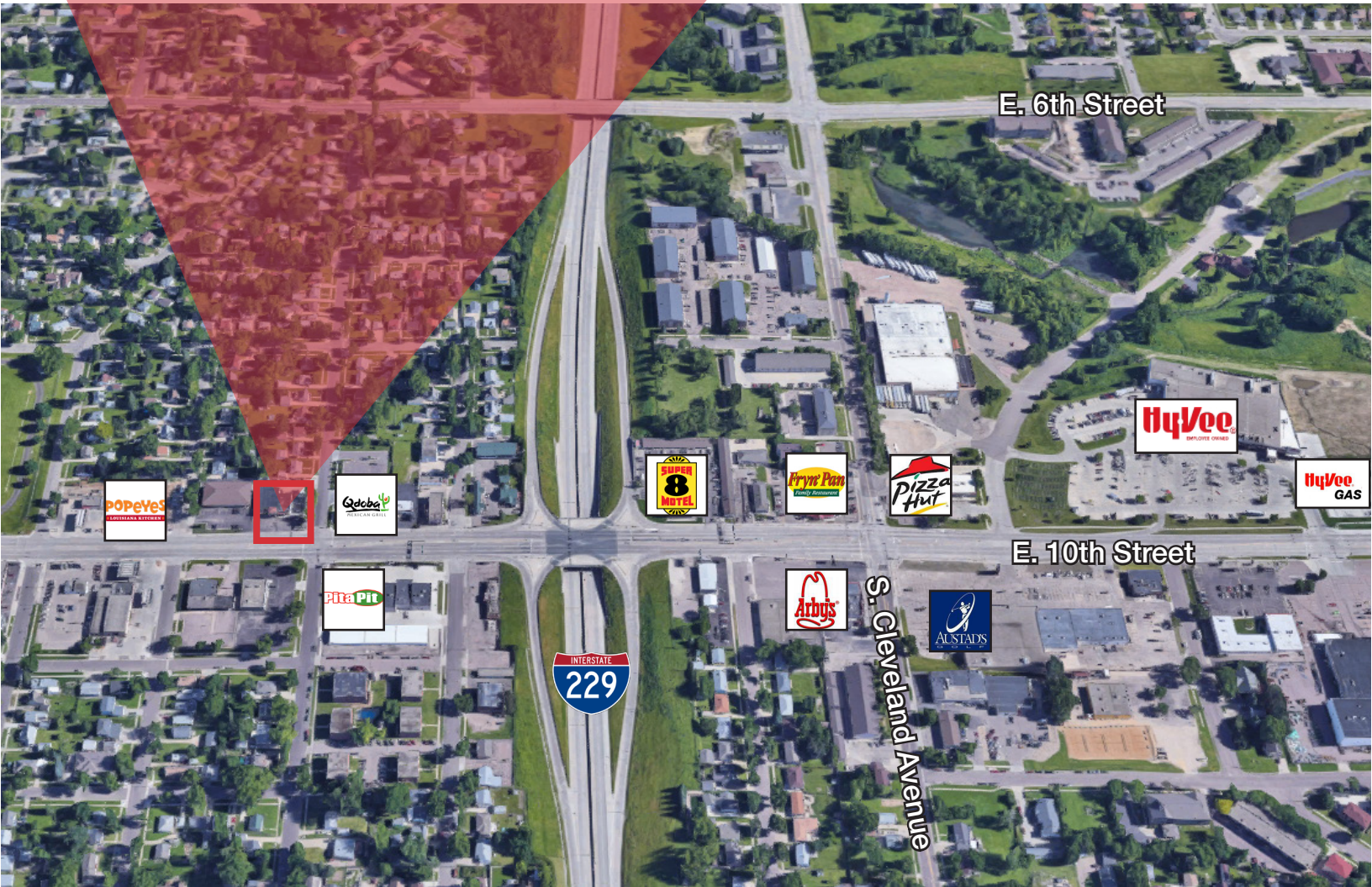


FOR SALE

Lower Level Floor Plan



FOR SALE



NA Sioux Falls



2500 W. 49th Street Suite 100
Sioux Falls, SD 57105
+1 605 357 7100
naisiouxfalls.com