

Shop/ Warehouse



47005 Mona Street

Tea, SD 57064

Property Features

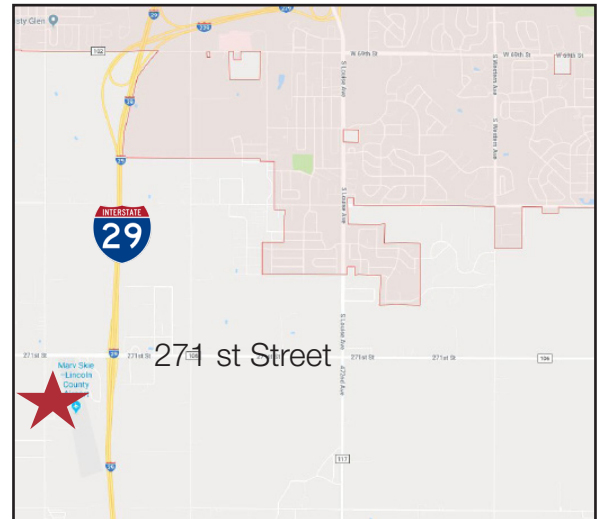
- Suite size: 5,700 sq. ft.
- Fenced-in, crushed concrete with the space (84'x50')
- Paved, on-site parking
- Zoning: I-1 Light Industrial
- One 16'x14' overhead door
- 16' sidewall height
- Available October 1, 2021
- **All tours must go through listing broker**

Pricing

- Lease Price: \$7.00/ sq. ft. gross

Location

- Located west of the Tea Airport
- Just south of Highway 106/ 271st
- Area neighbors include: J&L Premier Automotive, Vermeer Equipment, Specialty Cars, Nursery Wholesalers, Dobesh Construction, A/V Cabinetry



For more information:

Marcus Mahlen, CCIM

+1 605 228 9744 • mmahlen@naisiouxfalls.com

2500 W. 49th Street Suite 100

Sioux Falls, SD 57105

+1 605 357 7100

naisiouxfalls.com

NO WARRANTY OR REPRESENTATION, EXPRESS OR IMPLIED, IS MADE AS TO THE ACCURACY OF THE INFORMATION CONTAINED HEREIN, AND THE SAME IS SUBMITTED SUBJECT TO ERRORS, OMISSIONS, CHANGE OF PRICE, RENTAL OR OTHER CONDITIONS, PRIOR SALE, LEASE OR FINANCING, OR WITHDRAWAL WITHOUT NOTICE, AND OF ANY SPECIAL LISTING CONDITIONS IMPOSED BY OUR PRINCIPALS NO WARRANTIES OR REPRESENTATIONS ARE MADE AS TO THE CONDITION OF THE PROPERTY OR ANY HAZARDS CONTAINED THEREIN ARE ANY TO BE IMPLIED.

FOR LEASE



NAI Sioux Falls

2500 W. 49th Street Suite 100
Sioux Falls, SD 57105
+1 605 357 7100
naisiouxfalls.com

FOR LEASE



NAI Sioux Falls

2500 W. 49th Street Suite 100
Sioux Falls, SD 57105
+1 605 357 7100
naisiouxfalls.com