

## Industrial Building



1065 Ruud Trail  
Hartford, SD 57033

### Property Features

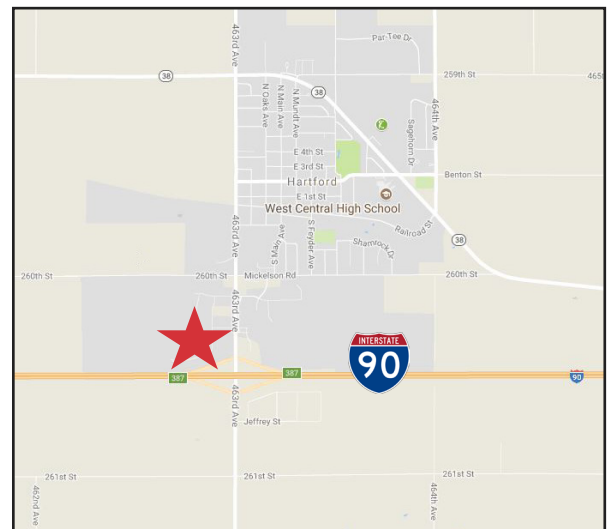
- Brand new building with I-90 visibility
- Building size: 12,280 sq. ft.
- 1,080 sq. ft. office
- Lot size: 1.36 acres
- One (1) dock door
- One (1) 14' overhead door
- 20' clear height
- Floor drains
- Radiant heat
- 3 Phase power
- Available immediately

### Pricing

- Lease rate: \$7.00/ sq. ft. NNN

### Location

- Located just north of I-90 in Hartford, SD off Exit 387
- Area neighbors include: Gillespie Outdoor Power Equipment, Brisk RV Sales, Coffee Cup Fuel Stop, Tammen Auto & Tire, and AmericInn by Wyndham Hartford SD



**Bill Connelly**

605 254 2360 • [bconnelly@naisiouxfalls.com](mailto:bconnelly@naisiouxfalls.com)

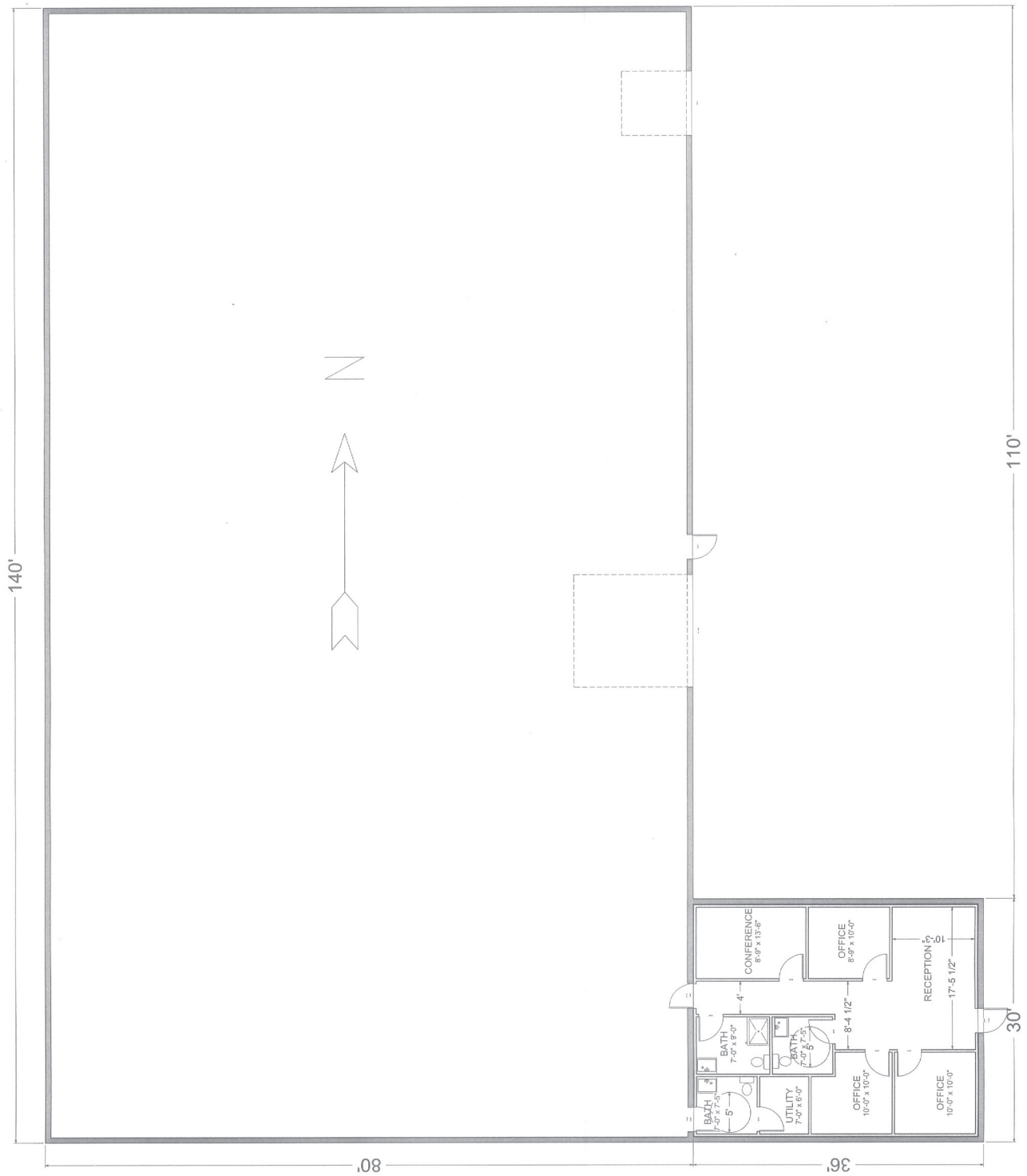
NO WARRANTY OR REPRESENTATION, EXPRESS OR IMPLIED, IS MADE AS TO THE ACCURACY OF THE INFORMATION CONTAINED HEREIN, AND THE SAME IS SUBMITTED SUBJECT TO ERRORS, OMISSIONS, CHANGE OF PRICE, RENTAL OR OTHER CONDITIONS, PRIOR SALE, LEASE OR FINANCING, OR WITHDRAWAL WITHOUT NOTICE, AND OF ANY SPECIAL LISTING CONDITIONS IMPOSED BY OUR PRINCIPALS NO WARRANTIES OR REPRESENTATIONS ARE MADE AS TO THE CONDITION OF THE PROPERTY OR ANY HAZARDS CONTAINED THEREIN ARE ANY TO BE IMPLIED.

2500 W. 49th Street Suite 100  
Sioux Falls, SD 57105  
+1 605 357 7100  
[naisiouxfalls.com](http://naisiouxfalls.com)

FOR LEASE



FOR LEASE



FOR LEASE



**NAI** Sioux Falls

2500 W. 49th Street Suite 100  
Sioux Falls, SD 57105  
+1 605 357 7100  
naisiouxfalls.com

