

Office Building



105 N Krohn Place

Sioux Falls, SD 57103

Property Features

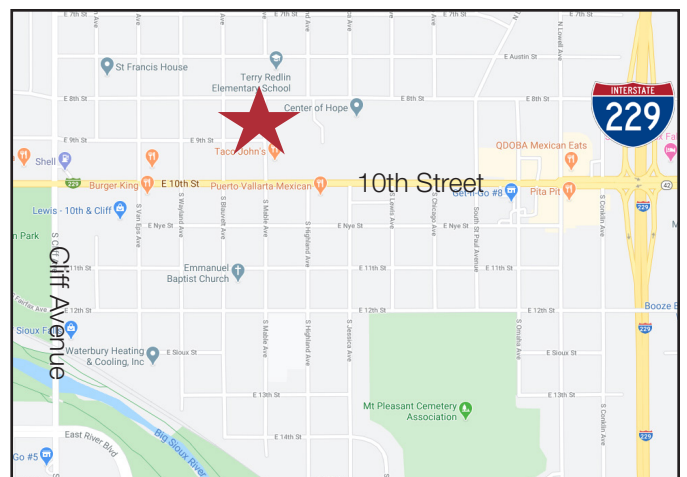
- Suite 1: +/- 6,913 sq. ft.
- **Entire first floor available for lease**
- Includes four (4) executive-size offices, large reception area, boardroom
- Ample surface level parking
- Shared break room and training room
- Mother's room
- Open courtyard area
- Fully-secured building
- This suite is currently owner-occupied. Owner intends to vacate at lease commencement with minimum 30 days notice.

Pricing

- Lease rate: \$20.00/ sq. ft. full service gross (includes utilities)

Location

- Located on the former CSD campus between E. 10th and E. 8th Streets on N. Krohn Place



For more information:

Marcus Mahlen, CCIM

+1 605 228 9744 • mmahlen@naisiouxfalls.com

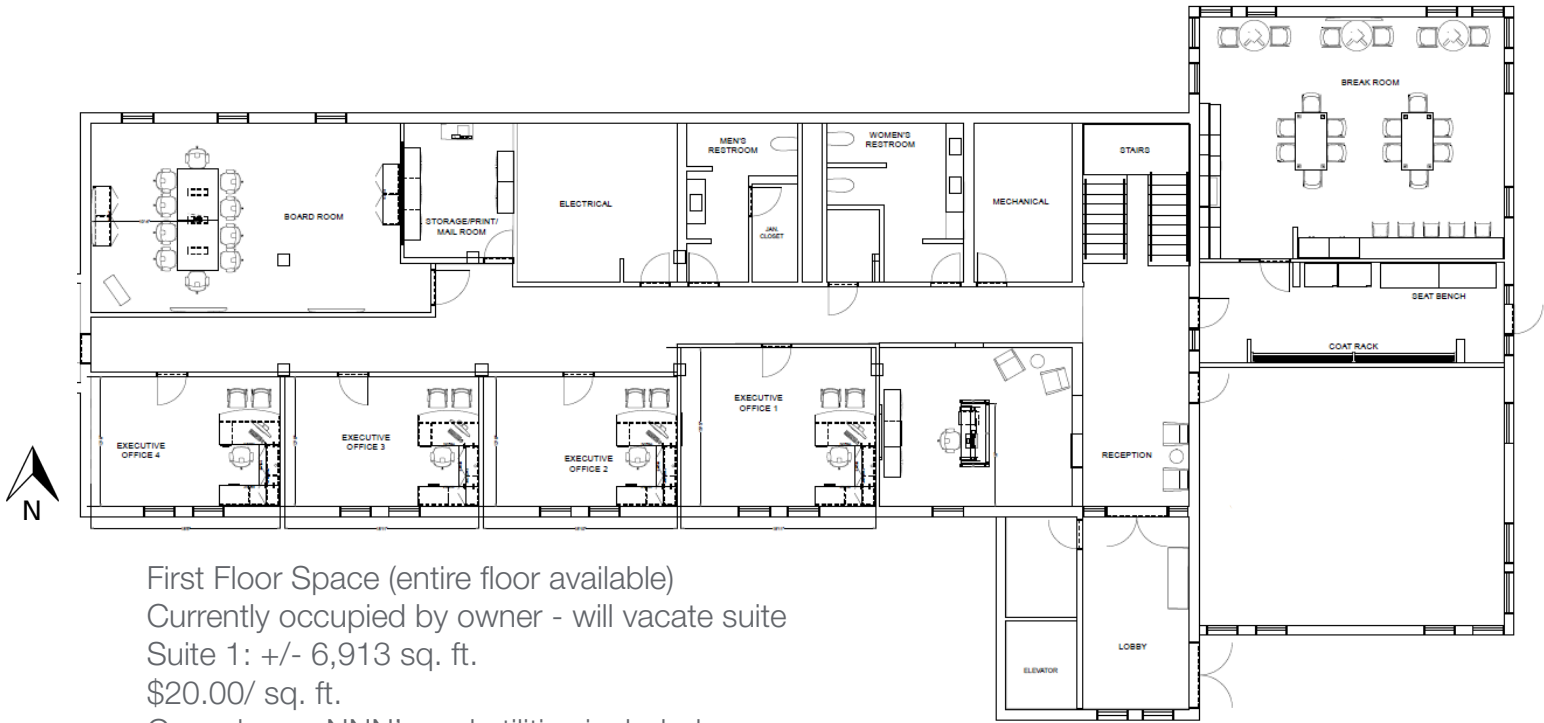
2500 W. 49th Street Suite 100

Sioux Falls, SD 57105

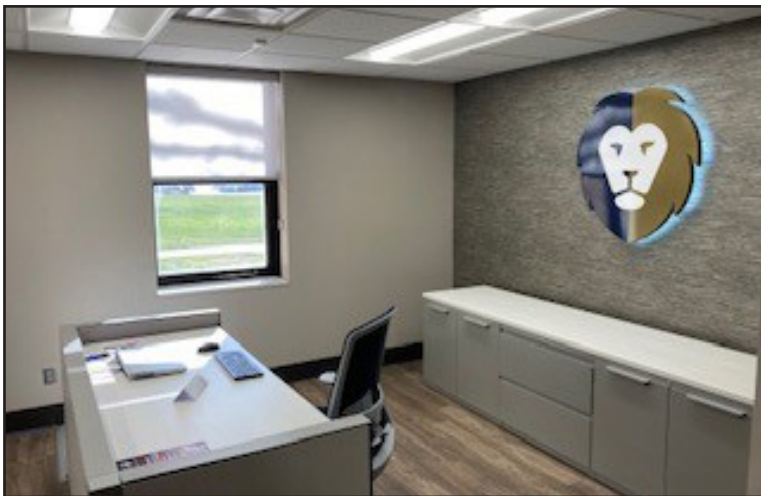
+1 605 357 7100

naisiouxfalls.com

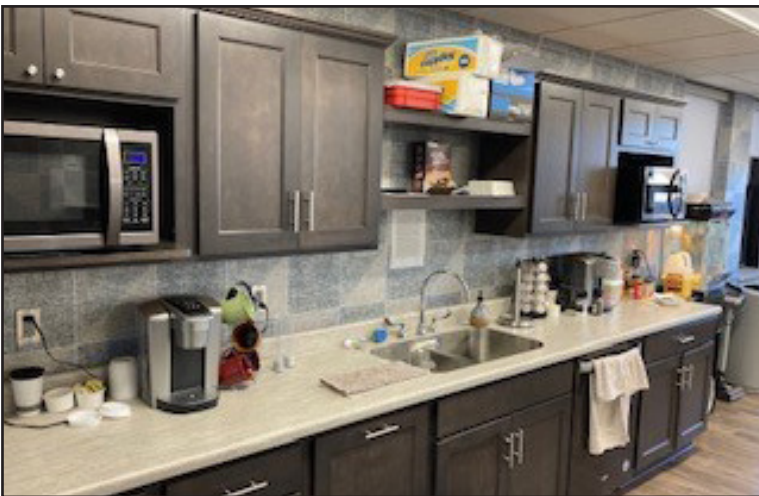
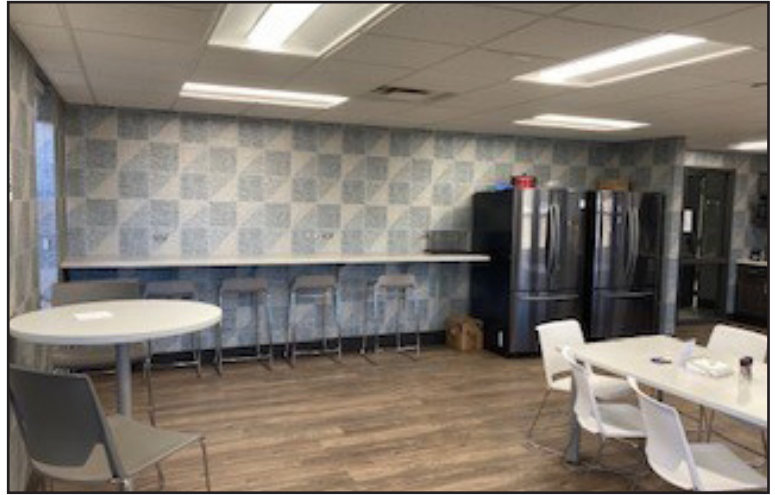
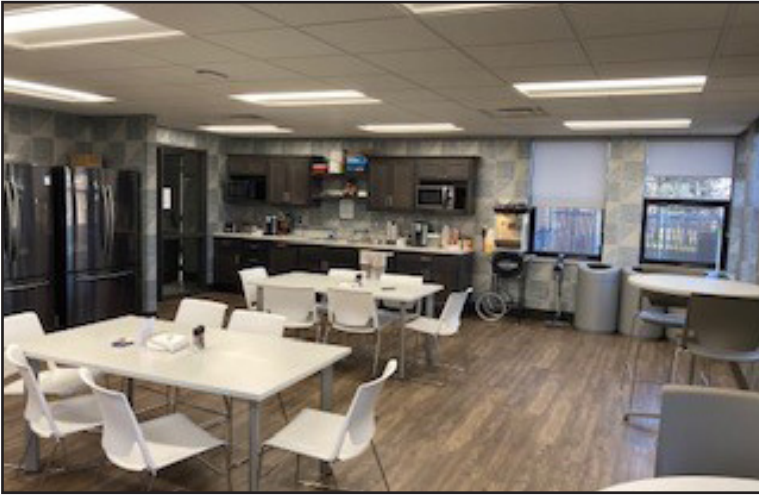
NO WARRANTY OR REPRESENTATION, EXPRESS OR IMPLIED, IS MADE AS TO THE ACCURACY OF THE INFORMATION CONTAINED HEREIN, AND THE SAME IS SUBMITTED SUBJECT TO ERRORS, OMISSIONS, CHANGE OF PRICE, RENTAL OR OTHER CONDITIONS, PRIOR SALE, LEASE OR FINANCING, OR WITHDRAWAL WITHOUT NOTICE, AND OF ANY SPECIAL LISTING CONDITIONS IMPOSED BY OUR PRINCIPALS NO WARRANTIES OR REPRESENTATIONS ARE MADE AS TO THE CONDITION OF THE PROPERTY OR ANY HAZARDS CONTAINED THEREIN ARE ANY TO BE IMPLIED.



First Floor Space (entire floor available)
 Currently occupied by owner - will vacate suite
 Suite 1: +/- 6,913 sq. ft.
 \$20.00/ sq. ft.
 Gross lease, NNN's and utilities included
 quoted rental rate



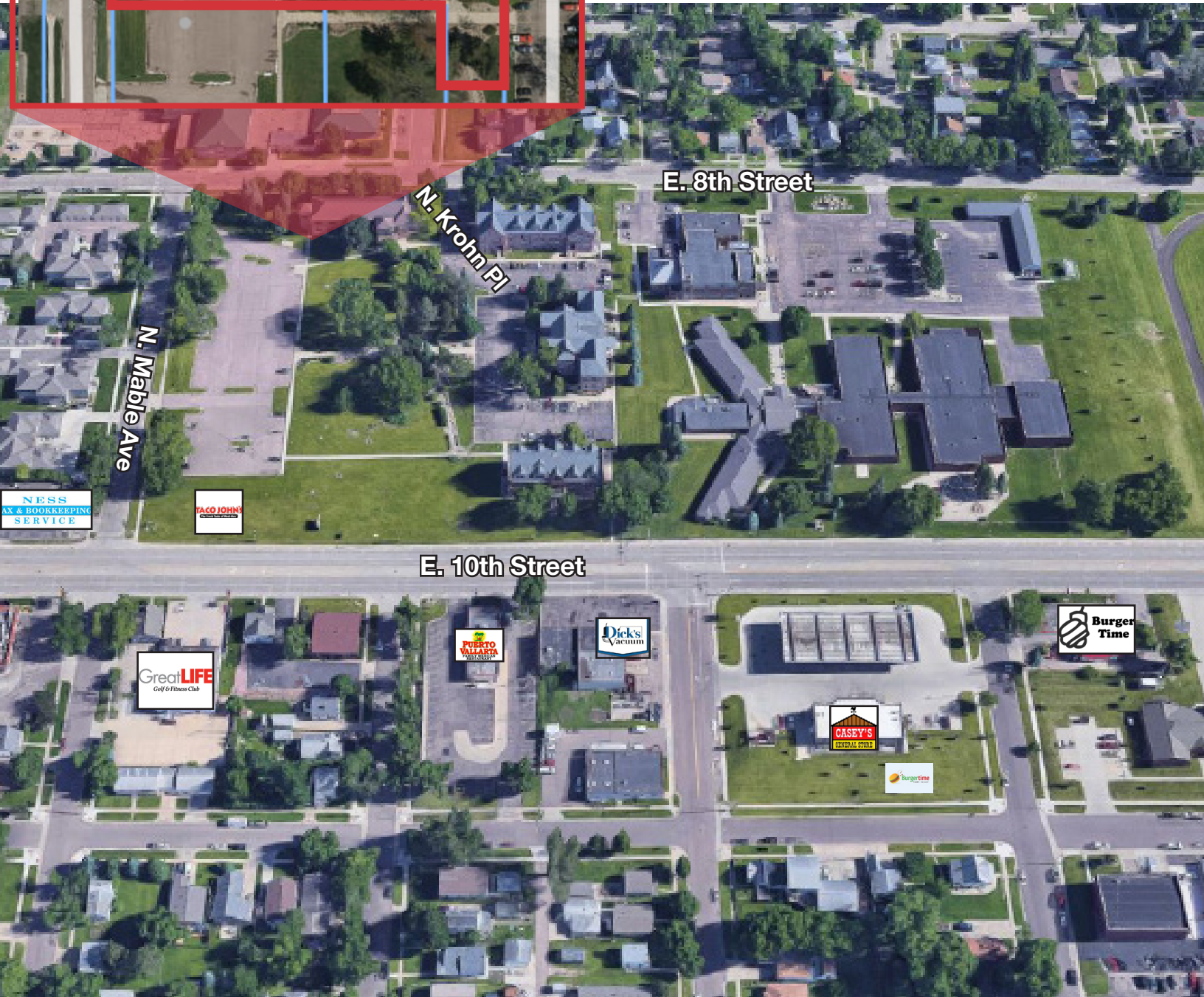
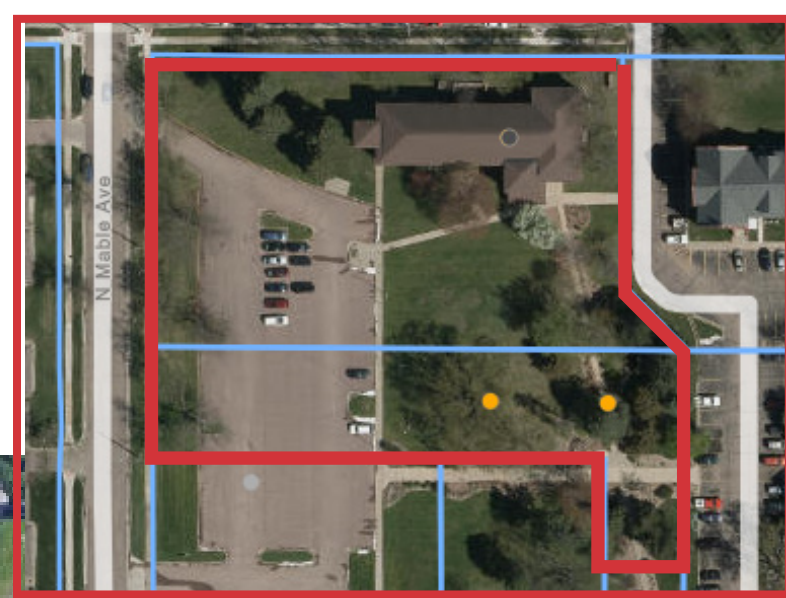
FOR LEASE



NASioux Falls

2500 W. 49th Street Suite 100
Sioux Falls, SD 57105
+1 605 357 7100
naisiouxfalls.com

FOR LEASE



NAI Sioux Falls



2500 W. 49th Street Suite 100
Sioux Falls, SD 57105
+1 605 357 7100
naisiouxfalls.com