



316 NE 2nd Street
Madison, SD 57042

Property Features

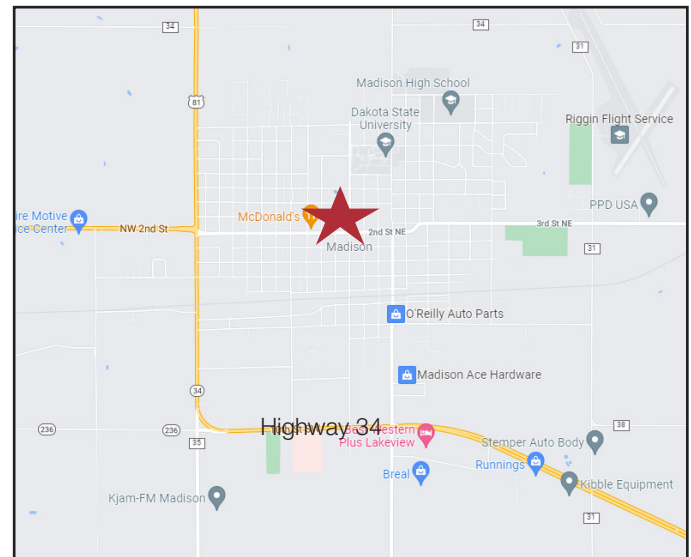
- Building size: 1,440 sq. ft.
- Lot size: 0.117 acres
- **Busiest intersection in Madison - 5,000 vpd!**
- Great location for a restaurant
- 6' x 6' walk-in cooler
- **Built-to-Suit/rebuild option available, contact broker for details**

Pricing

- Lease rate: \$1,400.00/ month gross

Location

- Located in Madison, SD home to Dakota State University, just 50 miles northwest of Sioux Falls, SD
- Situated on the corner of Washington and 2nd - just south of DSU -
- Area neighbors include: McDonald's, Dairy Queen, Subway

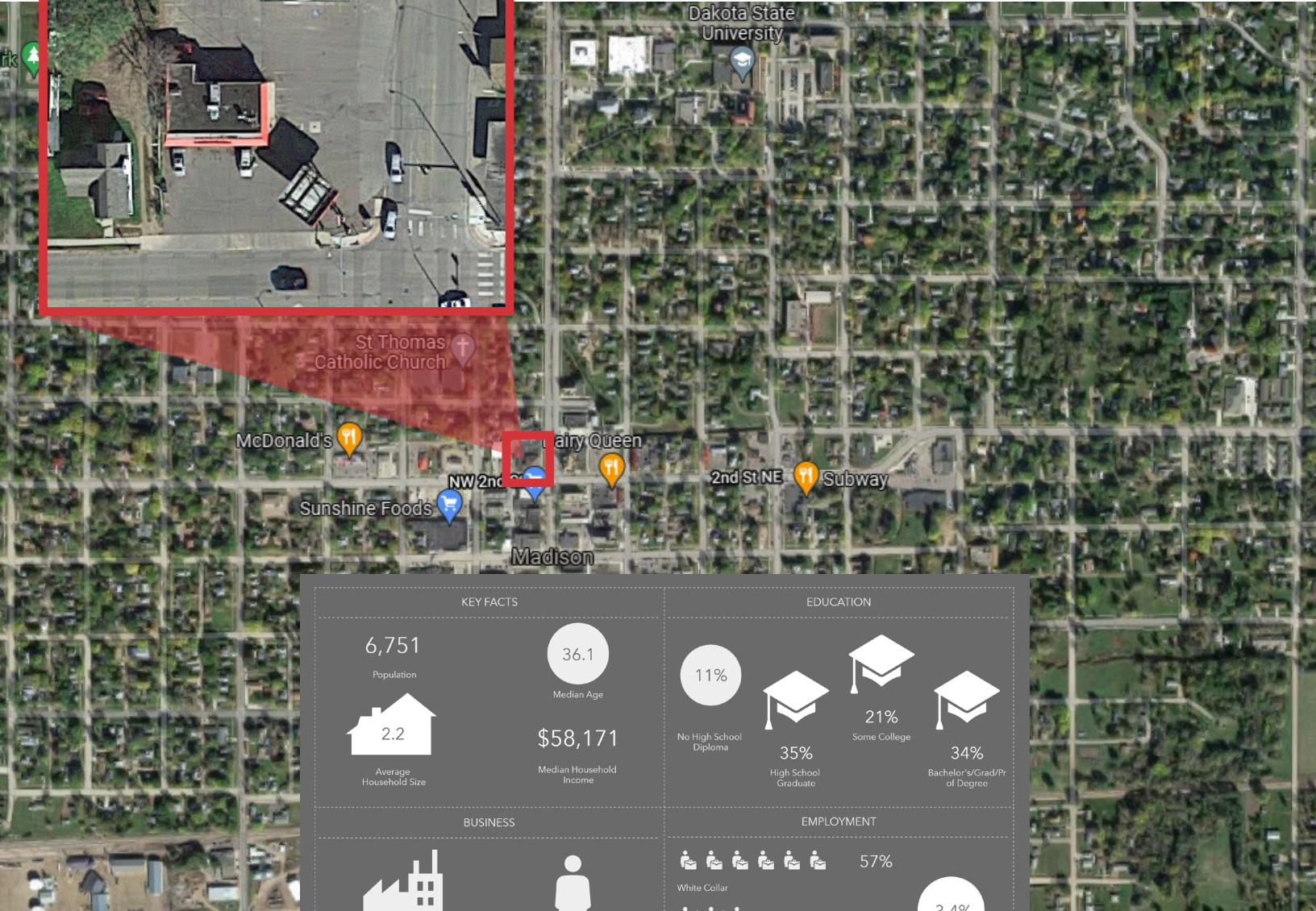


For more information:

Tim Schut

+1 605 212-1027 • tschut@naisiouxfalls.com

FOR LEASE
OR BUILT-TO-SUIT



KEY FACTS

- 6,751 Population
- 36.1 Median Age
- 2.2 Average Household Size
- \$58,171 Median Household Income

EDUCATION

- 11% No High School Diploma
- 35% High School Graduate
- 21% Some College
- 34% Bachelor's/Grad/Pr of Degree

BUSINESS

- 315 Total Businesses
- 3,469 Total Employees

EMPLOYMENT

- 57% White Collar
- 25% Blue Collar
- 18% Services
- 3.4% Unemployment Rate

INCOME

- \$58,171 Median Household Income
- \$28,920 Per Capita Income
- \$103,564 Median Net Worth

Households By Income

The largest group: \$50,000 - \$74,999 (24.8%)
The smallest group: \$200,000+ (2.8%)

Indicator ▲	Value	Diff
<\$15,000	13.8%	+3.9%
\$15,000 - \$24,999	8.1%	+1%
\$25,000 - \$34,999	6.1%	-0.3%
\$35,000 - \$49,999	11.2%	+1.2%
\$50,000 - \$74,999	24.8%	+3.6%
\$75,000 - \$99,999	17.2%	+0.6%
\$100,000 - \$149,999	12.5%	-8%
\$150,000 - \$199,999	3.5%	+0.3%
\$200,000+	2.8%	-2.3%

Bars show deviation from

This infographic contains data provided by Esri, Esri and Data Axle. The vintage of the data is 2021, 2026. © 2021 Esri