



## The Sherman Building

1320 S. Minnesota Avenue, Sioux Falls, SD 57105

### Property Features

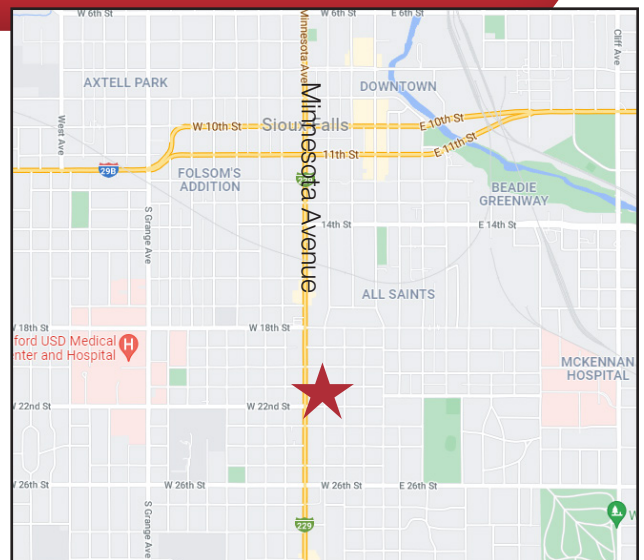
- Building size: 17,920 sq. ft. on two levels
- Second floor is shell condition
- Basement; 1,735 sq. ft.
- Lot size: 0.84 acres (36,670 sq. ft.)
- Year built: 1956
- Renovated: 2022
- Various suite sizes available

### Pricing

- Lease rate: \$15.50/ sq. ft. NNN
- Estimated NNN expenses: \$6.00/ sq. ft.
- TI Allowance: \$25.00/ sq. ft.

### Location

- Located just north of 22nd Street on Minnesota Avenue south of downtown
- Area neighbors include: Empire Auto, CarHop Auto, Risty Benefits, Sanford Health



For more information:

**Gregg Brown, MBA, SIOR**

+1 605 906 0394 • [gbrown@naisiouxfalls.com](mailto:gbrown@naisiouxfalls.com)

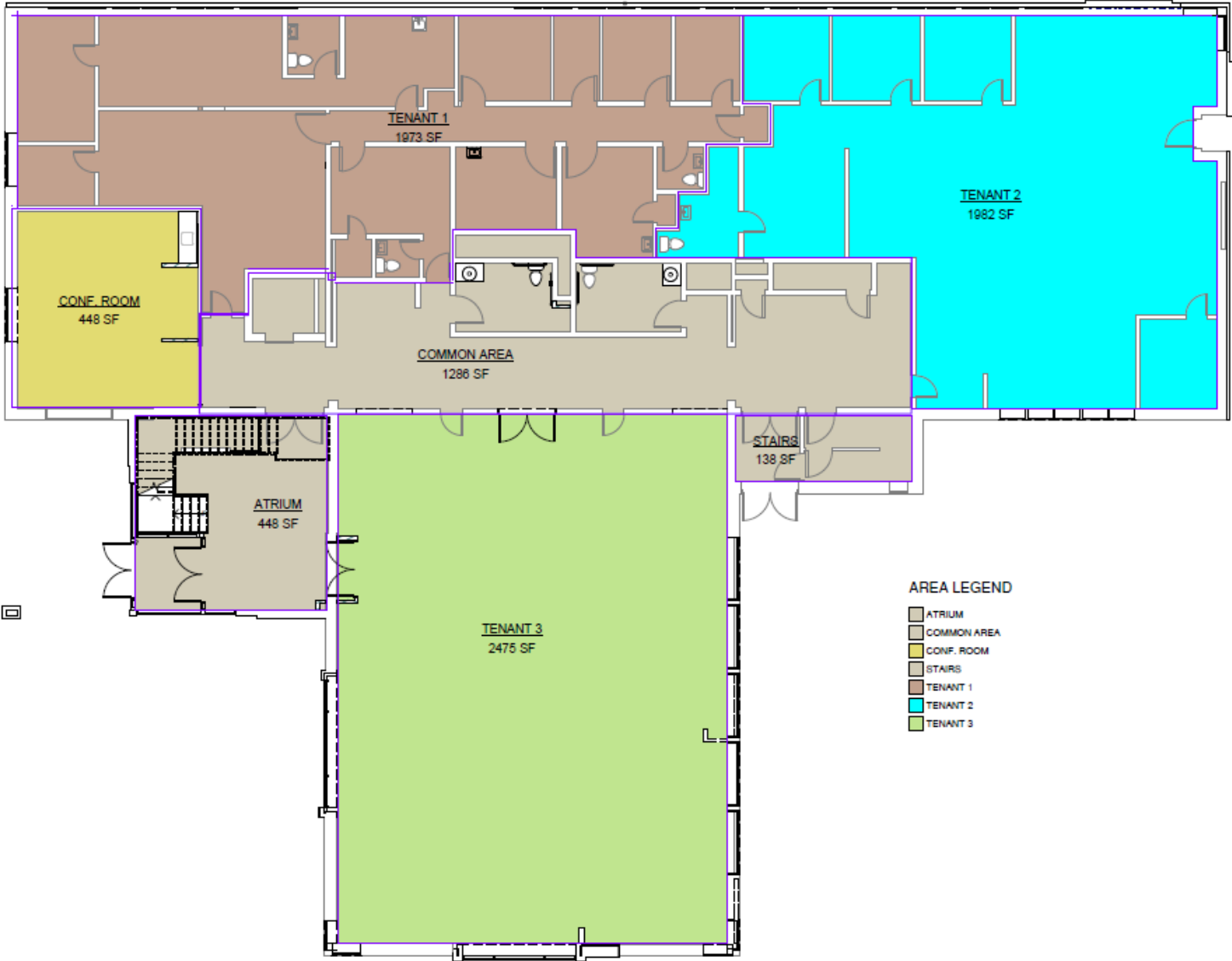
**Dennis Breske, MBA, CCIM, SIOR**

+1 605 310 6666 • [dbreske@naisiouxfalls.com](mailto:dbreske@naisiouxfalls.com)

NO WARRANTY OR REPRESENTATION, EXPRESS OR IMPLIED, IS MADE AS TO THE ACCURACY OF THE INFORMATION CONTAINED HEREIN, AND THE SAME IS SUBMITTED SUBJECT TO ERRORS, OMISSIONS, CHANGE OF PRICE, RENTAL OR OTHER CONDITIONS, PRIOR LEASE, LEASE OR FINANCING, OR WITHDRAWAL WITHOUT NOTICE, AND OF ANY SPECIAL LISTING CONDITIONS IMPOSED BY OUR PRINCIPALS NO WARRANTIES OR REPRESENTATIONS ARE MADE AS TO THE CONDITION OF THE PROPERTY OR ANY HAZARDS CONTAINED THEREIN ARE ANY TO BE IMPLIED.

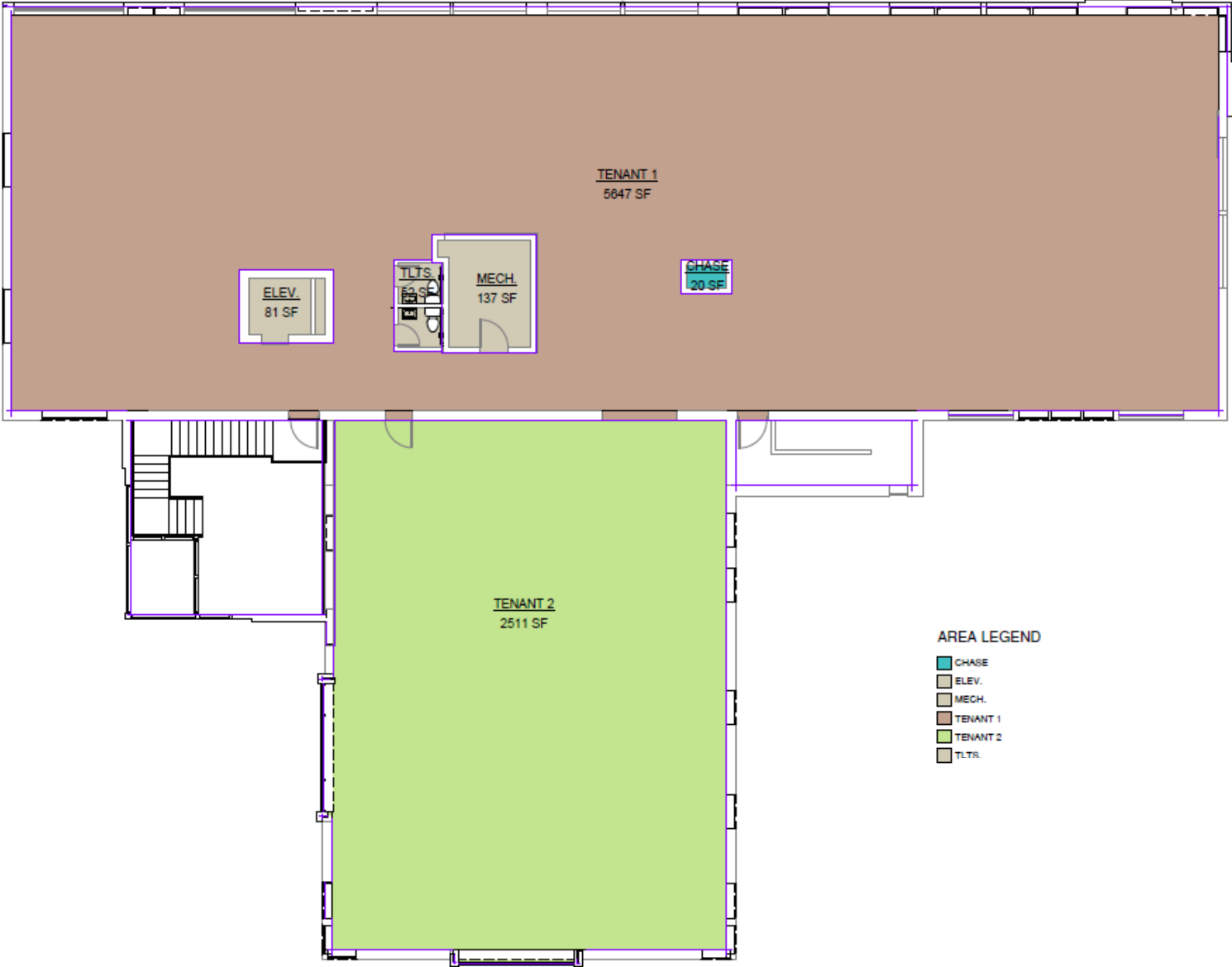
2500 W. 49th Street Suite 100  
Sioux Falls, SD 57105  
+1 605 357 7100  
[naisiouxfalls.com](http://naisiouxfalls.com)

FOR LEASE



1 FIRST FLOOR AREA PLAN  
1/8" = 1'-0"

FOR LEASE



AREA LEGEND

CHASE
ELEV.
MECH.
TENANT 1
TENANT 2
TLTS.

1 SECOND FLOOR AREA PLAN  
1/8" = 1'-0"

FOR LEASE



**NAI** Sioux Falls

2500 W. 49th Street Suite 100  
Sioux Falls, SD 57105  
+1 605 357 7100  
naisiouxfalls.com

