



151 W Prospect Street
Harrisburg, SD 57032

Property Features

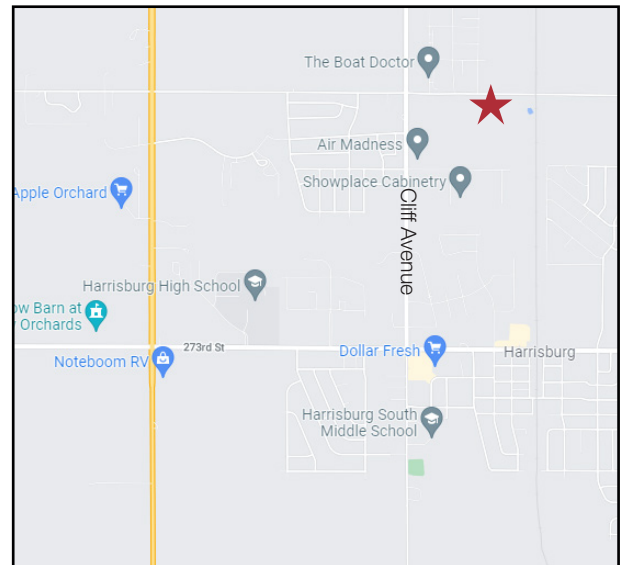
- New construction
- Occupancy May 1, 2022
- Suite 2: 1,800 sq. ft. (30'x 60')
- Suite 3: 1,800 sq. ft. (30'x 60')
- Suite 4: 1,800 sq. ft. (30'x 60')
- Suite 5: 1,800 sq. ft. (30'x 60')
- Suite 6: 1,800 sq. ft. (30'x 60')
- Radiant heat
- Floor drains
- 3-phase power, 120/240 volt
- 18' sidewalls
- 14' x 14' overhead doors

Pricing

- Lease rate: \$6.50/ sq. ft. NNN

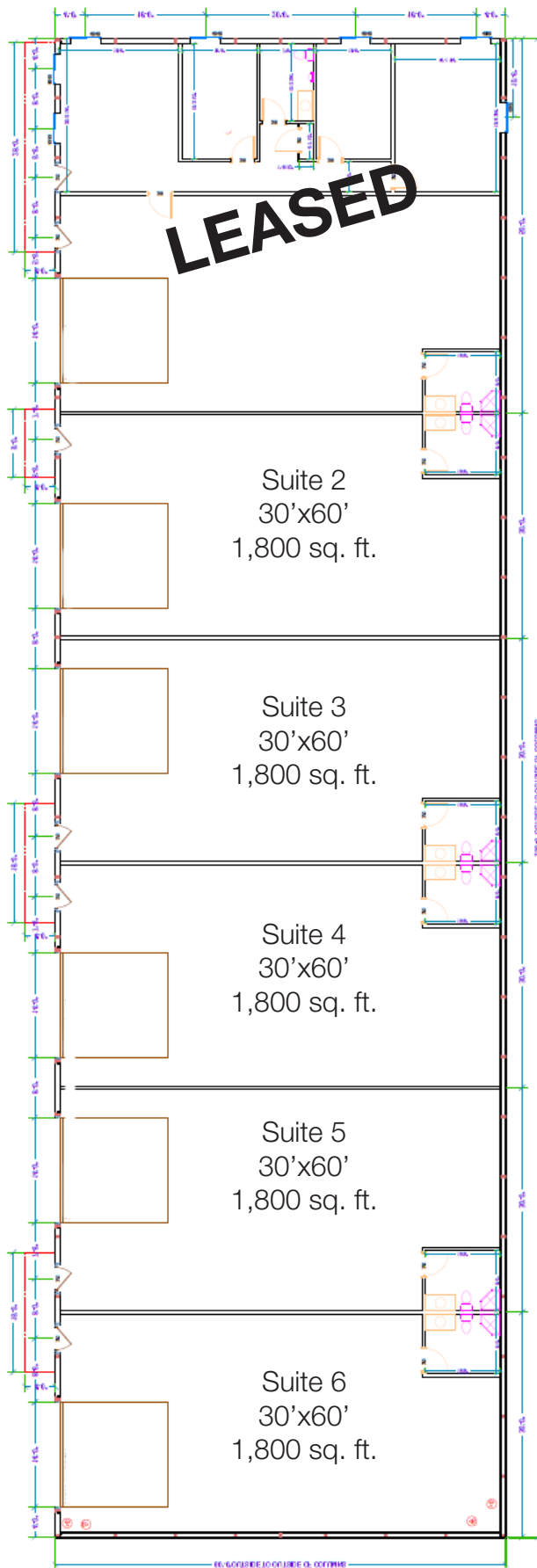
Pricing

- Located in the fastest growing community in South Dakota, just east of Cliff Avenue in Harrisburg, SD
- Area neighbors include: Air Madness, The Boat Doctor, Showplace Cabinetry, GreatLife Fitness, Shoeneman's Building Materials Center



Craig Hagen, CCIM, SIOR

605 310 4227 • chagen@naisiouxfalls.com



FOR LEASE

