

Commercial, Office, & Multi-Family Land



Sage Meadow Village

85th & Tallgrass, Sioux Falls, SD 57108

Property Features

- Located in the growing south west side of Sioux Falls just east of the future 85th & I-29 interchange
- Zoning: C-2, C-3, LW, RA-3, RA-1, RD
- All Phase 1 street improvements are complete

Pricing

- List price: Varies, see page 3
- 2020 Real Estate Taxes: TBD

For more information:

Craig Hagen, CCIM, SIOR
Senior Vice President

605 310 4227 • chagen@naisiouxfalls.com



85th Street

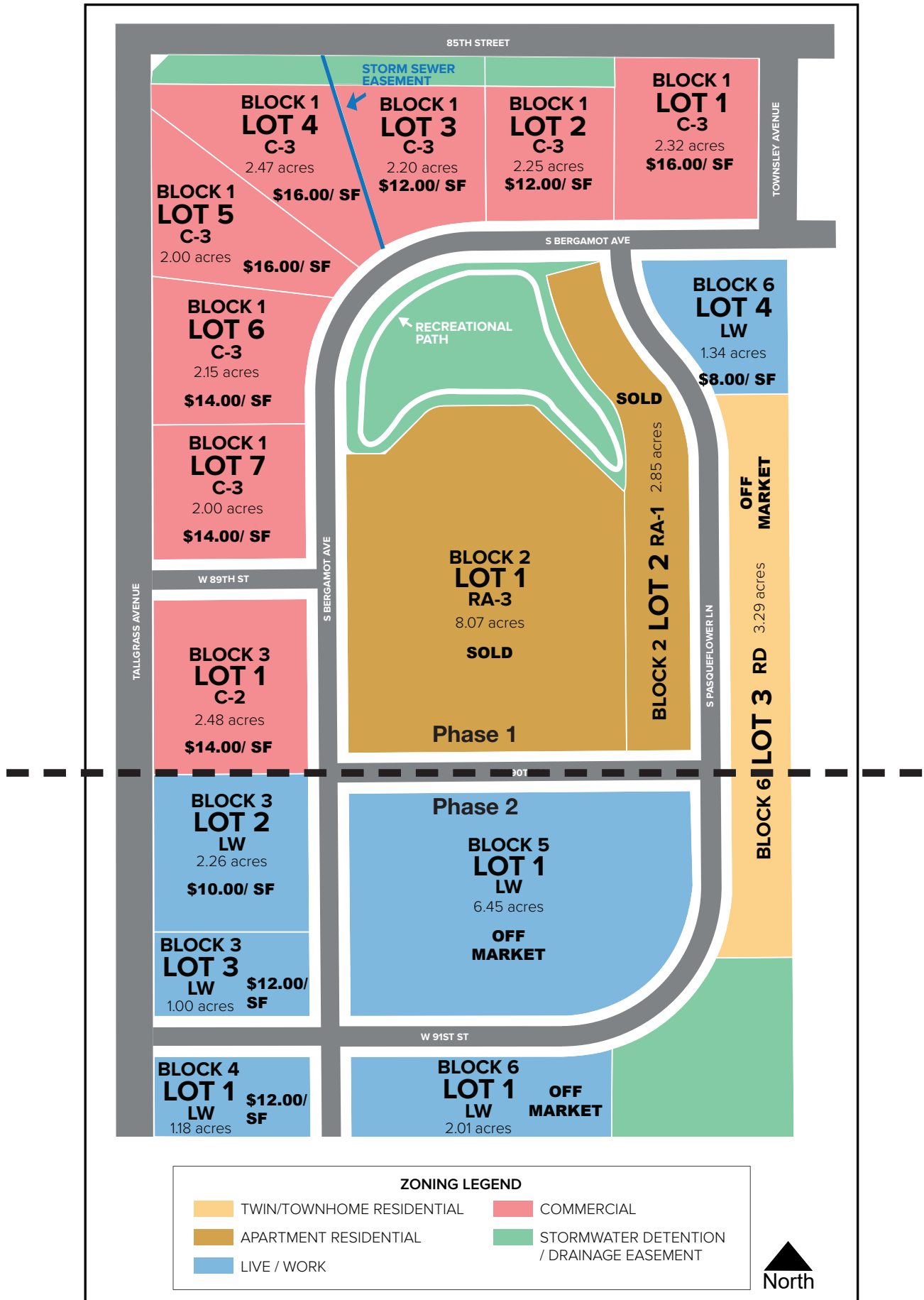
Tallgrass Avenue



Tallgrass Avenue

85th Street

Sage Meadow Village



FOR SALE



**85th & I-29 Interchange
Tenative Timeline**

- 2022 Right of Way
- 2023 Construction Starts
- 2025 Completion