

Creekside Land

TBD Cliff or Willow Avenue, Harrisburg, SD 57032

Property Features

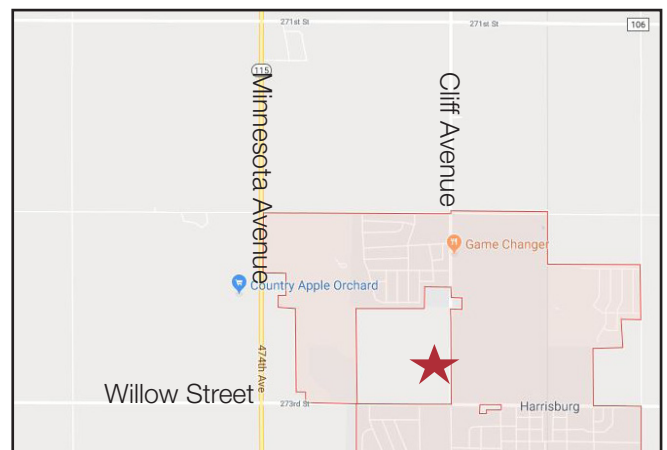
- Commercial lots available for purchase
- See page 2 for details
- Build-to-suit opportunities for sale or lease as well
- Zoning: General Commercial

Pricing

- List price: \$7.00 - \$14.00/ sq. ft.

Location

- Located in the fastest growing community in South Dakota
- Near the intersection of Cliff Ave. & Willow Street in Harrisburg, SD
- 2020 Cars Per Day:
 - Willow Street: 5,591
 - Cliff Avenue: 4,924
- Area neighbors include: B&G Milkyway, Fareway, Ace Hardware, Sanford Health, Lewis Drug, Harrisburg Family Dental, Edward Jones, Evolve Chiropractic, RightQuote, Serenity Nail Spa



Gregg Brown, MBA, SIOR

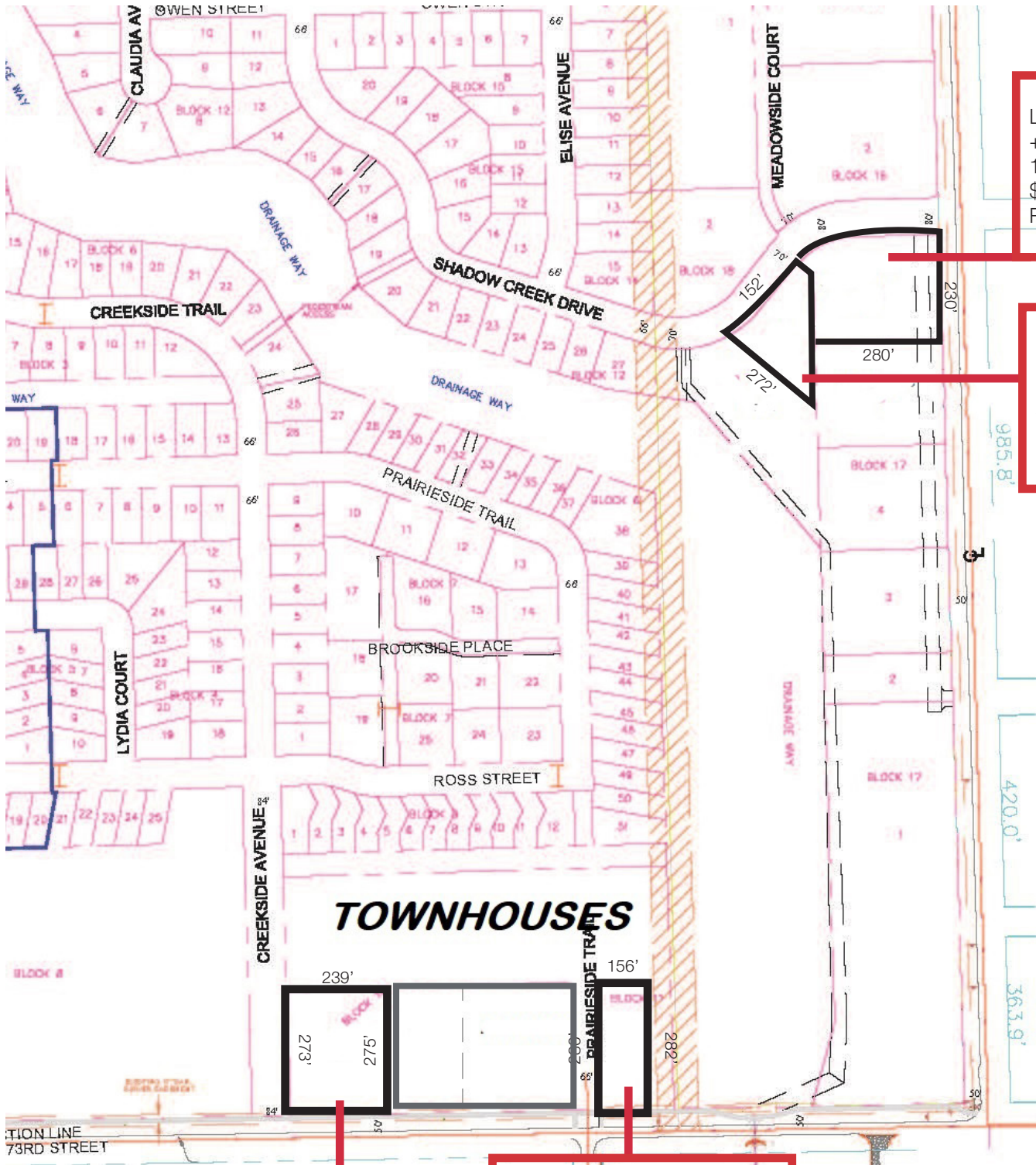
+1 605 906 0394 • gbrown@naisiouxfalls.com

Marcus Mahlen, CCIM

+1 605 228 9744 • mmahlen@naisiouxfalls.com

NO WARRANTY OR REPRESENTATION, EXPRESS OR IMPLIED, IS MADE AS TO THE ACCURACY OF THE INFORMATION CONTAINED HEREIN, AND THE SAME IS SUBMITTED SUBJECT TO ERRORS, OMISSIONS, CHANGE OF PRICE, RENTAL OR OTHER CONDITIONS, PRIOR SALE, LEASE OR FINANCING, OR WITHDRAWAL WITHOUT NOTICE, AND OF ANY SPECIAL LISTING CONDITIONS IMPOSED BY OUR PRINCIPALS. NO WARRANTIES OR REPRESENTATIONS ARE MADE AS TO THE CONDITION OF THE PROPERTY OR ANY HAZARDS CONTAINED THEREIN ARE ANY TO BE IMPLIED.

2500 W. 49th Street Suite 100
Sioux Falls, SD 57105
+1 605 357 7100
naisiouxfalls.com



Lot 1
 +/- 64,490 sq. ft.
 1.48 acres
 \$12.00/ sq. ft.
 Restaurant or bank

Lot 7B
 +/- 33,069 sq. ft.
 0.76 acres
 \$7.00/ sq. ft.
 Stand alone office lot

Lot 3
 +/- 52,985 sq. ft.
 1.22 acres
 May be subdivided
 \$12.00/ sq. ft.
 \$14.00/ sq. ft. hard corner

Lot 2
 +/- 41,500 sq. ft.
 0.95 acres
 \$12.00/ sq. ft.
 Quick serve restaurant, fast food,
 small retail lot

FOR SALE



Lot 1

+/- 64,490 sq. ft.

1.48 acres

\$12.00/ sq. ft.

Restaurant or bank

NAI Sioux Falls

2500 W. 49th Street Suite 100
Sioux Falls, SD 57105
+1 605 357 7100
naisiouxfalls.com

FOR SALE



Lot 7B

+/- 33,069 sq. ft.

0.76 acres

\$7.00/ sq. ft.

Built-to-suite for lease or
built-to-suit for sale contact broker for details



FOR SALE



Lot 2

+/- 41,500 sq. ft.

0.95 acres

\$12.00/ sq. ft.

Quick serve restaurant, fast food, small retail lot

NA Sioux Falls

2500 W. 49th Street Suite 100
Sioux Falls, SD 57105
+1 605 357 7100
naisiouxfalls.com

FOR SALE



Lot 3

+/- 52,985 sq. ft.

1.22 acres

May be subdivided

\$12.00/ sq. ft.

\$14.00/ sq. ft. hard corner

NAI Sioux Falls

2500 W. 49th Street Suite 100
Sioux Falls, SD 57105
+1 605 357 7100
naisiouxfalls.com

FOR SALE

