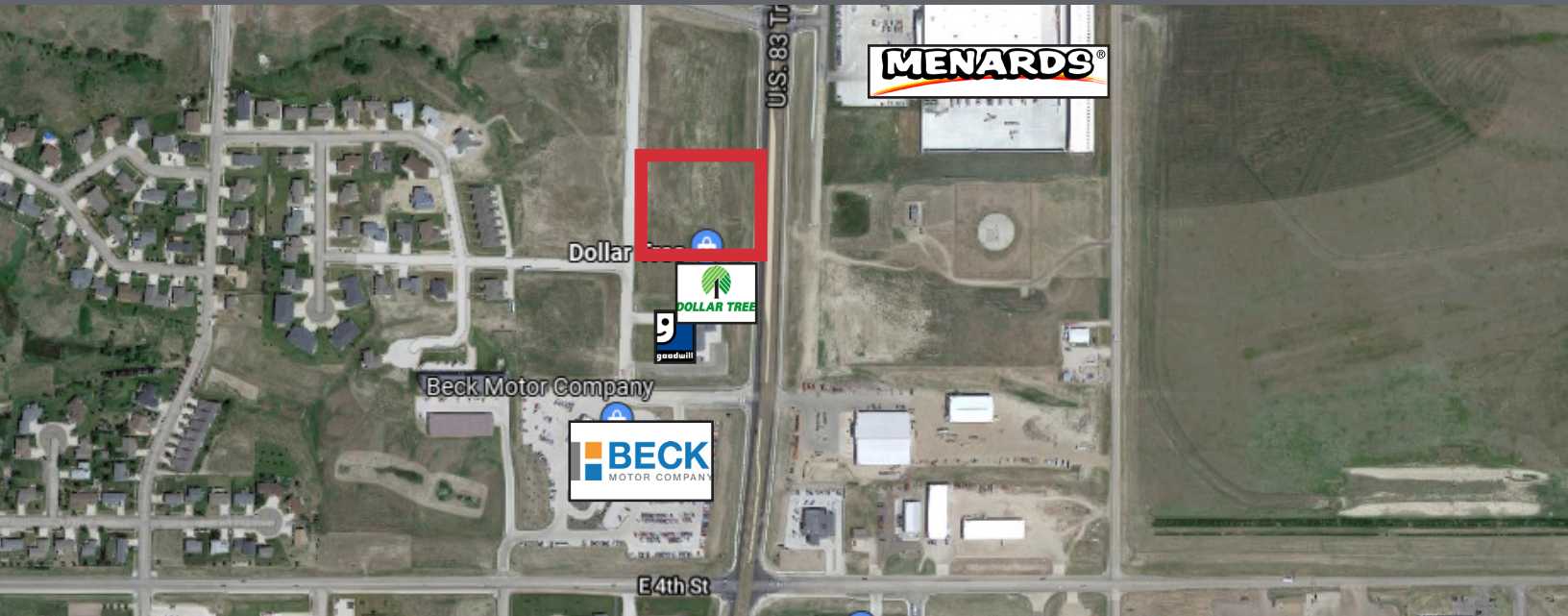


Commercial Land



Lot 1 & Lot 2 Southgate Addition

Pierre, SD 57501

Property Features

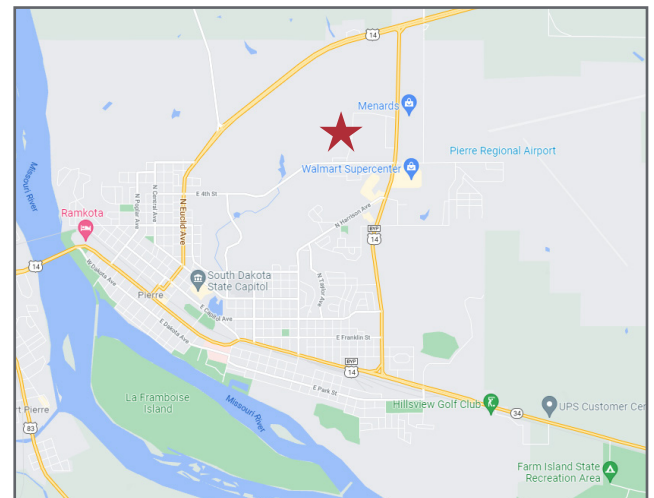
- Lot 1: 44,795 sq. ft. (1.03 acres)
- Lot 2: 44,866 sq. ft. (1.03 acres)
- Build-to-suit option available contact broker

Pricing

- List price: \$7.00/ sq. ft.

Location

- Located in Pierre, the State Capitol of South Dakota
- Area neighbors include: Dollar Tree, Wal-Mart, Menard's, Goodwill of the Great Plains, Beck Motor Company, First National Bank, O'Reilly Auto Parts
- 4,794 vehicles per day on US Hwy Bypass 14



Bill Connelly

605 254 2360 • bconnelly@naisiouxfalls.com

Craig Hagen, CCIM, SIOR

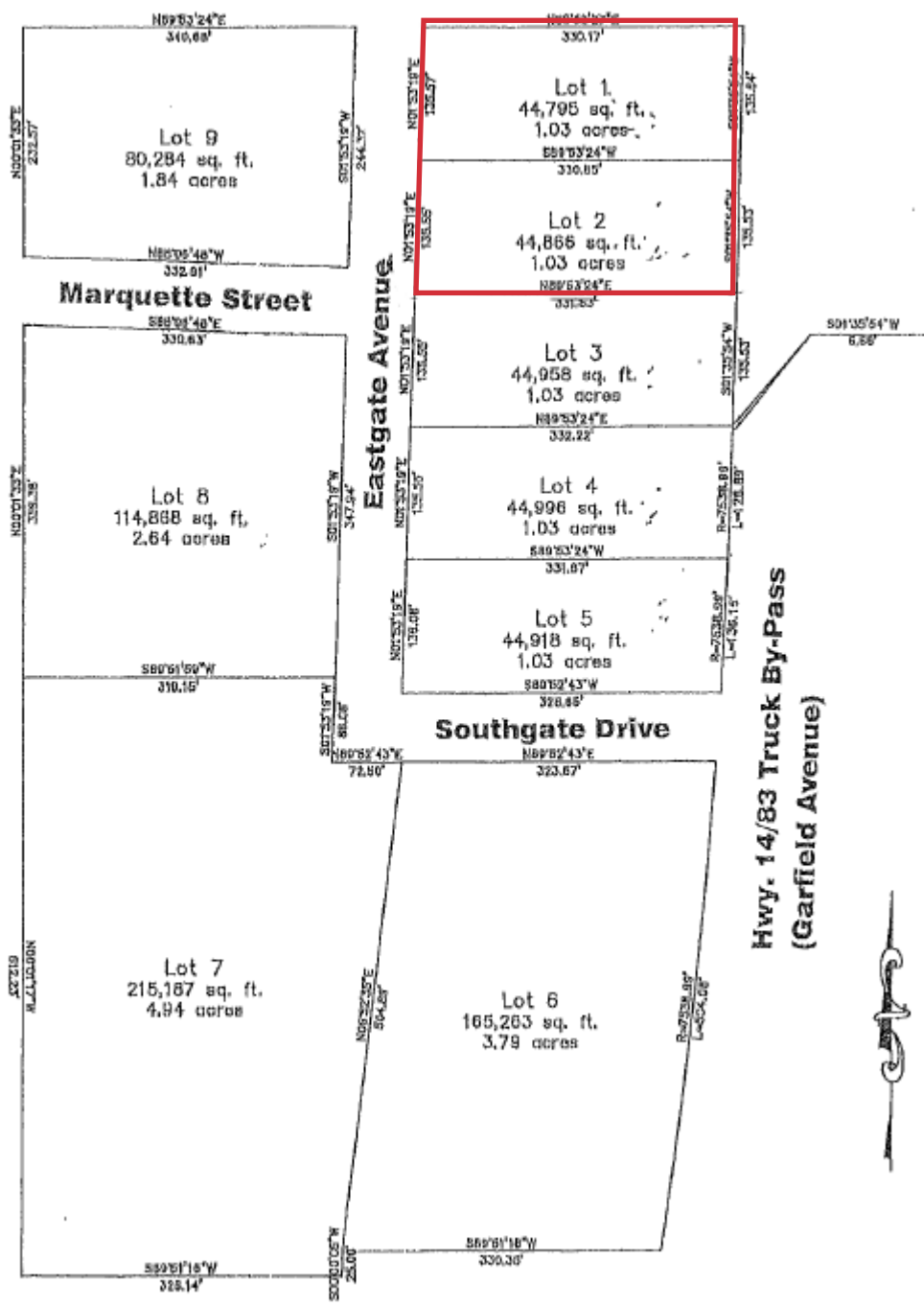
605 310 4227 • chagen@naisiouxfalls.com

NO WARRANTY OR REPRESENTATION, EXPRESS OR IMPLIED, IS MADE AS TO THE ACCURACY OF THE INFORMATION CONTAINED HEREIN, AND THE SAME IS SUBMITTED SUBJECT TO ERRORS, OMISSIONS, CHANGE OF PRICE, RENTAL OR OTHER CONDITIONS, PRIOR SALE, LEASE OR FINANCING, OR WITHDRAWAL WITHOUT NOTICE, AND OF ANY SPECIAL LISTING CONDITIONS IMPOSED BY OUR PRINCIPALS NO WARRANTIES OR REPRESENTATIONS ARE MADE AS TO THE CONDITION OF THE PROPERTY OR ANY HAZARDS CONTAINED THEREIN ARE ANY TO BE IMPLIED.

2500 W. 49th Street Suite 100
Sioux Falls, SD 57105
+1 605 357 7100

naisiouxfalls.com

FOR SALE



FOR SALE

