



Westtown Marketplace

2700 S Ellis Road, Sioux Falls, SD 57106

Property Features

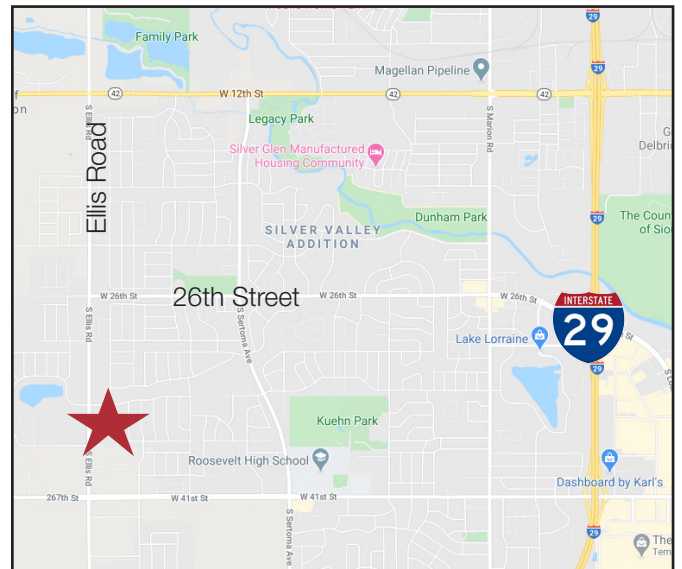
- Newly constructed
- Suite 1: 2,554 USF - LEASED
- Suite 2: 2,785 USF - LEASED
- Suite 3: 1,400 USF
- Suite 4: 1,765 USF
- Suite 5: 1,899 USF with drive thru
- New construction
- Plenty of parking
- Great westside location
- One or more owners is a licensed Real Estate Agent in SD

Pricing

- Lease rate: \$24.00 - \$27.00/ sq. ft. NNN

Location

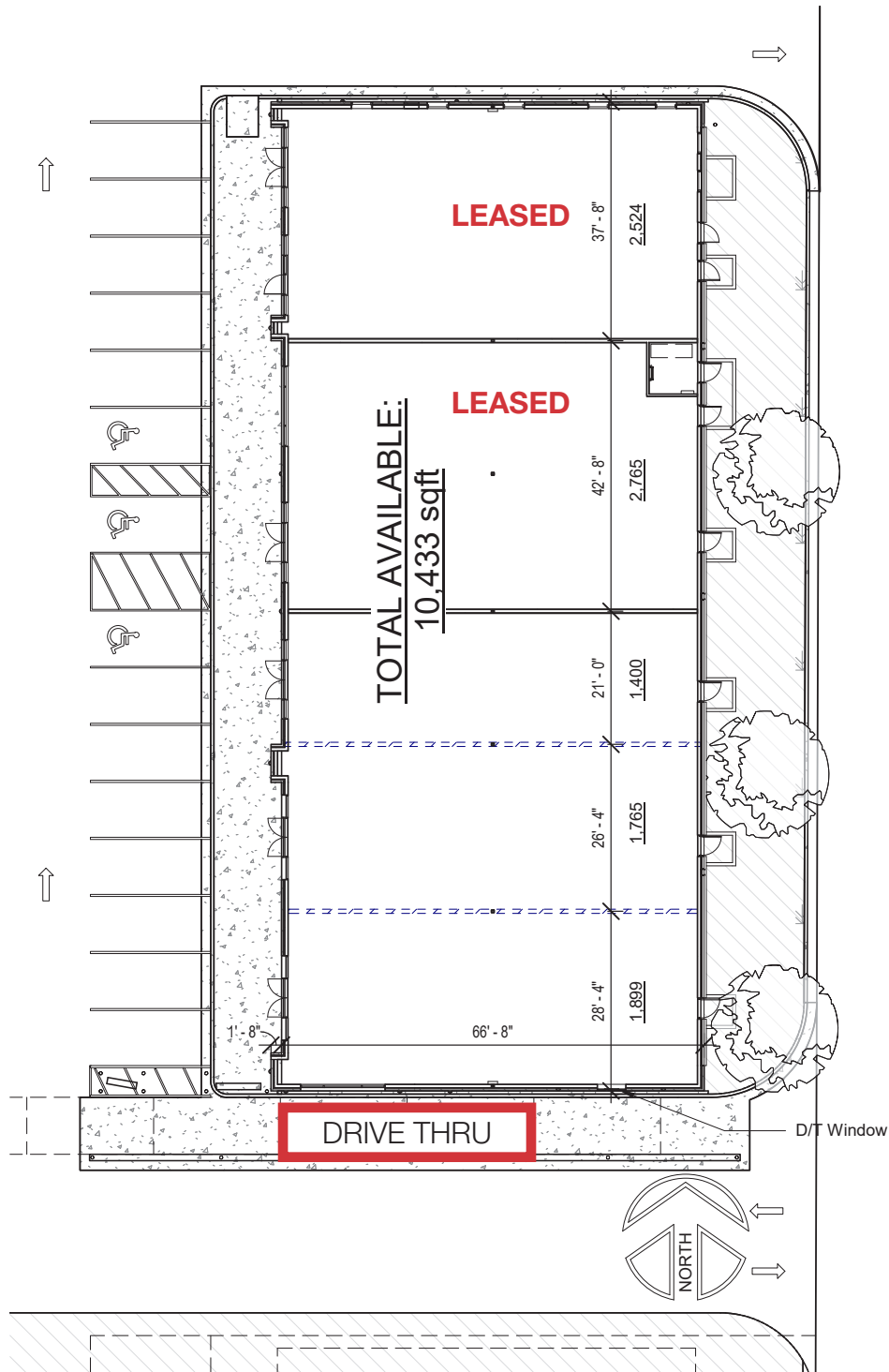
- Located near the corner of Lancaster & Ellis Road
- Area neighbors include: Sanford Wellness Center, Sanford Clinic, Lewis Fareway Grocery, Starbucks, Dollar Tree



Craig Hagen, CCIM, SIOR

605 310 4227 • chagen@naisiouxfalls.com

FOR LEASE



FOR LEASE

