



## 10th Street Office Sublease

3005 E. 10th Street, Sioux Falls, SD 57103

### Property Features

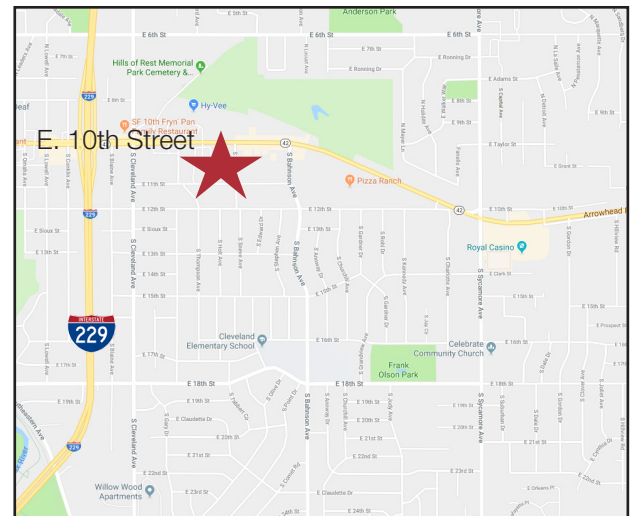
- 492 sq. ft. of office space for lease including one office and an open space with a desk
- Kitchenette
- In suite restroom
- Shared conference room
- Reception area
- Ample parking
- Furnished office
- Monument sign available
- Available May 1

### Pricing

- Lease rate: \$700/ month gross

### Location

- Located on E. 10th Street across from Hy-Vee
- Area neighbors include: Hy-Vee, Builder's Millwork, Eastway Bowl, Applebee's, Alpine Inn, Austad's, The Upper Cut

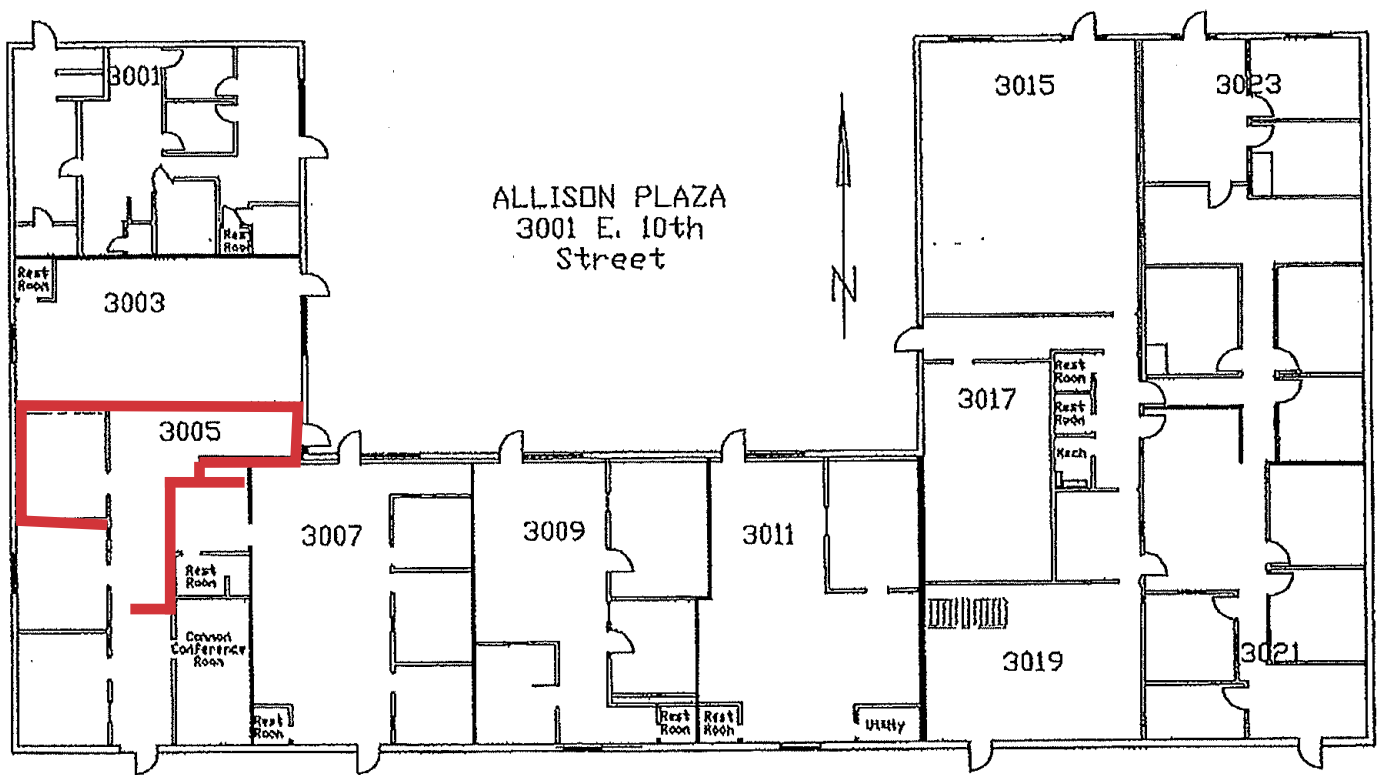


**Stacey Sieverding**  
605 728 1390 mobile  
ssieverding@naisiouxfalls.com



For Lease  
**Office Space**







For Lease  
Office Space

