



Park Place Center, Suite 202

3101 W. 41st Street, Sioux Falls, SD 57105

Property Features

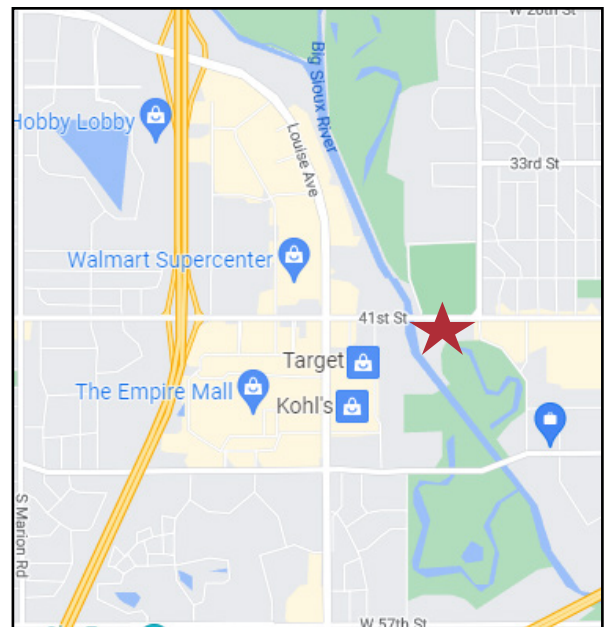
- Common area coffee bar and restrooms
- Shared conference room
- Twenty-four hour access
- On-site parking spaces
- Suite 202: 1,024 sq. ft.
 - Three window office with reception and open space
- Available September 1, 2022

Price

- Suite 202: \$1,595/ month gross

Location

- Located in Park Place Center on 41st Street
- Area neighbors include: Stensland Family Farms Ice Cream, Fuddruckers, Plato's Closet, O'Gorman High School



For more information:

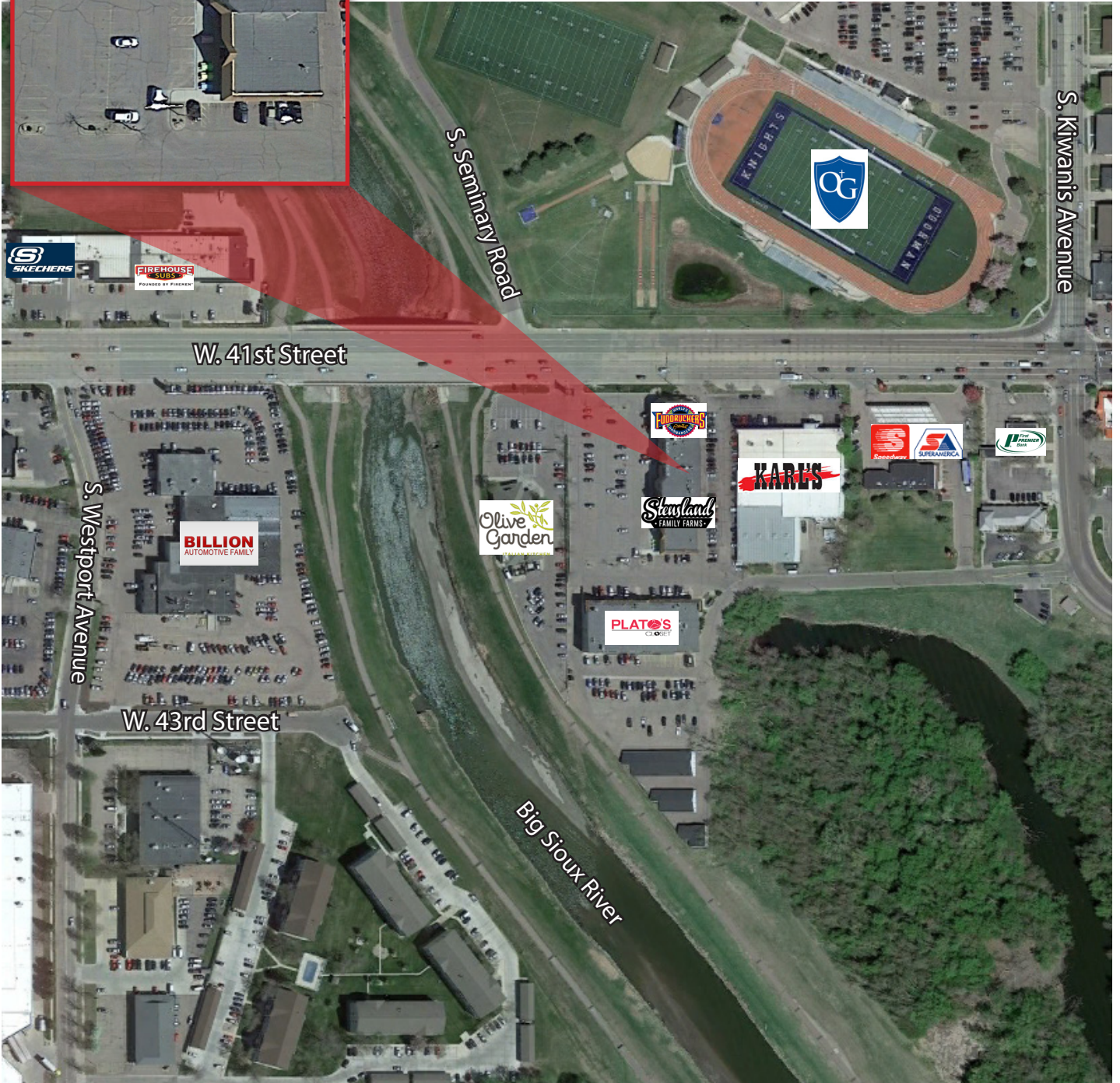
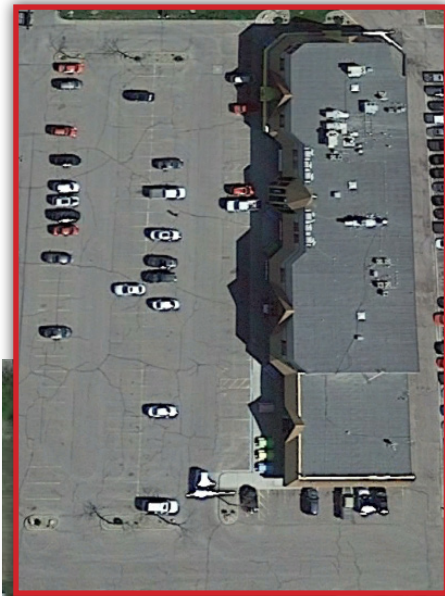
Stacey Sieverding

+1 605 728 1390 • ssieverding@naisiouxfalls.com

For Lease
Office Suite



For Lease
Office Suite



NA Sioux Falls

2500 W. 49th Street Suite 100
Sioux Falls, SD 57105
+1 605 357 7100
naisiouxfalls.com