



111-113 W. 39th Street
Sioux Falls, SD 57105

Property Features

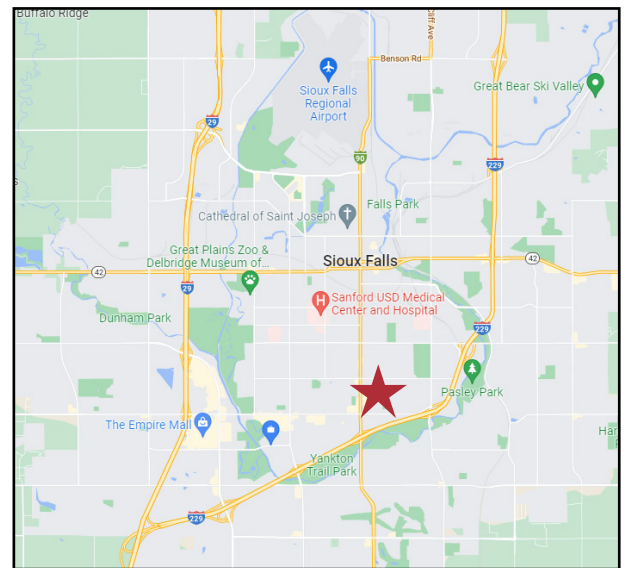
- Building size: 1,922 sq. ft.
- Includes 3 windowed offices, break room, reception/waiting area, bathroom, and 3 storage rooms
- Lot size: 0.27 acres (11,616 sq. ft.)
- Year built: 1971
- Roof was replaced in 2015
- New air conditioner in 2016
- Painted and wood laminate installed in 2020
- Paved parking lot with 10 spaces
- Zoning: Office

Pricing

- Sale Price: \$429,500
- 2021 Real Estate taxes: \$5,342.40

Location

- Located just east of Minnesota Avenue on 39th Street
- Area neighbors include Hy-Vee, GreatLIFE, ABC Rentals, McDonald's, Nyberg's Ace, Billion Auto, Lewis Drug



For more information:

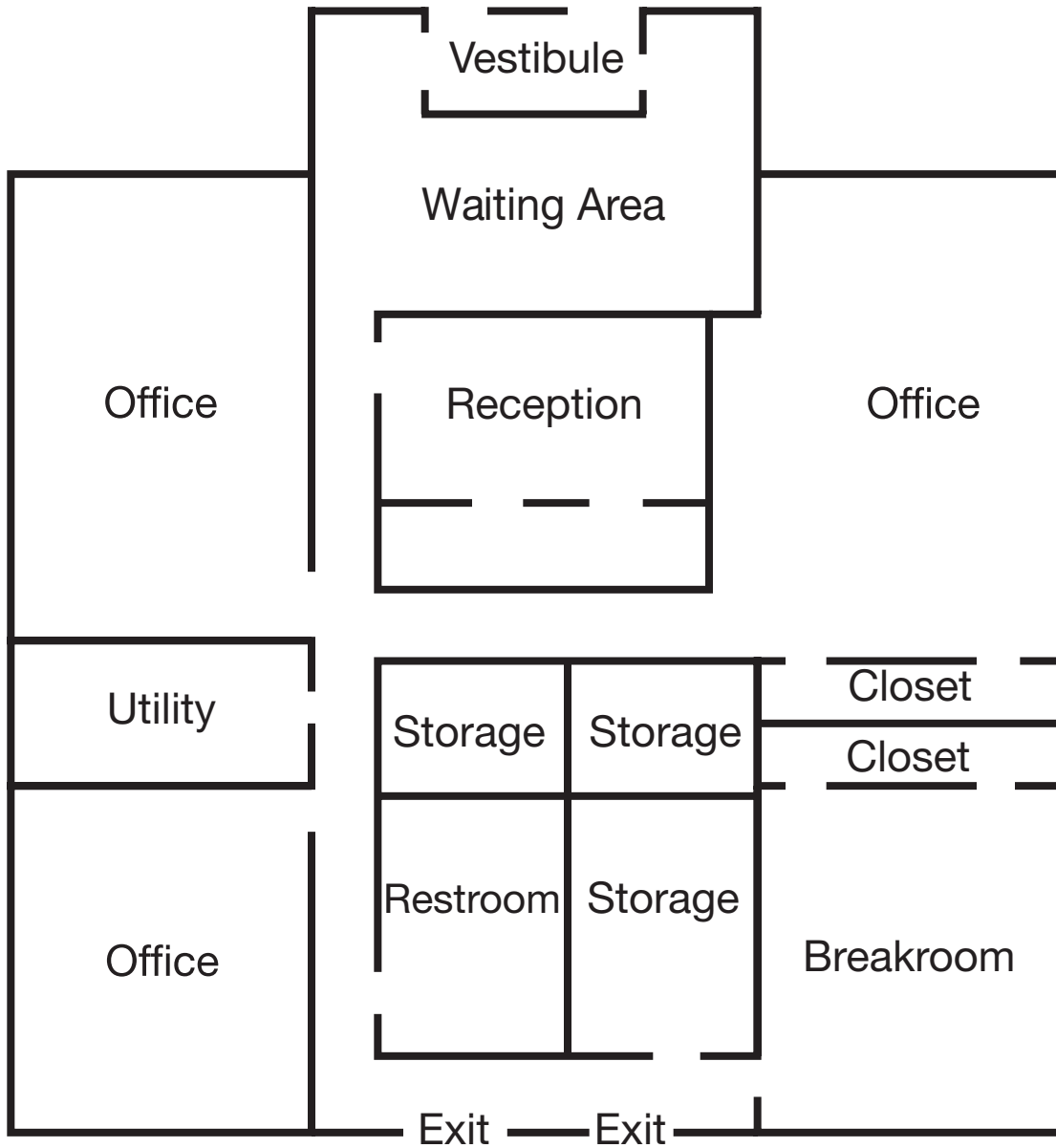
Stacey Sieverding

605 728 1390 • ssieverding@naisiouxfalls.com

NAI Sioux Falls

FLOOR PLAN

For Lease
Office Space



PHOTOS

For Lease
Office Space



PHOTOS

For Lease
Office Space



AERIAL

For Lease
Office Space

