



Brenner Pond Sublease

5000 S. Broadband Lane #119, Sioux Falls, SD 57108

Property Features

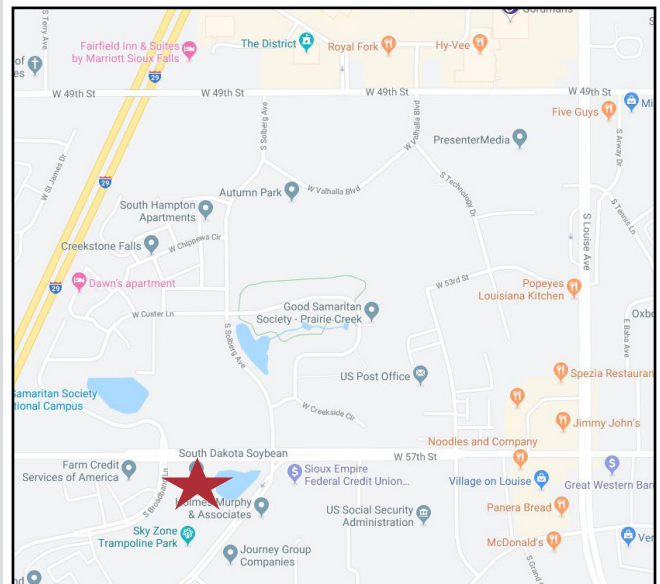
- Sublease expires 11/30/2023
- Suite size: 2,690 sq. ft.
- 8 offices, conference room with deck access, coffee bar, work room, and file room
- Partially furnished
- Large windows
- Garage parking
- Overlooks pond
- Monument signage

Pricing

- Lease rate: \$23.20/ sq. ft. gross plus utilities (\$5,200/mo)

Location

- Located west of the 57th and Louise Avenue intersection
- Area neighbors include: Bluestone FCU, Sammons Financial Group, South Dakota Soybean Association, Sky Zone, Good Samaritan Society, Bluepeak



For more information:



Gregg Brown, MBA, SIOR

605 906 0394 Cell

gbrown@naisiouxfalls.com

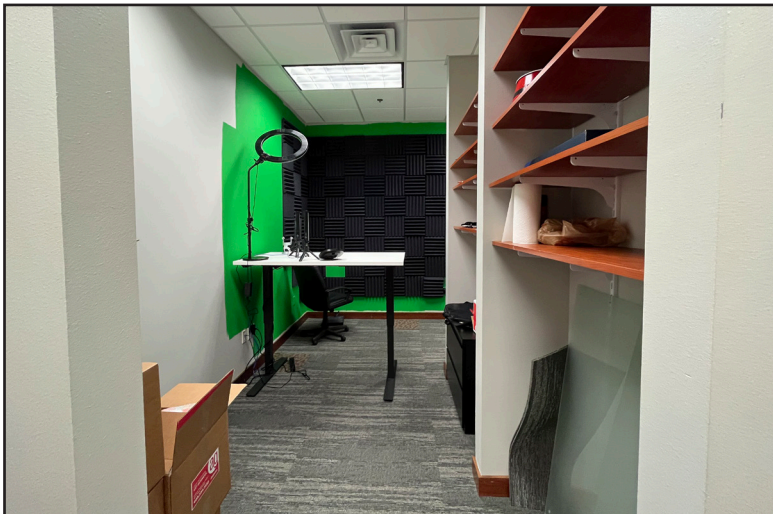
PHOTOS

For Sublease
Office Space



PHOTOS

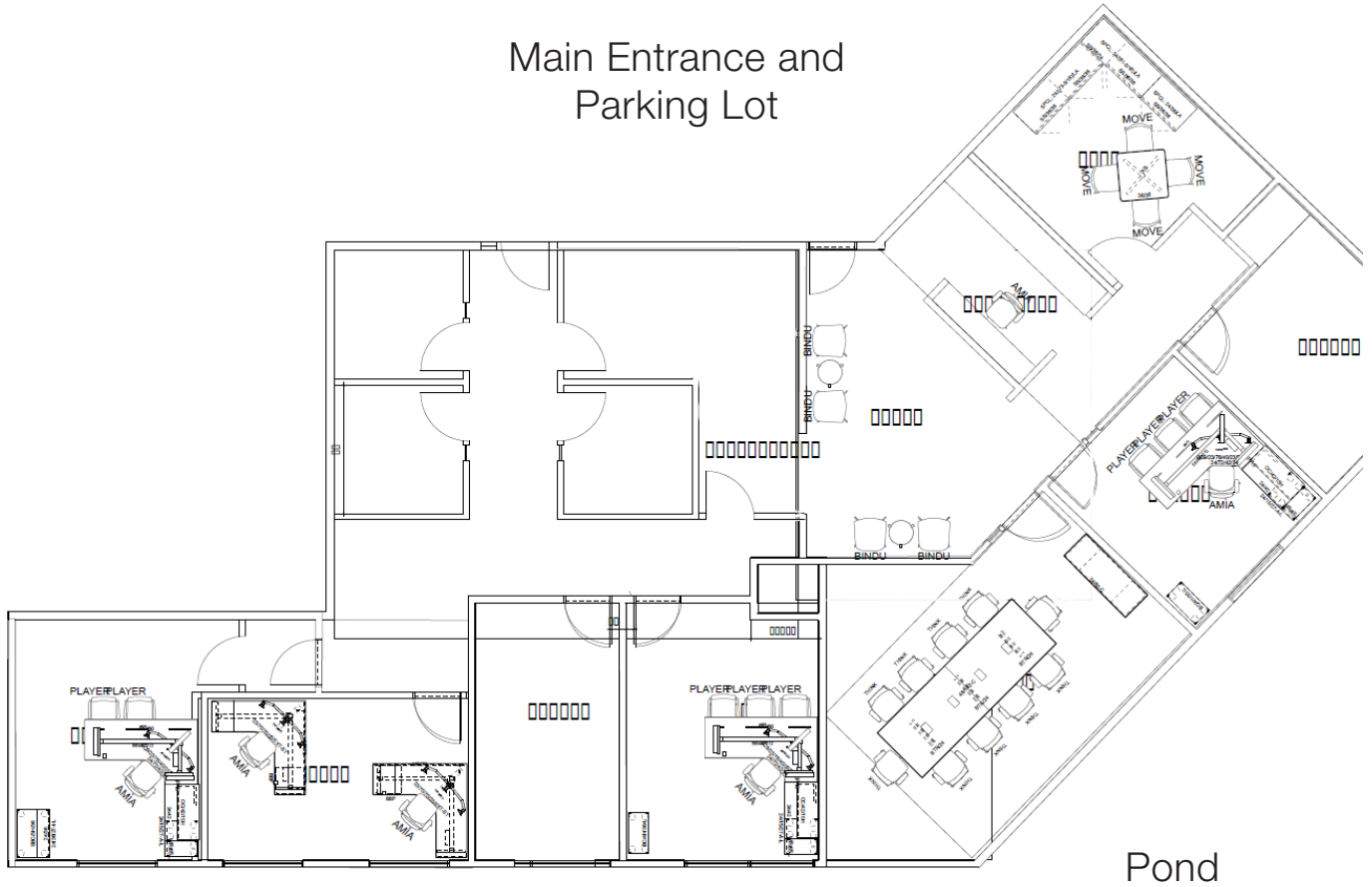
For Sublease
Office Space



FLOOR PLAN

For Sublease
Office Space

Main Entrance and
Parking Lot



Pond



AERIAL MAP

For Sublease
Office Space

