



408 W. Lotta Street

Sioux Falls, SD 57105

Property Features

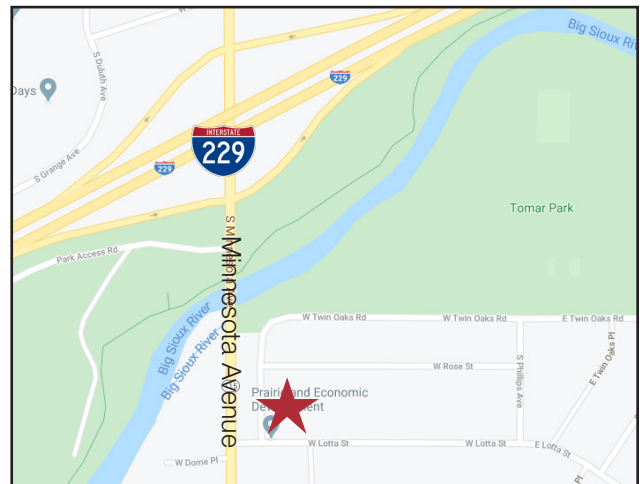
- Suite 2: 1,996 RSF
- Available within 30 days
- Conference room
- Two window offices
- Open area for cubicles
- Shared break room
- Monument signage available
- Paved, on-site parking

Pricing

- Suite 2: \$2,500/ month gross plus utilities

Location

- Located south of Tomar Park on W. Lotta
- Easy access to S. Minnesota and I-229
- Neighbors include Frisbee's Plumbing & Heating, Heritage Funeral Home & First National Bank



For more information:

Gregg Brown, MBA, SIOR

+1 605 906 0394 • gbrown@naisiouxfalls.com

Stacey Sieverding

+1 605 728 1390 • ssieverding@naisiouxfalls.com

NO WARRANTY OR REPRESENTATION, EXPRESS OR IMPLIED, IS MADE AS TO THE ACCURACY OF THE INFORMATION CONTAINED HEREIN, AND THE SAME IS SUBMITTED SUBJECT TO ERRORS, OMISSIONS, CHANGE OF PRICE, RENTAL OR OTHER CONDITIONS, PRIOR SALE, LEASE OR FINANCING, OR WITHDRAWAL WITHOUT NOTICE, AND OF ANY SPECIAL LISTING CONDITIONS IMPOSED BY OUR PRINCIPALS NO WARRANTIES OR REPRESENTATIONS ARE MADE AS TO THE CONDITION OF THE PROPERTY OR ANY HAZARDS CONTAINED THEREIN ARE ANY TO BE IMPLIED.

2500 W. 49th Street Suite 100
Sioux Falls, SD 57105
+1 605 357 7100
naisiouxfalls.com

FOR LEASE

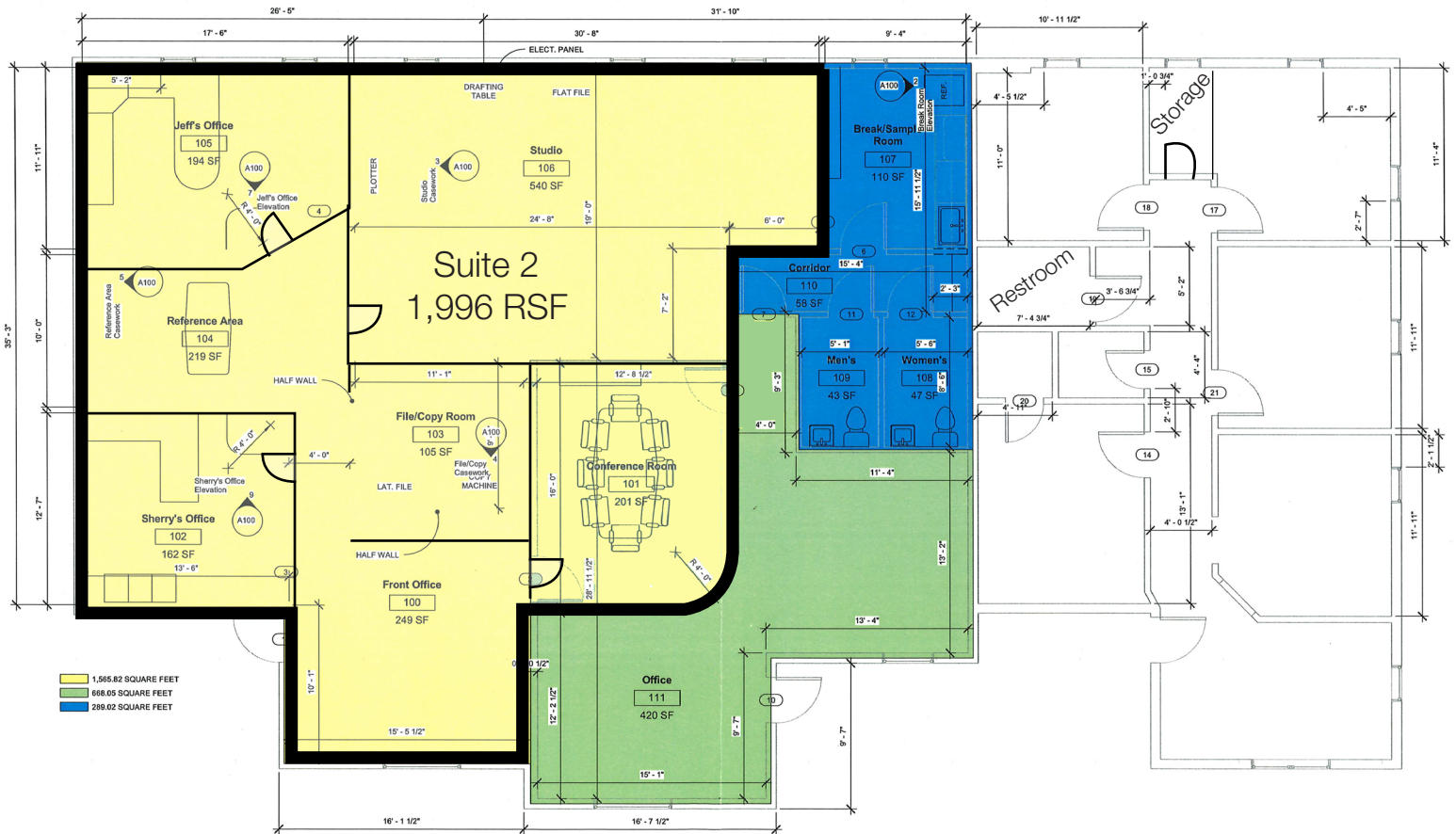
Suite 2



NASioux Falls

2500 W. 49th Street Suite 100
Sioux Falls, SD 57105
+1 605 357 7100
naisiouxfalls.com

FOR LEASE



Parking Lot



NAI Sioux Falls

2500 W. 49th Street Suite 100
 Sioux Falls, SD 57105
 +1 605 357 7100
naisiouxfalls.com

FOR LEASE



NA Sioux Falls

2500 W. 49th Street Suite 100
Sioux Falls, SD 57105
+1 605 357 7100
naisiouxfalls.com