

Industrial Building

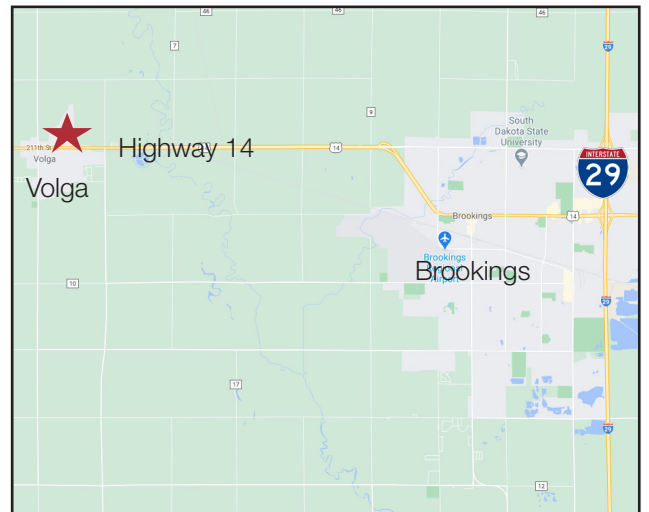


Volga Industrial Building

220 Industrial Drive, Volga, SD 57071

Property Features

- 10,500 SF total available for lease (Approx. 1,000 SF of office space)
- Lot size: 3 acres
- 16' sidewalls
- One Bath
- Three large overhead doors 14' tall
- Dock door and semi loading dock
- Internal divide wall with overhead and walk door
- In-floor natural gas system
- 3 Phase power
- Well graded lot with drain tile inlets
- Perfect for manufacturing, service/repair work, distribution or heated storage



Pricing

- Lease Rates: \$5.25/ sq. ft. gross plus utilities

Location

- Located in Volga, South Dakota, just 7 miles east of Brookings, SD along on Highway 14

For more information:

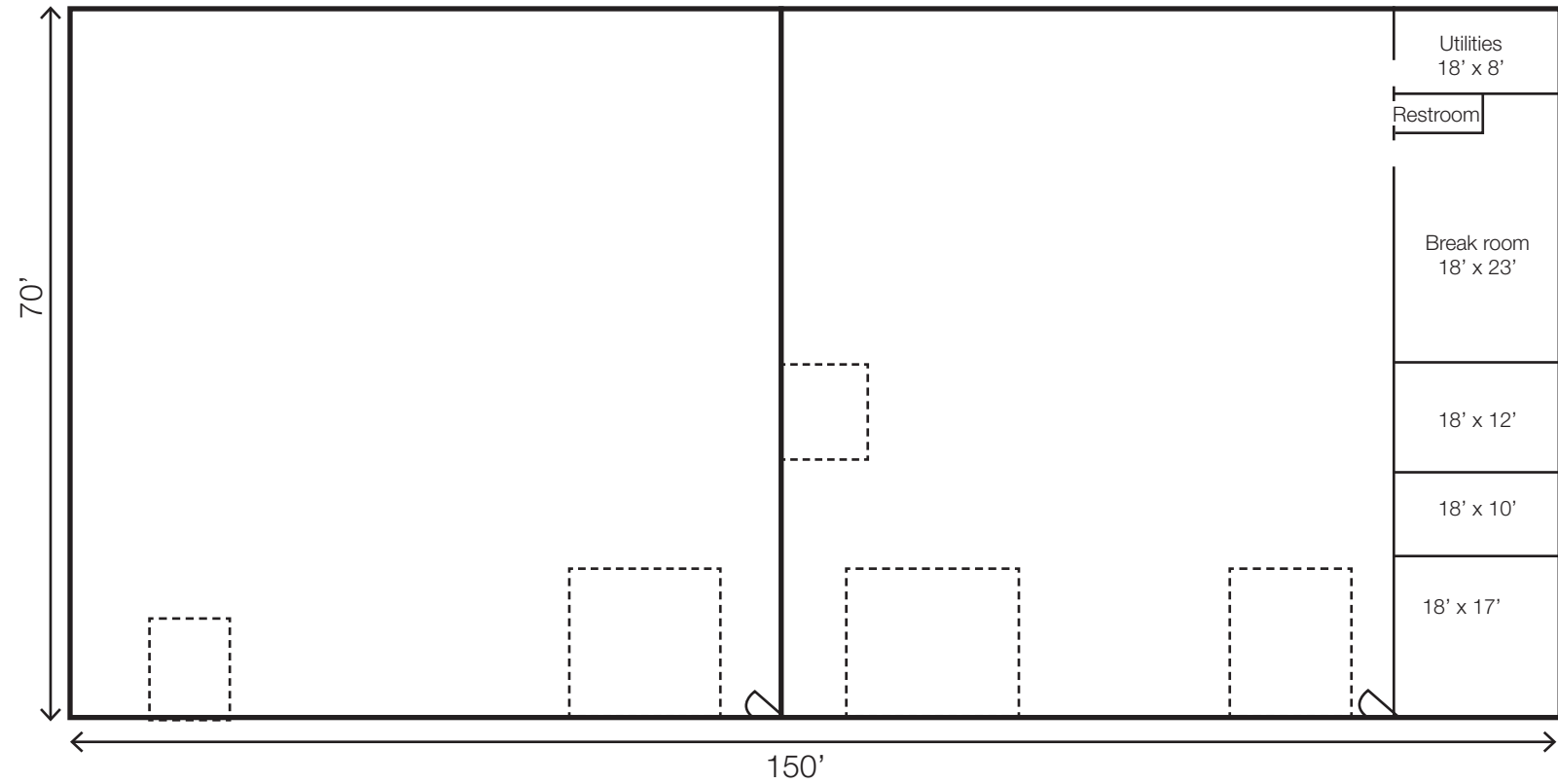
Marcus Mahlen, CCIM

+1 605 228 9744 • mmahlen@naisiouxfalls.com

Bill Connelly

+1 605 254 2360 • bconnelly@naisiouxfalls.com

FOR LEASE



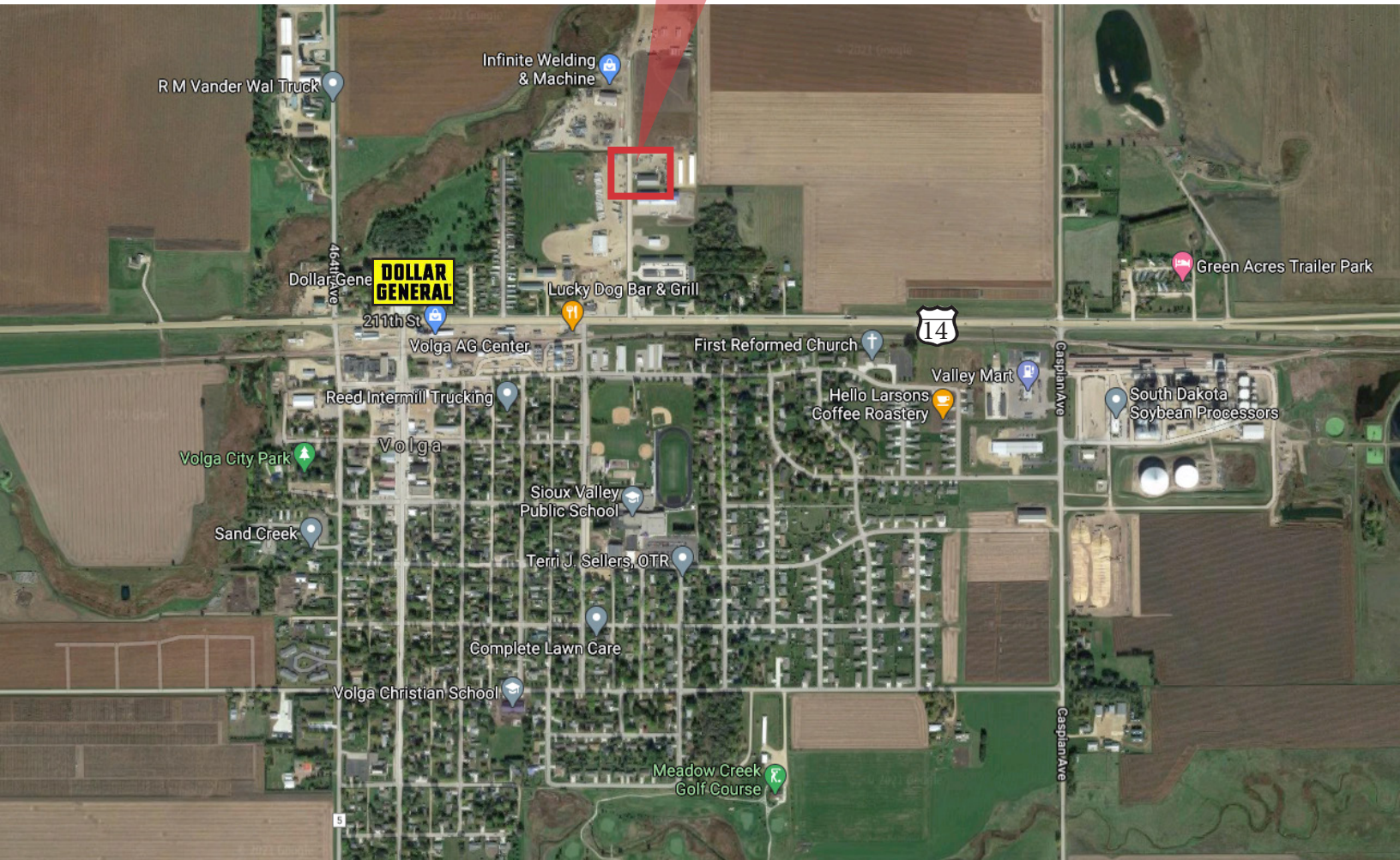
FOR LEASE



NAI Sioux Falls

2500 W. 49th Street Suite 100
Sioux Falls, SD 57105
+1 605 357 7100
naisiouxfalls.com

FOR LEASE



NAI Sioux Falls

2500 W. 49th Street Suite 100
Sioux Falls, SD 57105
+1 605 357 7100
naisiouxfalls.com