



Garretson 8-Plex

812 Canyon Avenue, Garretson, SD 57030

Property Features

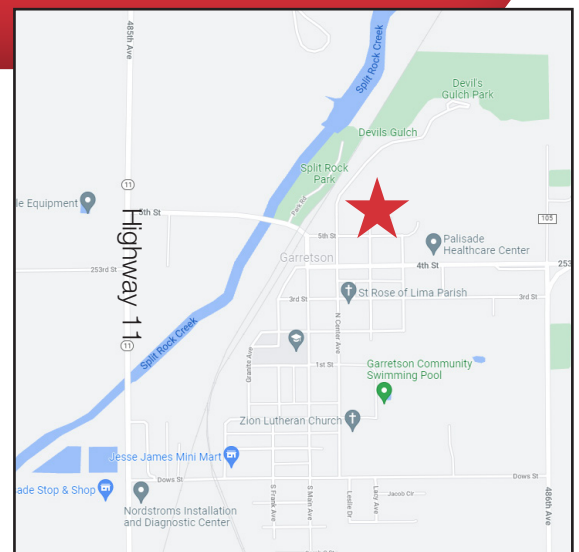
- 8 units
 - One - 1 bedroom unit
 - Seven - 2 bedroom units
- Building: 3,198 main level/ 3,198 lower level
- Lot size: +/-13,438 sq. ft.
- Year built: 1976
- Storage shed included
- Fully occupied
- 6.92% cap rate
- 37.7% expense ratio

Pricing

- List price: \$525,000
- 2020 Real Estate Taxes: \$4,780.34

Location

- Located on the north side of Garretson, SD, home to the historic Devil's Gulch and just down the road from Palisades State Park
- Garretson is 20 northeast of Sioux Falls



Michael Martin, CCIM
Senior Vice President

605 261 2777 • mmartin@naisiouxfalls.com

NO WARRANTY OR REPRESENTATION, EXPRESS OR IMPLIED, IS MADE AS TO THE ACCURACY OF THE INFORMATION CONTAINED HEREIN, AND THE SAME IS SUBMITTED SUBJECT TO ERRORS, OMISSIONS, CHANGE OF PRICE, RENTAL OR OTHER CONDITIONS, PRIOR SALE, LEASE OR FINANCING, OR WITHDRAWAL WITHOUT NOTICE, AND OF ANY SPECIAL LISTING CONDITIONS IMPOSED BY OUR PRINCIPALS NO WARRANTIES OR REPRESENTATIONS ARE MADE AS TO THE CONDITION OF THE PROPERTY OR ANY HAZARDS CONTAINED THEREIN ARE ANY TO BE IMPLIED.

2500 W. 49th Street Suite 100
Sioux Falls, SD 57105
+1 605 357 7100
naisiouxfalls.com

FOR SALE



FOR SALE



